

## PD-1 (ABT-PD1) IHC kit

CatalogNo: IHCM6208

### Key Features

#### Host Species

- Mouse

#### Reactivity

- Human,

#### Applications

- IHC

#### Isotype

- IgG1,Kappa

### Recommended Dilution Ratios

### Storage

**Storage\*** 2°C to 8°C/1 year

### Basic Information

**Clonality** Monoclonal

**Clone Number** ABT-PD1

### Immunogen Information

**Immunogen** Synthesized peptide derived from human PD-1 AA range: 1-100

**Specificity** The antibody can specifically recognize human PD-1 protein.

### Target Information

**Gene name** PDCD1 PD1

**Protein Name** Programmed cell death protein 1 (Protein PD-1) (hPD-1) (CD antigen CD279)

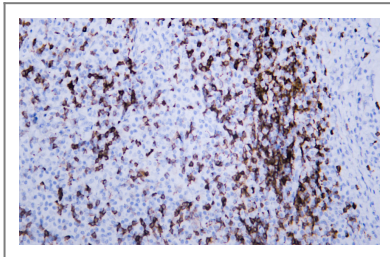
Organism	Gene ID	UniProt ID
Human	<a href="#">5133;</a>	<a href="#">Q15116;</a>

**Cellular Localization** Membranous, Cytoplasmic

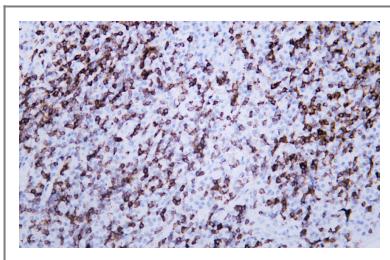
**Tissue specificity** Placenta,Pooled tissue,Uterine cervix,

**Function** developmental stage:Induced at programmed cell death.,Disease:Genetic variation in PDCD1 is associated with susceptibility to systemic lupus erythematosus type 2 (SLEB2) [MIM:605218]. Systemic lupus erythematosus is a chronic, inflammatory and often febrile multisystemic disorder of connective tissue. It affects principally the skin, joints, kidneys and serosal membranes. It is thought to represent a failure of the regulatory mechanisms of the autoimmune system.,Function:Possible cell death inducer, in association with other factors.,similarity:Contains 1 Ig-like V-type (immunoglobulin-like) domain.,subunit:Monomer.,

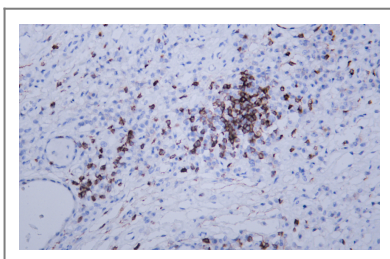
## Validation Data



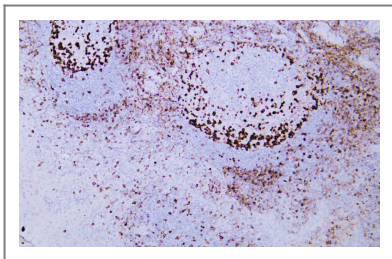
Human lymphoma tissue was stained with Anti-PD-1 (ABT-PD1) Antibody



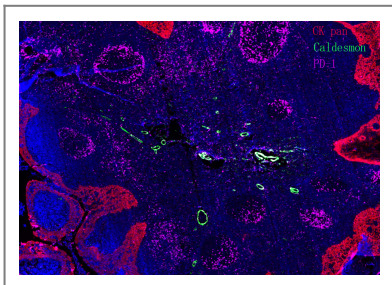
Human lymphoma tissue was stained with Anti-PD-1 (ABT-PD1) Antibody



Human lymphoma tissue was stained with Anti-PD-1 (ABT-PD1) Antibody



Human tonsil tissue was stained with Anti-PD-1 (ABT-PD1) Antibody



Fluorescence multiplex immunohistochemical analysis of normal human appendix tissue (formalin-fixed paraffin-embedded section).The section was incubated in 3 rounds of staining; in the order of CK PAN .( Catalog no:YM6815 1/200 dilution), PD-1.(Catalog no: YM6208 1/200 dilution), Caldesmon pan. (Catalog no:YM6826 1/200 dilution),each using a separate fluorescent tyramide signal amplification system : Treble-Fluorescence immunohistochemical mouse/rabbit kit Catalog NO: RS0035 (pH9.0)

## Contact information

Orders: [order@immunoway.com](mailto:order@immunoway.com)  
Support: [tech@immunoway.com](mailto:tech@immunoway.com)  
Telephone: 408-747-0189 (USA) 400-8787-807(China)  
Website: <http://www.immunoway.com>  
Address: 2200 Ringwood Ave San Jose, CA 95131 USA



Please scan the QR code to access additional product information:  
**PD-1 (ABT-PD1) IHC kit**

For Research Use Only. Not for Use in Diagnostic Procedures.

[Antibody](#) | [ELISA Kits](#) | [Protein](#) | [Reagents](#)