

## Mast cell tryptase (ABT-MCT) IHC kit

CatalogNo: IHCM6194

### Key Features

#### Host Species

- Mouse

#### Reactivity

- Human,

#### Applications

- IHC

#### Isotype

- IgG1,Kappa

### Recommended Dilution Ratios

### Storage

**Storage\*** 2°C to 8°C/1 year

### Basic Information

**Clonality** Monoclonal

**Clone Number** ABT-MCT

### Immunogen Information

**Immunogen** Synthesized peptide derived from human Mast cell tryptase AA range: 200-275

**Specificity** The antibody can specifically recognize human Mast cell tryptase protein.

### Target Information

**Gene name** TPSAB1 TPS1 TPS2 TPSB1

**Protein Name** Tryptase alpha/beta-1 (Tryptase-1) (Tryptase I) (Tryptase alpha-1)

**Organism**

**Gene ID**

**UniProt ID**

Human

[7177](#);

[Q15661](#);

**Cellular Localization**

Cytoplasmic

**Tissue specificity**

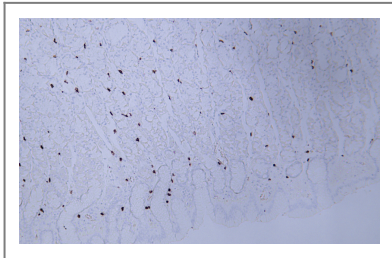
Isoform 1 and isoform 2 are expressed in lung, stomach, spleen, heart and skin; in these tissues, isoform 1 is predominant. Isoform 2 is expressed in aorta, spleen, and breast tumor, with highest levels in the endothelial cells of some blood vessels surrounding the aorta, as well as those surrounding the tumor and low levels, if any, in mast cells (at protein level).

**Function**

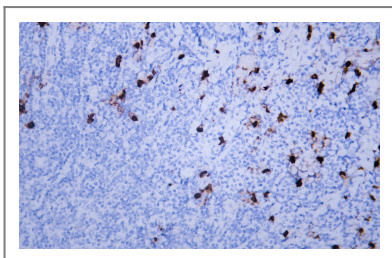
Catalytic activity:Preferential cleavage: Arg-|-Xaa, Lys-|-Xaa, but with more restricted specificity than trypsin.,Function:Tryptase is the major neutral protease present in mast cells and is secreted upon the coupled activation-degranulation response of this cell type.,Function:Tryptase is the major neutral protease present in mast cells and is secreted upon the coupled activation-degranulation response of this cell type. Has an immunoprotective role during bacterial infection. Required to efficiently combat K.pneumoniae infection.,polymorphism:There are two alleles; beta-II and beta-III which differ by 3 residues.,similarity:Belongs to the peptidase S1 family.,similarity:Belongs to the peptidase S1 family. Tryptase subfamily.,similarity:Contains 1 peptidase S1 domain.,subcellular location:Released from the secretory granules upon mast cell activation.,subunit:Homotetramer.,

---

## Validation Data



Human stomach tissue was stained with Anti-Mast Cell Tryptase (ABT-MCT) Antibody



Human tonsil tissue was stained with Anti-Mast Cell Tryptase (ABT-MCT) Antibody

## Contact information

Orders: order@immunoway.com  
Support: tech@immunoway.com  
Telephone: 408-747-0189 (USA) 400-8787-807(China)  
Website: http://www.immunoway.com  
Address: 2200 Ringwood Ave San Jose, CA 95131 USA



Please scan the QR code  
to access additional  
product information:  
**Mast cell tryptase  
(ABT-MCT) IHC kit**

---

For Research Use Only. Not for Use in Diagnostic Procedures.

[Antibody](#) | [ELISA Kits](#) | [Protein](#) | [Reagents](#)