

KSP-Cadherin (PT0160) IHC kit

CatalogNo: IHCM6192

Key Features

Host Species

- Mouse

Reactivity

- Human,

Applications

- IHC

Isotype

- IgG1,Kappa

Recommended Dilution Ratios

Storage

Storage* 2°C to 8°C/1 year

Basic Information

Clonality Monoclonal

Clone Number PT0160

Immunogen Information

Immunogen Synthesized peptide derived from human KSP-Cadherin AA range: 700-829

Specificity The antibody can specifically recognize human KSP-Cadherin protein, and has no cross reaction with E-cadherin, N-cadherin, P-cadherin.

Target Information

Gene name CDH16 UNQ695/PRO1340

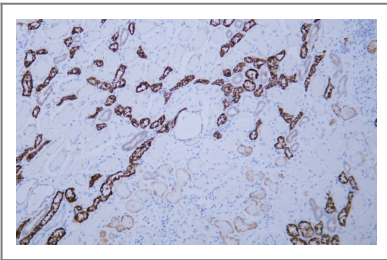
Protein Name	KSP-Cadherin		
	Organism	Gene ID	UniProt ID
	Human	1014;	O75309;

Cellular Localization Cytoplasmic, Membranous

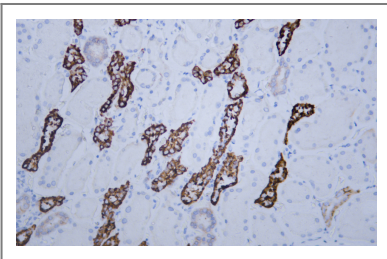
Tissue specificity Kidney specific.

Function Function: Cadherins are calcium dependent cell adhesion proteins. They preferentially interact with themselves in a homophilic manner in connecting cells; cadherins may thus contribute to the sorting of heterogeneous cell types., similarity: Contains 6 cadherin domains., tissue specificity: Kidney specific.,

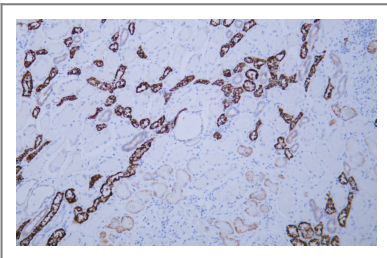
Validation Data



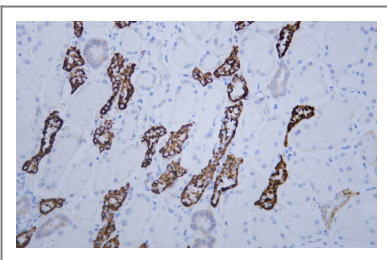
Human kidney tissue was stained with anti-KSP-Cadherin (PT0160) Antibody



Human kidney tissue was stained with anti-KSP-Cadherin (PT0160) Antibody



Human kidney tissue was stained with anti-KSP-Cadherin (PT0160) Antibody



Human kidney tissue was stained with anti-KSP-Cadherin (PT0160) Antibody

| Contact information

Orders: order@immunoway.com
Support: tech@immunoway.com
Telephone: 408-747-0189 (USA) 400-8787-807(China)
Website: <http://www.immunoway.com>
Address: 2200 Ringwood Ave San Jose, CA 95131 USA



Please scan the QR code to access additional product information:
KSP-Cadherin (PT0160) IHC kit

For Research Use Only. Not for Use in Diagnostic Procedures.

[Antibody](#) | [ELISA Kits](#) | [Protein](#) | [Reagents](#)