

Insulin (PT0156) IHC kit

CatalogNo: IHCM6191

Key Features

Host Species

- Mouse

Reactivity

- Human,Mouse,Rat,

Applications

- IHC

Isotype

- IgG2a,Kappa

Recommended Dilution Ratios

Storage

Storage* 2°C to 8°C/1 year

Basic Information

Clonality Monoclonal

Clone Number PT0156

Immunogen Information

Immunogen Synthesized peptide derived from human Insulin AA range: 25-110

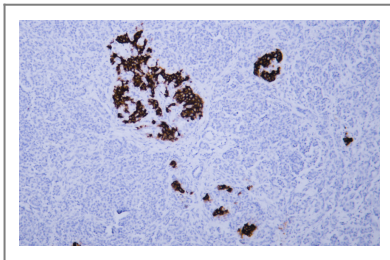
Specificity The antibody can specifically recognize human Insulin protein.

Target Information

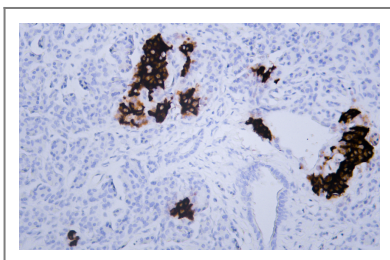
Gene name INS

Protein Name	Insulin						
	<table border="1"> <thead> <tr> <th>Organism</th> <th>Gene ID</th> <th>UniProt ID</th> </tr> </thead> <tbody> <tr> <td>Human</td> <td>3630;</td> <td>P01308;</td> </tr> </tbody> </table>	Organism	Gene ID	UniProt ID	Human	3630;	P01308;
Organism	Gene ID	UniProt ID					
Human	3630;	P01308;					
Cellular Localization	Cytoplasmic						
Tissue specificity	Cytoplasmic						
Function	<p>Disease:Defects in INS are the cause of familial hyperproinsulinemia [MIM:176730].,Function:Insulin decreases blood glucose concentration. It increases cell permeability to monosaccharides, amino acids and fatty acids. It accelerates glycolysis, the pentose phosphate cycle, and glycogen synthesis in liver.,Function:Preptin undergoes glucose-mediated co-secretion with insulin, and acts as physiological amplifier of glucose-mediated insulin secretion. Exhibits osteogenic properties by increasing osteoblast mitogenic activity through phosphoactivation of MAPK1 and MAPK3.,Function:The insulin-like growth factors possess growth-promoting activity. In vitro, they are potent mitogens for cultured cells. IGF-II is influenced by placental lactogen and may play a role in fetal development.,mass spectrometry: PubMed:12586351; PubMed:15359740,online information:Clinical information on Eli Lilly insulin products,online information:Insulin entry,online information:Insulin-like growth factor 2 entry,online information:Protein of the 20th century - Issue 9 of April 2001,pharmaceutical:Available under the names Humulin or Humalog (Eli Lilly) and Novolin (Novo Nordisk). Used in the treatment of diabetes. Humalog is an insulin analog with 52-Lys-Pro-53 instead of 52-Pro-Lys-53.,similarity:Belongs to the insulin family.,subunit:Heterodimer of a B chain and an A chain linked by two disulfide bonds.,</p>						

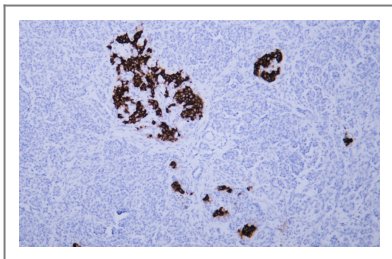
Validation Data



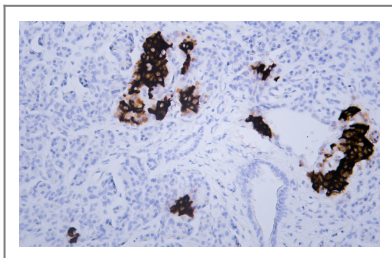
Human pancreas tissue was stained with anti-Insulin (PT0156) Antibody



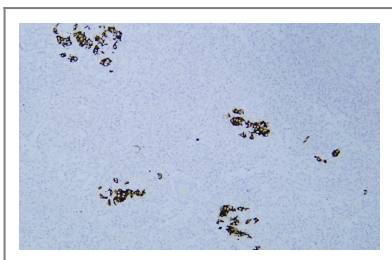
Human pancreas tissue was stained with anti-Insulin (PT0156) Antibody



Human pancreas tissue was stained with anti-Insulin (PT0156) Antibody



Human pancreas tissue was stained with anti-Insulin (PT0156) Antibody



Human pancreas tissue was stained with Anti-Insulin (PT0156) Antibody

| Contact information

Orders: order@immunoway.com
Support: tech@immunoway.com
Telephone: 408-747-0189 (USA) 400-8787-807(China)
Website: <http://www.immunoway.com>
Address: 2200 Ringwood Ave San Jose, CA 95131 USA



Please scan the QR code to access additional product information:
Insulin (PT0156) IHC kit

For Research Use Only. Not for Use in Diagnostic Procedures.

[Antibody](#) | [ELISA Kits](#) | [Protein](#) | [Reagents](#)