

Claudin 7 (ABT443) IHC kit

CatalogNo: IHCM6188

Key Features

Host Species

- Mouse

Reactivity

- Human,

Applications

- IHC

Isotype

- IgG2b,Kappa

Recommended Dilution Ratios

Storage

Storage* 2°C to 8°C/1 year

Basic Information

Clonality Monoclonal

Clone Number ABT443

Immunogen Information

Immunogen Synthesized peptide derived from human Claudin 7 AA range: 100-211

Specificity The antibody can specifically recognize human Claudin 7 protein.

Target Information

Gene name CLDN7 CEPTRL2 CPETRL2

Protein Name CEPTR L2;CEPTRL 2;CEPTRL2;Claudin 1;Claudin 7;Claudin 9;Claudin-7;Claudin1;Claudin7;Claudin9;CLD7_HUMAN;CLDN 7;CLDN-7;CLDN7;Clostridium perfringens enterotoxin receptor like 2;CPETR L2;CPETRL 2;CPETRL2;Hs.84359

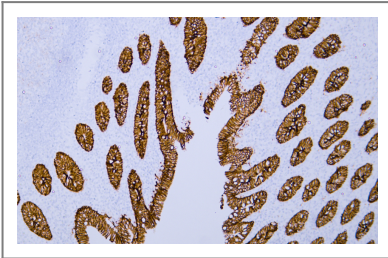
Organism	Gene ID	UniProt ID
Human	1366;	O95471;
Mouse		Q9Z261;
Rat		Q9Z1L1;

Cellular Localization Membranous

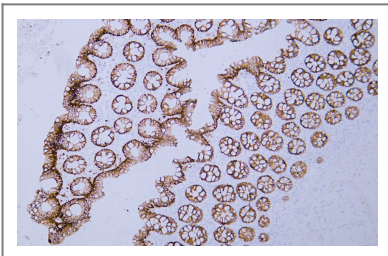
Tissue specificity kindey

Function Function:Plays a major role in tight junction-specific obliteration of the intercellular space.,induction:By androgens.,similarity:Belongs to the claudin family.,subunit:Directly interacts with TJP1/ZO-1, TJP2/ZO-2 and TJP3/ZO-3.,tissue specificity:Expressed in kidney, lung and prostate. Isoform 1 seems to be predominant, except in some normal prostate samples, where isoform 2 is the major form. Down-regulated in breast cancers, including ductal carcinoma in situ (DCIS), lobular carcinoma in situ (LCIS) and invasive ductal carcinoma (IDC) (at protein level), as well as in several cancer cell lines. Loss of expression correlates with histological grade, occurring predominantly in high-grade lesions.,

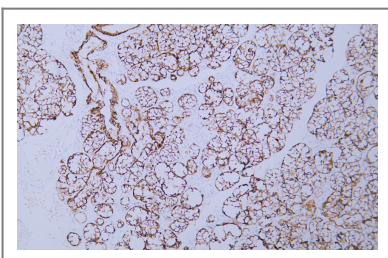
Validation Data



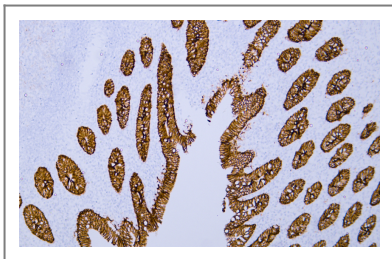
Human appendix tissue was stained with Anti-Claudin 7 (ABT443) Antibody



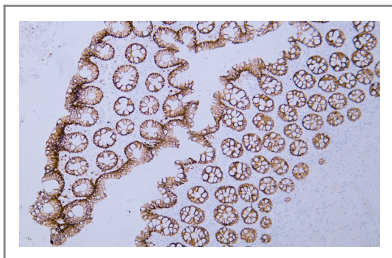
Human colon tissue was stained with Anti-Claudin 7 (ABT443) Antibody



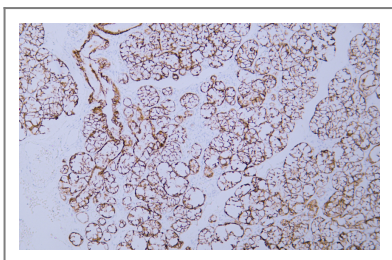
Human salivary gland tissue was stained with Anti-Claudin 7 (ABT443) Antibody



Human appendix tissue was stained with Anti-Claudin 7 (ABT443) Antibody



Human colon tissue was stained with Anti-Claudin 7 (ABT443) Antibody



Human salivary gland tissue was stained with Anti-Claudin 7 (ABT443) Antibody

Contact information

Orders: order@immunoway.com
Support: tech@immunoway.com
Telephone: 408-747-0189 (USA) 400-8787-807(China)
Website: <http://www.immunoway.com>
Address: 2200 Ringwood Ave San Jose, CA 95131 USA



Please scan the QR code to access additional product information:
Claudin 7 (ABT443) IHC kit

For Research Use Only. Not for Use in Diagnostic Procedures.

[Antibody](#) | [ELISA Kits](#) | [Protein](#) | [Reagents](#)