

## Claudin 18 (ABT158) IHC kit

CatalogNo: IHCM6183

### Key Features

#### Host Species

- Mouse

#### Reactivity

- Human,

#### Applications

- IHC

#### Isotype

- IgG1,Kappa

### Recommended Dilution Ratios

### Storage

**Storage\*** 2°C to 8°C/1 year

### Basic Information

**Clonality** Monoclonal

**Clone Number** ABT158

### Immunogen Information

**Immunogen** Synthesized peptide derived from human Claudin 18 AA range: 150-261

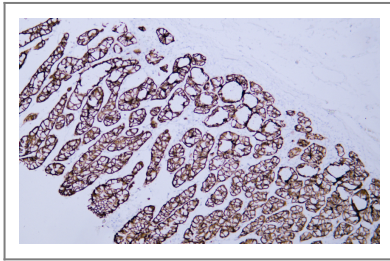
**Specificity** The antibody can specifically recognize both human Claudin 18.1 and Claudin 18.2 protein.

### Target Information

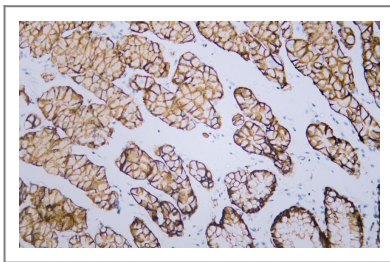
**Gene name** CLDN18 UNQ778/PRO1572

<b>Protein Name</b>	Claudin 18		
	<b>Organism</b>	<b>Gene ID</b>	<b>UniProt ID</b>
	Human	<a href="#">51208</a> ;	<a href="#">P56856</a> ;
<b>Cellular Localization</b>	Membranous		
<b>Tissue specificity</b>	Isoform A1: Expression is restricted to the lung (PubMed:19047087). Isoform A2: Expression is restricted to the stomach mucosa where it is predominantly observed in the epithelial cells of the pit region and the base of the gastric glands including exocrine and endocrine cells (at protein level) (PubMed:19047087).		
<b>Function</b>	Function:Plays a major role in tight junction-specific obliteration of the intercellular space, through calcium-independent cell-adhesion activity.,similarity:Belongs to the claudin family.,tissue specificity:Concentrated at the cell-cell borders of epithelial cells.,		

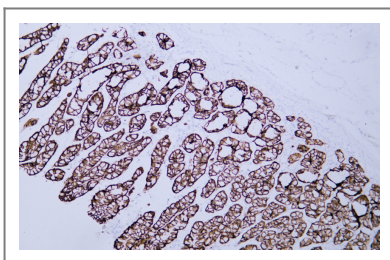
## Validation Data



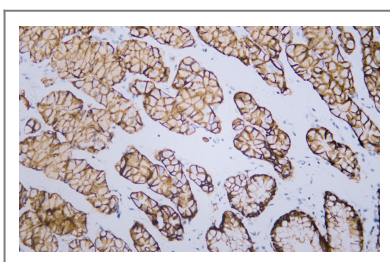
Human stomach tissue was stained with Anti-Claudin 18 (ABT158) Antibody



Human stomach tissue was stained with Anti-Claudin 18 (ABT158) Antibody



Human stomach tissue was stained with Anti-Claudin 18 (ABT158) Antibody



Human stomach tissue was stained with Anti-Claudin 18 (ABT158) Antibody

## | Contact information

Orders: order@immunoway.com  
Support: tech@immunoway.com  
Telephone: 408-747-0189 (USA) 400-8787-807(China)  
Website: <http://www.immunoway.com>  
Address: 2200 Ringwood Ave San Jose, CA 95131 USA



Please scan the QR code  
to access additional  
product information:  
**Claudin 18 (ABT158)**  
**IHC kit**

---

For Research Use Only. Not for Use in Diagnostic Procedures.

[Antibody](#) | [ELISA Kits](#) | [Protein](#) | [Reagents](#)