

Cytokeratin 7 (ABT319) IHC kit

CatalogNo: IHCM6179

Key Features

Host Species

- Mouse

Reactivity

- Human,

Applications

- IHC

Isotype

- IgG1,Kappa

Recommended Dilution Ratios

Storage

Storage* 2°C to 8°C/1 year

Basic Information

Clonality Monoclonal

Clone Number ABT319

Immunogen Information

Immunogen Synthesized peptide derived from human Cytokeratin 7 AA range: 350-469

Specificity The antibody can specifically recognize human CK7 protein, and shows no cross reaction with CK1, 4, 5, 6, 8, 10, 14, 17, 18, 19, 20.

Target Information

Gene name KRT7 SCL

Protein Name CK 7;CK-7;CK7;Cytokeratin 7;Cytokeratin-7;D15Wsu77e;K2C7;K2C7_HUMAN;K7;Keratin 7;Keratin 7, type II;Keratin type II cytoskeletal 7;Keratin, 55K type II cytoskeletal;Keratin, simple epithelial;Keratin, simple epithelial type I, K7;Keratin, type II cytoskeletal 7;Keratin-7;Krt2-7;KRT7;MGC11625;MGC129731;MGC3625;Sarcolectin;SCL;Type II mesothelial keratin K7;Type-II keratin Kb7

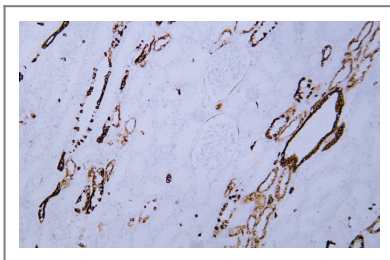
Organism	Gene ID	UniProt ID
Human	3855;	P08729;
Mouse		Q9DCV7;
Rat		Q6IG12;

Cellular Localization Cytoplasmic, Membranous

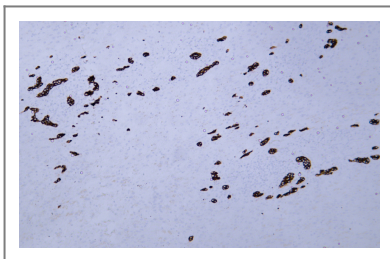
Tissue specificity Pancreas

Function Function:Blocks interferon-dependent interphase and stimulates DNA synthesis in cells. Involved in the translational regulation of the human papillomavirus type 16 E7 mRNA (HPV16 E7).,induction:Up-regulated by retinoic acid.,mass spectrometry: PubMed:11840567,miscellaneous:There are two types of cytoskeletal and microfibrillar keratin: I (acidic; 40-55 kDa) and II (neutral to basic; 56-70 kDa).,PTM:Arg-20 is dimethylated, probably to asymmetric dimethylarginine.,similarity:Belongs to the intermediate filament family.,subunit:Heterotetramer of two type I and two type II keratins. Interacts with eukaryotic translation initiator factor 3 (eIF3) subunit EIF3S10 and with HPV16 E7.,tissue specificity:Expressed in cultured epidermal, bronchial and mesothelial cells but absent in colon, ectocervix and liver. Observed throughout the glandular cells in the junction between stomach and esophagus but is absent in the esophagus.,

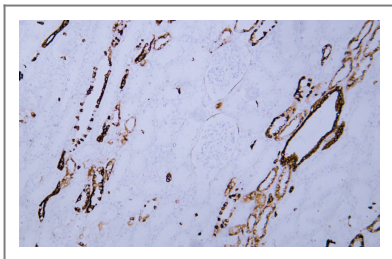
Validation Data



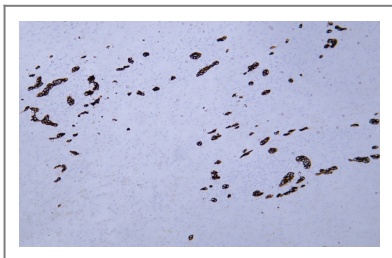
Human kidney tissue was stained with Anti-Cytokeratin 7 (ABT319) Antibody



Human liver tissue was stained with Anti-Cytokeratin 7 (ABT319) Antibody



Human kidney tissue was stained with Anti-Cytokeratin 7 (ABT319) Antibody



Human liver tissue was stained with Anti-Cytokeratin 7 (ABT319) Antibody

| Contact information

Orders: order@immunoway.com
Support: tech@immunoway.com
Telephone: 408-747-0189 (USA) 400-8787-807(China)
Website: <http://www.immunoway.com>
Address: 2200 Ringwood Ave San Jose, CA 95131 USA



Please scan the QR code
to access additional
product information:
**Cytokeratin 7
(ABT319) IHC kit**

For Research Use Only. Not for Use in Diagnostic Procedures.

[Antibody](#) | [ELISA Kits](#) | [Protein](#) | [Reagents](#)