

# Cytokeratin 7 (ABT-CK7) IHC kit

CatalogNo: IHCM6169

## Key Features

### Host Species

- Mouse

### Reactivity

- Human,

### Applications

- IHC

### Isotype

- IgG2b,Kappa

## Recommended Dilution Ratios

## Storage

**Storage\*** 2°C to 8°C/1 year

## Basic Information

**Clonality** Monoclonal

**Clone Number** ABT-CK7

## Immunogen Information

**Immunogen** Synthesized peptide derived from human Cytokeratin 7 AA range: 350-469

**Specificity** The antibody can specifically recognize human CK7 protein, and shows no cross reaction with CK1, 4, 5, 6, 8, 10, 14, 17, 18, 19, 20.

## Target Information

**Gene name** KRT7 SCL

**Protein Name** Keratin, type II cytoskeletal 7 (Cytokeratin-7) (CK-7) (Keratin-7) (K7) (Sarcolectin) (Type-II keratin Kb7)

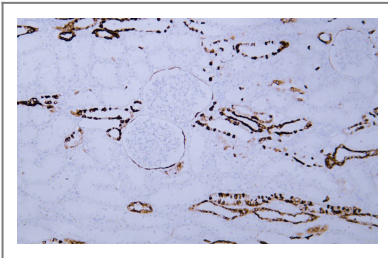
Organism	Gene ID	UniProt ID
Human	<a href="#">3855</a> ;	<a href="#">P08729</a> ;

**Cellular Localization** Cytoplasmic, Membranous

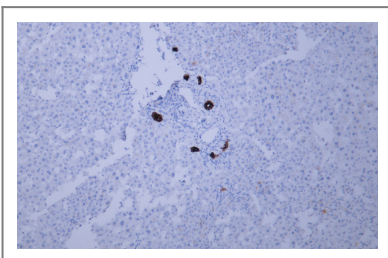
**Tissue specificity** Expressed in cultured epidermal, bronchial and mesothelial cells but absent in colon, ectocervix and liver. Observed throughout the glandular cells in the junction between stomach and esophagus but is absent in the esophagus.

**Function** Function:Blocks interferon-dependent interphase and stimulates DNA synthesis in cells. Involved in the translational regulation of the human papillomavirus type 16 E7 mRNA (HPV16 E7).,induction:Up-regulated by retinoic acid.,mass spectrometry: PubMed:11840567,miscellaneous:There are two types of cytoskeletal and microfibrillar keratin: I (acidic; 40-55 kDa) and II (neutral to basic; 56-70 kDa).,PTM:Arg-20 is dimethylated, probably to asymmetric dimethylarginine.,similarity:Belongs to the intermediate filament family.,subunit:Heterotetramer of two type I and two type II keratins. Interacts with eukaryotic translation initiator factor 3 (eIF3) subunit EIF3S10 and with HPV16 E7.,tissue specificity:Expressed in cultured epidermal, bronchial and mesothelial cells but absent in colon, ectocervix and liver. Observed throughout the glandular cells in the junction between stomach and esophagus but is absent in the esophagus.,

## Validation Data



Human kidney tissue was stained with Anti-Cytokeratin 7 (ABT-CK7) Antibody



Human liver tissue was stained with Anti-Cytokeratin 7 (ABT-CK7) Antibody

## Contact information

Orders: order@immunoway.com  
Support: tech@immunoway.com  
Telephone: 408-747-0189 (USA) 400-8787-807(China)  
Website: http://www.immunoway.com  
Address: 2200 Ringwood Ave San Jose, CA 95131 USA



Please scan the QR code to access additional product information:  
**Cytokeratin 7 (ABT-CK7) IHC kit**

---

For Research Use Only. Not for Use in Diagnostic Procedures.

[Antibody](#) | [ELISA Kits](#) | [Protein](#) | [Reagents](#)