

# Cytokeratin 18 (ABT-CK18) IHC kit

CatalogNo: IHCM6166

## Key Features

### Host Species

- Mouse

### Reactivity

- Human, Mouse, Rat,

### Applications

- IHC

### Isotype

- IgG2b, Kappa

## Recommended Dilution Ratios

## Storage

**Storage\*** 2°C to 8°C/1 year

## Basic Information

**Clonality** Monoclonal

**Clone Number** ABT-CK18

## Immunogen Information

**Immunogen** Synthesized peptide derived from human Cytokeratin 18 AA range: 200-300

**Specificity** The antibody can specifically recognize human CK18 protein, and shows no cross reaction with CK1, 5, 6, 7, 8, 10, 13, 14, 15, 17, 19, 20.

## Target Information

**Gene name** KRT18 CYK18 PIG46

**Protein Name** Keratin, type I cytoskeletal 18 (Cell proliferation-inducing gene 46 protein) (Cytokeratin-18) (CK-18) (Keratin-18) (K18)

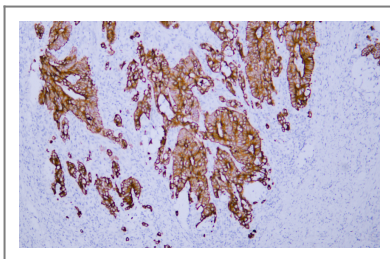
Organism	Gene ID	UniProt ID
Human	<a href="#">3875</a> ;	<a href="#">P05783</a> ;

**Cellular Localization** Cytoplasmic, Membranous

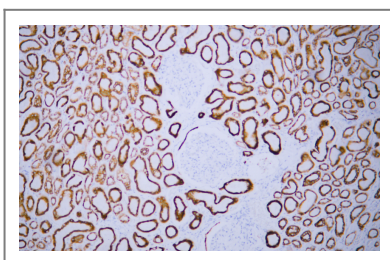
**Tissue specificity** Expressed in colon, placenta, liver and very weakly in exocervix. Increased expression observed in lymph nodes of breast carcinoma.

**Function** Disease:Defects in KRT18 are a cause of cryptogenic cirrhosis [MIM:215600].,Function:Involved in the uptake of thrombin-antithrombin complexes by hepatic cells (By similarity). When phosphorylated, plays a role in filament reorganization. Involved in the delivery of mutated CFTR to the plasma membrane. Together with KRT8, is involved in interleukin-6 (IL-6)-mediated barrier protection.,induction:By IL-6.,miscellaneous:There are two types of cytoskeletal and microfibrillar keratin: I (acidic; 40-55 kDa) and II (neutral to basic; 56-70 kDa).,PTM:O-glycosylated at multiple sites; glycans consist of single N-acetylglucosamine residues.,PTM:Phosphorylation at Ser-34 increases during mitosis. Hyperphosphorylated at Ser-53 in diseased cirrhosis liver. Phosphorylation increases by IL-6.,PTM:Proteolytically cleaved by caspases during epithelial cell apoptosis. Cleavage occurs at Asp-238 by either caspase-3, caspase-6 or caspase-7.,similarity:Belongs to the intermediate filament family.,subunit:Heterotetramer of two type I and two type II keratins. Keratin-18 associates with keratin-8. Interacts with the thrombin-antithrombin complex (By similarity). Interacts with PNN, HCV core protein and mutated CFTR. Interacts with YWHAЕ, YWHAH and YWHAZ only when phosphorylated. Interacts with DNAJB6, TCHP and TRADD.,tissue specificity:Expressed in colon, placenta, liver and very weakly in exocervix. Increased expression observed in lymph nodes of breast carcinoma.,

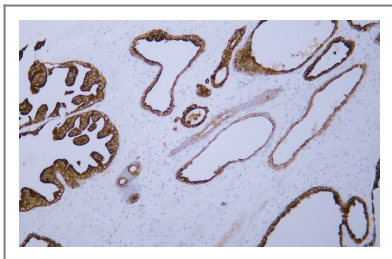
## Validation Data



Human colon carcinoma tissue was stained with Anti-Cytokeratin 18 (ABT-CK18) Antibody



Human kidney tissue was stained with Anti-Cytokeratin 18 (ABT-CK18) Antibody



Human prostate tissue was stained with Anti-Cytokeratin 18 (ABT-CK18) Antibody

## | Contact information

Orders: [order@immunoway.com](mailto:order@immunoway.com)  
Support: [tech@immunoway.com](mailto:tech@immunoway.com)  
Telephone: 408-747-0189 (USA) 400-8787-807(China)  
Website: <http://www.immunoway.com>  
Address: 2200 Ringwood Ave San Jose, CA 95131 USA



Please scan the QR code to access additional product information:  
**Cytokeratin 18 (ABT-CK18) IHC kit**

---

For Research Use Only. Not for Use in Diagnostic Procedures.

[Antibody](#) | [ELISA Kits](#) | [Protein](#) | [Reagents](#)