

Cytokeratin 13 (ABT-CK13) IHC kit

CatalogNo: IHCM6163

Key Features

Host Species

- Mouse

Reactivity

- Human,

Applications

- IHC

Isotype

- IgG1,Kappa

Recommended Dilution Ratios

Storage

Storage* 2°C to 8°C/1 year

Basic Information

Clonality Monoclonal

Clone Number ABT-CK13

Immunogen Information

Immunogen Synthesized peptide derived from human Cytokeratin 13 AA range: 400-458

Specificity The antibody can specifically recognize human CK13 protein.

Target Information

Gene name KRT13

Protein Name Keratin, type I cytoskeletal 13 (Cytokeratin-13) (CK-13) (Keratin-13) (K13)

Organism

Gene ID

UniProt ID

Human

[3860](#);

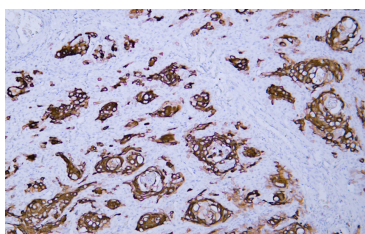
[P13646](#);

Cellular Localization Cytoplasmic, Membranous

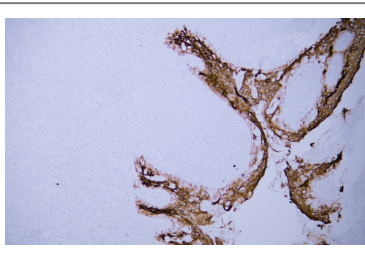
Tissue specificity Expressed in some epidermal sweat gland ducts (at protein level) and in exocervix, esophagus and placenta.

Function Disease:Defects in KRT13 are a cause of white sponge nevus of cannon (WSN) [MIM:193900]. WSN is a rare autosomal dominant disorder which predominantly affects non-cornified stratified squamous epithelia. Clinically, it is characterized by the presence of soft, white, and spongy plaques in the oral mucosa. The characteristic histopathologic features are epithelial thickening, parakeratosis, and vacuolization of the suprabasal layer of oral epithelial keratinocytes. Less frequently the mucous membranes of the nose, esophagus, genitalia and rectum are involved.,miscellaneous:There are two types of cytoskeletal and microfibrillar keratin: I (acidic; 40-55 kDa) and II (neutral to basic; 56-70 kDa).,online information:Keratin-13 entry,PTM:O-glycosylated; glycans consist of single N-acetylglucosamine residues.,similarity:Belongs to the intermediate filament family.,subunit:Heterotetramer of two type I and two type II keratins. keratin-13 is generally associated with keratin-4.,tissue specificity:Expressed in some epidermal sweat gland ducts (at protein level) and in exocervix, esophagus and placenta.,

Validation Data



Human cervical squamous cell carcinoma tissue was stained with Anti-Cytokeratin 13 (ABT-CK13) Antibody



Human tonsil tissue was stained with Anti-Cytokeratin 13 (ABT-CK13) Antibody

Contact information

Orders: order@immunoway.com
Support: tech@immunoway.com
Telephone: 408-747-0189 (USA) 400-8787-807(China)
Website: http://www.immunoway.com
Address: 2200 Ringwood Ave San Jose, CA 95131 USA



Please scan the QR code
to access additional
product information:
Cytokeratin 13
(ABT-CK13) IHC kit

For Research Use Only. Not for Use in Diagnostic Procedures.

[Antibody](#) | [ELISA Kits](#) | [Protein](#) | [Reagents](#)