

CD7 (ABT-CD7) IHC kit

CatalogNo: IHCM6159

Key Features

Host Species

- Mouse

Reactivity

- Human,

Applications

- IHC

Isotype

- IgG2a,Kappa

Recommended Dilution Ratios

Storage

Storage* 2°C to 8°C/1 year

Basic Information

Clonality Monoclonal

Clone Number ABT-CD7

Immunogen Information

Immunogen Synthesized peptide derived from human CD7 AA range: 1-100

Specificity The antibody can specifically recognize human CD7 protein.

Target Information

Gene name CD7

Protein Name T-cell antigen CD7 (GP40) (T-cell leukemia antigen) (T-cell surface antigen Leu-9) (TP41) (CD antigen CD7)

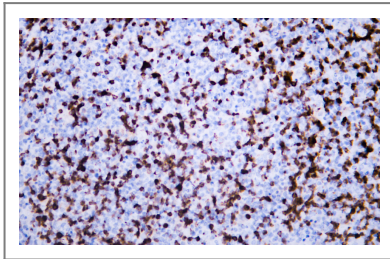
Organism	Gene ID	UniProt ID
Human	924;	P09564;

Cellular Localization Membranous

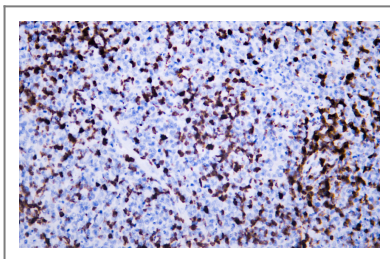
Tissue specificity Liver,Muscle,Spleen,

Function Function:Not yet known.,similarity:Contains 1 Ig-like (immunoglobulin-like) domain.,subunit:Interacts with SECTM1.,

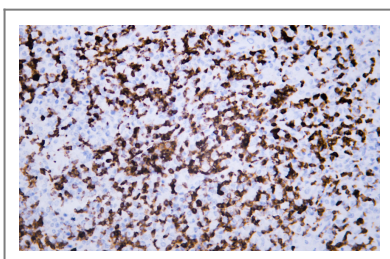
Validation Data



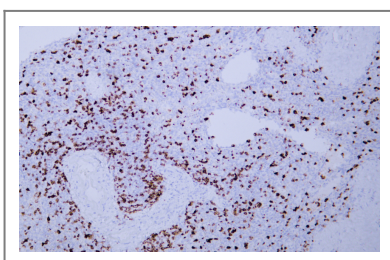
Human lymphoma tissue was stained with Anti-CD7 (ABT-CD7) Antibody



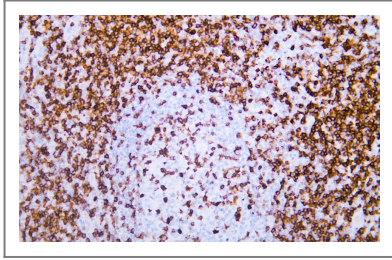
Human lymphoma tissue was stained with Anti-CD7 (ABT-CD7) Antibody



Human lymphoma tissue was stained with Anti-CD7 (ABT-CD7) Antibody



Human spleen tissue was stained with Anti-CD7 (ABT-CD7) Antibody



Human tonsil tissue was stained with Anti-CD7 (ABT-CD7) Antibody

| Contact information

Orders: order@immunoway.com
Support: tech@immunoway.com
Telephone: 408-747-0189 (USA) 400-8787-807(China)
Website: <http://www.immunoway.com>
Address: 2200 Ringwood Ave San Jose, CA 95131 USA



Please scan the QR code
to access additional
product information:
**CD7 (ABT-CD7) IHC
kit**

For Research Use Only. Not for Use in Diagnostic Procedures.

[Antibody](#) | [ELISA Kits](#) | [Protein](#) | [Reagents](#)