

# Chromogranin A (ABT037) IHC kit

CatalogNo: IHCM6150

## Key Features

### Host Species

- Mouse

### Reactivity

- Human, Mouse,

### Applications

- IHC

### Isotype

- IgG1, Kappa

## Recommended Dilution Ratios

## Storage

**Storage\*** 2°C to 8°C/1 year

## Basic Information

**Clonality** Monoclonal

**Clone Number** ABT037

## Immunogen Information

**Immunogen** Synthesized peptide derived from human Chromogranin A AA range: 19-94

**Specificity** The antibody can specifically recognize human Chromogranin A protein.

## Target Information

**Gene name** CHGA

**Protein Name** beta Granin;betagranin (N-terminal fragment of chromogranin A);catestatin;CgA;CHG A;Chga;chromofungin;Chromogranin A;Chromogranin A parathyroid secretory protein 1;Chromogranin A precursor;ChromograninA;CMGA\_HUMAN;ER-37;Pancreastatin;Parastatin;Parathyroid secretory protein 1;Pituitary secretory protein I;Secretory protein I;SP I;SP-I;SP1;SPI;vasostatin 2;Vasostatin;Vasostatin I;Vasostatin II;vasostatin-2

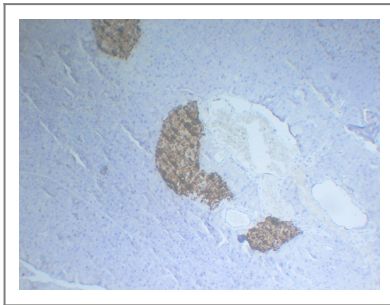
Organism	Gene ID	UniProt ID
Human	<a href="#">1113;</a>	<a href="#">P10645;</a>
Mouse		<a href="#">P26339;</a>
Rat		<a href="#">P10354;</a>

**Cellular Localization** Cytoplasmic

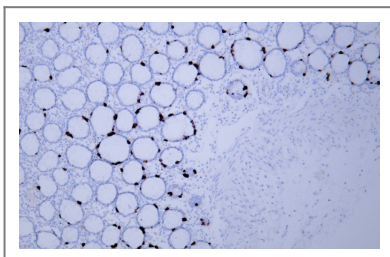
**Tissue specificity** Pancreas/ stomach

**Function** Function:Pancreastatin strongly inhibits glucose induced insulin release from the pancreas.,miscellaneous:Binds calcium with a low-affinity.,PTM:Sulfated on tyrosine residues and/or contains sulfated glycans.,similarity:Belongs to the chromogranin/secretogranin protein family.,subcellular location:Neuroendocrine and endocrine secretory granules.,

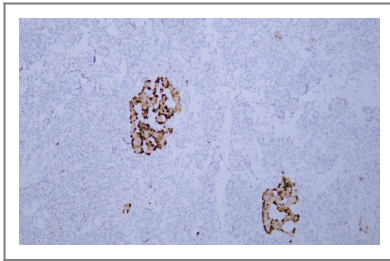
## Validation Data



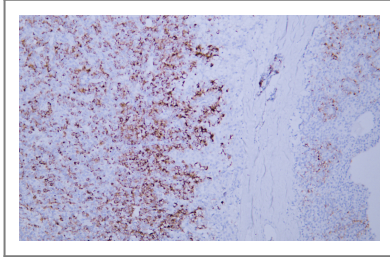
Mouse pancreas tissue was stained with Anti-Chromogranin A (ABT037) Antibody



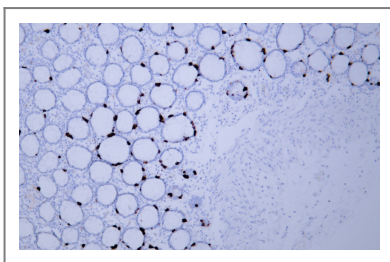
Human colon tissue was stained with Anti-Chromogranin A (ABT037) Antibody



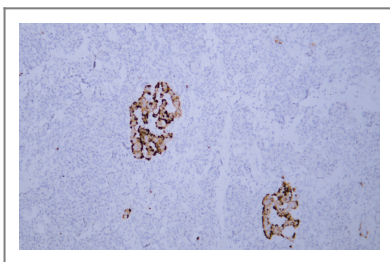
Human pancreas tissue was stained with Anti-Chromogranin A (ABT037) Antibody



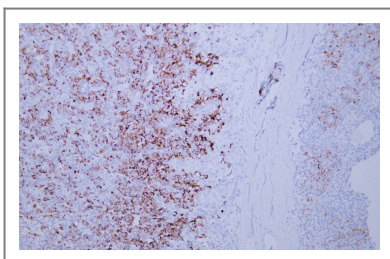
Human parathyroidoma tissue was stained with Anti-Chromogranin A (ABT037) Antibody



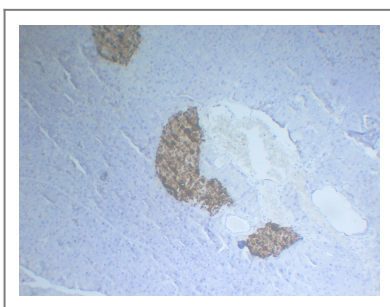
Human colon tissue was stained with Anti-Chromogranin A (ABT037) Antibody



Human pancreas tissue was stained with Anti-Chromogranin A (ABT037) Antibody



Human parathyroidoma tissue was stained with Anti-Chromogranin A (ABT037) Antibody



Mouse pancreas tissue was stained with Anti-Chromogranin A (ABT037) Antibody

## **| Contact information**

Orders: order@immunoway.com  
Support: tech@immunoway.com  
Telephone: 408-747-0189 (USA) 400-8787-807(China)  
Website: http://www.immunoway.com  
Address: 2200 Ringwood Ave San Jose, CA 95131 USA



Please scan the QR code  
to access additional  
product information:  
**Chromogranin A  
(ABT037) IHC kit**

---

For Research Use Only. Not for Use in Diagnostic Procedures.

[Antibody](#) | [ELISA Kits](#) | [Protein](#) | [Reagents](#)