

hPL (ABT223) IHC kit

CatalogNo: IHCM6139

Key Features

Host Species

- Mouse

Reactivity

- Human,

Applications

- IHC

Isotype

- IgG2b,Kappa

Recommended Dilution Ratios

Storage

Storage* 2°C to 8°C/1 year

Basic Information

Clonality Monoclonal

Clone Number ABT223

Immunogen Information

Immunogen Synthesized peptide derived from humanPlacental lactogen AA range:100-200

Specificity This antibody detects endogenous levels of hPL.

Target Information

Gene name CSH1/CSH2

Protein Name Chorionic somatomammotropin hormone 1/Chorionic somatomammotropin hormone 2

Organism

Human

Gene ID

[1442](#);

UniProt ID

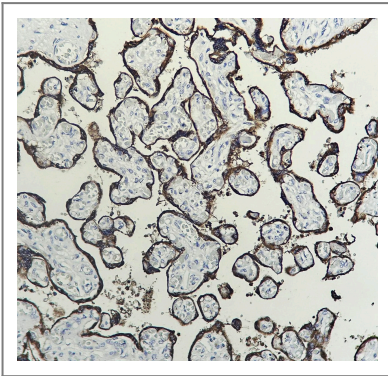
[P0DML2](#); [P0DML3](#);

Cellular Localization Cytoplasmic

Tissue specificity placenta

Function Produced only during pregnancy and is involved in stimulating lactation, fetal growth and metabolism. Does not interact with GHR but only activates PRLR through zinc-induced dimerization.

Validation Data



Human placenta tissue was stained with Anti-hPL (ABT223) Antibody

Contact information

Orders: order@immunoway.com
Support: tech@immunoway.com
Telephone: 408-747-0189 (USA) 400-8787-807(China)
Website: <http://www.immunoway.com>
Address: 2200 Ringwood Ave San Jose, CA 95131 USA



Please scan the QR code to access additional product information:
hPL (ABT223) IHC kit

For Research Use Only. Not for Use in Diagnostic Procedures.

[Antibody](#) | [ELISA Kits](#) | [Protein](#) | [Reagents](#)