

## CEA (ABT004) IHC kit

CatalogNo: IHCM6136

### Key Features

#### Host Species

- Mouse

#### Reactivity

- Human,

#### Applications

- IHC

#### Isotype

- IgG2b,Kappa

### Recommended Dilution Ratios

### Storage

**Storage\*** 2°C to 8°C/1 year

### Basic Information

**Clonality** Monoclonal

**Clone Number** ABT004

### Immunogen Information

**Immunogen** Recombinant protein AA range: 35-314

**Specificity** This antibody detects endogenous levels of CEA protein.

### Target Information

**Gene name** CEACAM5 CEA

**Protein Name** Carcinoembryonic antigen-related cell adhesion molecule 5 (Carcinoembryonic antigen) (CEA) (Meconium antigen 100) (CD antigen CD66e)

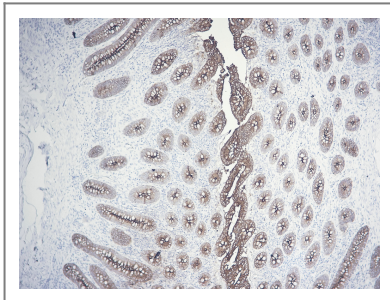
Organism	Gene ID	UniProt ID
Human	<a href="#">1048</a> ;	<a href="#">P06731</a> ;

**Cellular Localization** Cytoplasmic, Membranous

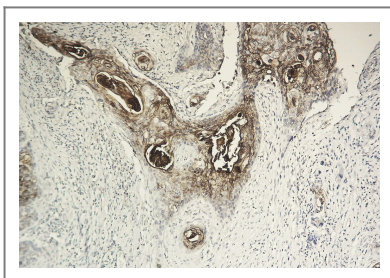
**Tissue specificity** Expressed in columnar epithelial and goblet cells of the colon (at protein level) (PubMed:10436421). Found in adenocarcinomas of endodermally derived digestive system epithelium and fetal colon.

**Function** Function:Cell surface glycoprotein that plays a role in cell adhesion and in intracellular signaling. Receptor for E.coli Dr adhesins.,PTM:Complex immunoreactive glycoprotein with a MW of 180 kDa comprising 60% carbohydrate.,similarity:Belongs to the immunoglobulin superfamily. CEA family.,similarity:Contains 7 Ig-like (immunoglobulin-like) domains.,subunit:Homodimer. Binding of E.coli Dr adhesins leads to dissociation of the homodimer.,tissue specificity:Found in adenocarcinomas of endodermally derived digestive system epithelium and fetal colon.,

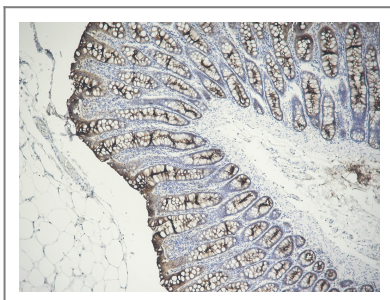
## Validation Data



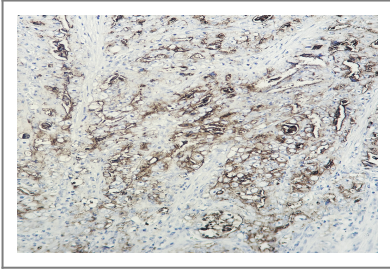
Human appendix tissue was stained with Anti-CEA (ABT004) Antibody



Human cervical carcinoma tissue was stained with Anti-CEA (ABT004) Antibody



Human colon tissue was stained with Anti-CEA (ABT004) Antibody



Human colon carcinoma tissue was stained with Anti-CEA (ABT004) Antibody

## Contact information

Orders: [order@immunoway.com](mailto:order@immunoway.com)  
Support: [tech@immunoway.com](mailto:tech@immunoway.com)  
Telephone: 877-594-3616 (Toll Free), 408-747-0185  
Website: <http://www.immunoway.com>  
Address: 2200 Ringwood Ave San Jose, CA 95131 USA



Please scan the QR code  
to access additional  
product information:  
**CEA (ABT004) IHC  
kit**

---

For Research Use Only. Not for Use in Diagnostic Procedures.

[Antibody](#) | [ELISA Kits](#) | [Protein](#) | [Reagents](#)