

MUC2 (ABT390) IHC kit

CatalogNo: IHCM6125

Key Features

Host Species

- Mouse

Reactivity

- Human,

Applications

- IHC

Isotype

- IgG1,Kappa

Recommended Dilution Ratios

Storage

Storage* 2°C to 8°C/1 year

Basic Information

Clonality Monoclonal

Clone Number ABT390

Immunogen Information

Immunogen Synthesized peptide derived from human MUC2 AA range: 1800-2000

Specificity The antibody can specifically recognize MUC2 protein.

Target Information

Gene name MUC2 SMUC

Protein Name Mucin-2 (MUC-2) (Intestinal mucin-2)

Organism

Gene ID

UniProt ID

Human

[4583;](#)

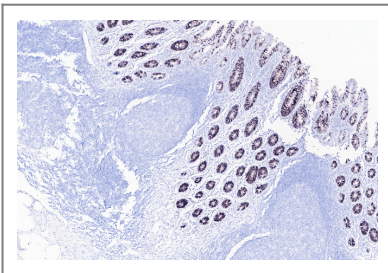
[Q02817;](#)

Cellular Localization Cytoplasmic

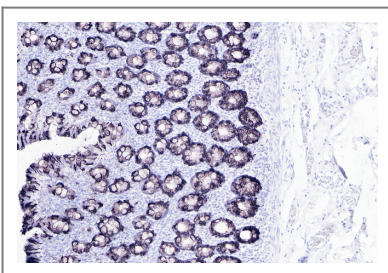
Tissue specificity Colon, small intestine, colonic tumors, bronchus, cervix and gall bladder.

Function Function:Coats the epithelia of the intestines, airways, and other mucus membrane-containing organs. Thought to provide a protective, lubricating barrier against particles and infectious agents at mucosal surfaces. Major constituent of both the inner and outer mucus layers of the colon and may play a role in excluding bacteria from the inner mucus layer.,polymorphism:The number of repeats is highly polymorphic and varies among different alleles.,PTM:At low pH of 6 and under, undergoes autocatalytic cleavage in vitro in the N-terminal region of the fourth VWD domain. It is likely that this also occurs in vivo and is triggered by the low pH of the late secretory pathway.,PTM:May undergo proteolytic cleavage in the outer mucus layer of the colon, contributing to the expanded volume and loose nature of this layer which allows for bacterial colonization in contrast to the inner mucus layer which is dense and devoid of bacteria.,PTM:O-glycosylated.,similarity:Contains 1 CTCK (C-terminal cystine knot-like) domain.,similarity:Contains 1 TIL (trypsin inhibitory-like) domain.,similarity:Contains 2 VWFC domains.,similarity:Contains 4 VWFD domains.,subunit:Homotrimer; disulfide-linked. Dimerizes in the endoplasmic reticulum via its C-terminal region and polymerizes via its N-terminal region by disulfide-linked trimerization. Interacts with FCGBP.,tissue specificity:Colon, small intestine, colonic tumors, bronchus, cervix and gall bladder.,

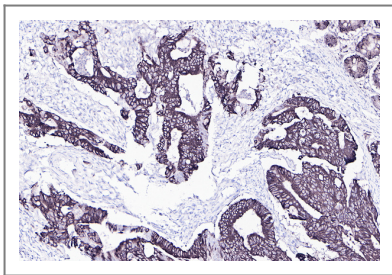
Validation Data



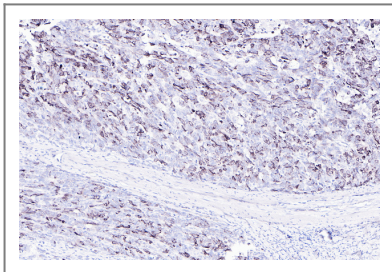
Human appendix tissue was stained with MUC2 (ABT390) Antibody



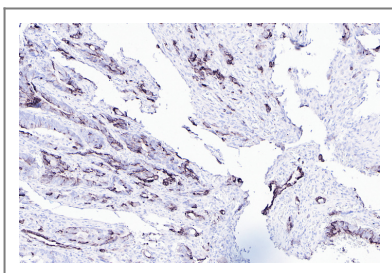
Human colon tissue was stained with MUC2 (ABT390) Antibody



Human colon carcinom tissue was stained with MUC2 (ABT390) Antibody



Human colon carcinom tissue was stained with MUC2 (ABT390) Antibody



Human colon carcinom tissue was stained with MUC2 (ABT390) Antibody

Contact information

Orders: order@immunoway.com
Support: tech@immunoway.com
Telephone: 408-747-0189 (USA) 400-8787-807(China)
Website: <http://www.immunoway.com>
Address: 2200 Ringwood Ave San Jose, CA 95131 USA



Please scan the QR code to access additional product information:
MUC2 (ABT390) IHC kit

For Research Use Only. Not for Use in Diagnostic Procedures.

[Antibody](#) | [ELISA Kits](#) | [Protein](#) | [Reagents](#)