

## CD61 (ABT032) IHC kit

CatalogNo: IHCM6117

### Key Features

#### Host Species

- Mouse

#### Reactivity

- Human, Mouse,

#### Applications

- IHC

#### Isotype

- IgG1, Kappa

### Recommended Dilution Ratios

### Storage

**Storage\*** 2°C to 8°C/1 year

### Basic Information

**Clonality** Monoclonal

**Clone Number** ABT032

### Immunogen Information

**Immunogen** Synthesized peptide derived from human CD61 AA range: 1-100

**Specificity** The antibody can specifically recognize human CD61 protein.

### Target Information

**Gene name** ITGB3 GP3A

**Protein Name** Integrin beta-3 (Platelet membrane glycoprotein IIIa) (GPIIIa) (CD antigen CD61)

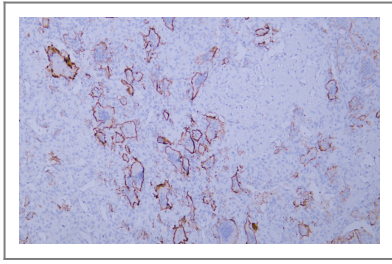
Organism	Gene ID	UniProt ID
Human	<a href="#">3690</a> ;	<a href="#">P05106</a> ;

**Cellular Localization** Cytoplasmic

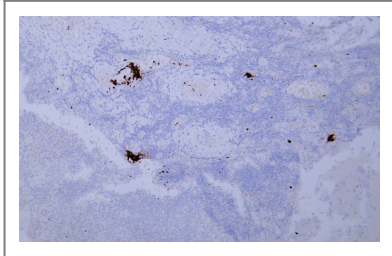
**Tissue specificity** Isoform beta-3A and isoform beta-3C are widely expressed. Isoform beta-3A is specifically expressed in osteoblast cells; isoform beta-3C is specifically expressed in prostate and testis.

**Function** Disease:Defects in ITGB3 are a cause of Glanzmann thrombasthenia (GT) [MIM:273800]; also known as thrombasthenia of Glanzmann and Naegeli. GT is the most common inherited disease of platelets. Its inheritance is autosomal recessive. It is characterized by mucocutaneous bleeding of mild-to-moderate severity and the inability of this integrin to recognize macromolecular or synthetic peptide ligands. GT has been classified clinically into types I and II. In type I, platelets show absence of the glycoprotein IIb-IIIa complexes at their surface and lack fibrinogen and clot retraction capability. In type II, the platelets express the GPIIb-IIIa complex at reduced levels (5-20% controls), have detectable amounts of fibrinogen, and have low or moderate clot retraction capability. The platelets of GT variants have normal or near normal (60-100%) expression of dysfunctional receptors.,Function:Integrin alpha-V/beta-3 is a receptor for cytotactin, fibronectin, laminin, matrix metalloproteinase-2, osteopontin, osteomodulin, prothrombin, thrombospondin, vitronectin and von Willebrand factor. Integrin alpha-IIb/beta-3 is a receptor for fibronectin, fibrinogen, plasminogen, prothrombin, thrombospondin and vitronectin. Integrins alpha-IIb/beta-3 and alpha-V/beta-3 recognize the sequence R-G-D in a wide array of ligands. Integrin alpha-IIb/beta-3 recognizes the sequence H-H-L-G-G-G-A-K-Q-A-G-D-V in fibrinogen gamma chain. Following activation integrin alpha-IIb/beta-3 brings about platelet/platelet interaction through binding of soluble fibrinogen. This step leads to rapid platelet aggregation which physically plugs ruptured endothelial surface. In case of HIV-1 infection, the interaction with extracellular viral Tat protein seems to enhance angiogenesis in Kaposi's sarcoma lesions.,online information:The Singapore human mutation and polymorphism database,polymorphism:Position 169 is associated with platelet-specific alloantigen HPA-4 (PEN or YUK). HPA-4A/PEN(A)/YUK(A) has Arg-169 and HPA-4B/PEN(B)/YUK(B) has Gln-169. HPA-4B is involved in neonatal alloimmune thrombocytopenia (NAIT or NATP),polymorphism:Position 433 is associated with platelet-specific alloantigen MO. MO(-) has Pro-433 and MO(+) has Ala-433. MO(+) is involved in NAIT.,polymorphism:Position 515 is associated with platelet-specific alloantigen CA/TU. CA(-)/TU(-) has Arg-515 and CA(+)/TU(+) has Gln-515. CA(+) is involved in NAIT.,polymorphism:Position 59 is associated with platelet-specific alloantigen HPA-1 (ZW or PL(A)). HPA-1A/ZW(A)/PL(A1) has Leu-59 and HPA-1B/ZW(B)/PL(A2) has Pro-59.,polymorphism:Position 662 is associated with platelet-specific alloantigen SR(A). SR(A)(-) has Arg-662 and SR(A)(+) has Cys-662.,PTM:Phosphorylated on tyrosine residues in response to thrombin-induced platelet aggregation. Probably involved in outside-in signaling. A peptide (AA 740-762) is capable of binding GRB2 only when both Tyr-773 and Tyr-785 are phosphorylated. Phosphorylation of Thr-779 inhibits SHC binding.,similarity:Belongs to the integrin beta chain family.,similarity:Contains 1 VWFA domain.,subunit:Heterodimer of an alpha and a beta subunit. Beta-3 associates with either alpha-IIb or alpha-V. Isoform Beta-3C interacts with FLNB. Interacts with HIV-1 Tat.,tissue specificity:Isoform beta-3A and isoform beta-3C are widely expressed. Isoform beta-3A is specifically expressed in osteoblast cells; isoform beta-3C is specifically expressed in prostate and testis.,

## Validation Data



Human giant cell tumor tissue was stained with Anti-CD61 (ABT032) Antibody



Human tonsil tissue was stained with Anti-CD61 (ABT032) Antibody

## Contact information

Orders: [order@immunoway.com](mailto:order@immunoway.com)  
Support: [tech@immunoway.com](mailto:tech@immunoway.com)  
Telephone: 408-747-0189 (USA) 400-8787-807(China)  
Website: <http://www.immunoway.com>  
Address: 2200 Ringwood Ave San Jose, CA 95131 USA



Please scan the QR code to access additional product information:  
**CD61 (ABT032) IHC kit**

For Research Use Only. Not for Use in Diagnostic Procedures.

[Antibody](#) | [ELISA Kits](#) | [Protein](#) | [Reagents](#)