

Cytokeratin 8 (ABT534) IHC kit

CatalogNo: IHCM6110

Key Features

Host Species

- Mouse

Reactivity

- Human, Mouse, Rat,

Applications

- IHC

Isotype

- IgG2b, Kappa

Recommended Dilution Ratios

Storage

Storage* 2°C to 8°C/1 year

Basic Information

Clonality Monoclonal

Clone Number ABT534

Immunogen Information

Immunogen Synthesized peptide derived from human Cytokeratin 8 AA range: 400-483

Specificity The antibody can specifically recognize human CK8 protein, and shows no cross reaction with CK1, 4, 5, 6, 7, 10, 15, 16, 17, 18, 20.

Target Information

Gene name KRT8 CYK8

Protein Name CARD2;CK 8;CK-8;CK8;CYK8;CYKER;Cytokeratin endo A;Cytokeratin-8;DreK8;EndoA;K2C8;K2C8_HUMAN;K8;Keratin 8;Keratin type II cytoskeletal 8;Keratin, type II cytoskeletal 8;Keratin-8;KO;Krt 2.8;KRT8;MGC118110;MGC174782;MGC53564;MGC85764;sb:cb186;Type-II keratin Kb8

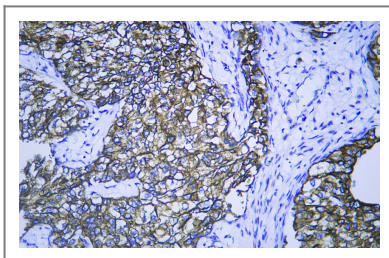
Organism	Gene ID	UniProt ID
Human	3856;	P05787;
Mouse		P11679;
Rat		Q10758;

Cellular Localization Cytoplasmic, Membranous

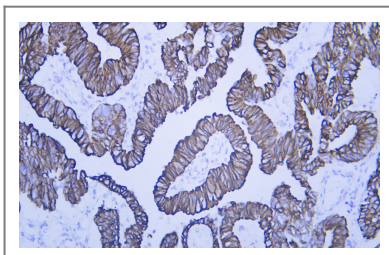
Tissue specificity Liver/ Tonsil

Function Disease:Defects in KRT8 are a cause of cryptogenic cirrhosis [MIM:215600].,Function:Together with KRT19, helps to link the contractile apparatus to dystrophin at the costameres of striated muscle.,miscellaneous:There are two types of cytoskeletal and microfibrillar keratin: I (acidic; 40-55 kDa) and II (neutral to basic; 56-70 kDa).,PTM:O-glycosylated at multiple sites; glycans consist of single N-acetylglucosamine residues.,PTM:Phosphorylation on serine residues is enhanced during EGF stimulation and mitosis. Ser-74 phosphorylation plays an important role in keratin filament reorganization.,similarity:Belongs to the intermediate filament family.,subunit:Heterotetramer of two type I and two type II keratins. keratin-8 associates with keratin-18. Associates with KRT20. Interacts with HCV core protein and PNN. When associated with KRT19, interacts with DMD. Interacts with TCHP.,tissue specificity:Observed in muscle fibers accumulating in the costameres of myoplasm at the sarcolemma membrane in structures that contain dystrophin and spectrin. Expressed in gingival mucosa and hard palate of the oral cavity.,

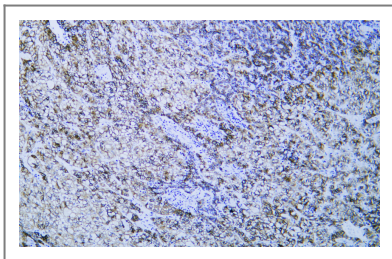
Validation Data



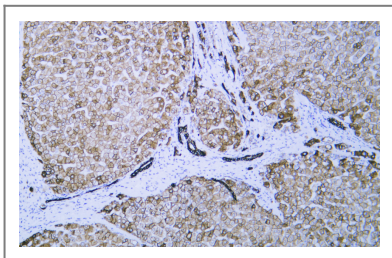
Human Breast Cancer tissue was stained with Anti-Cytokeratin 8 (ABT534) Antibody



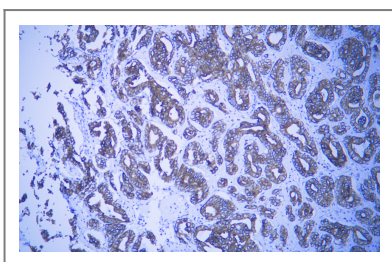
Human colon carcinoma tissue was stained with Anti-Cytokeratin 8 (ABT534) Antibody



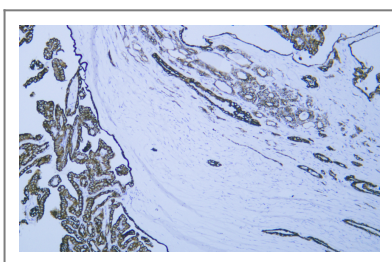
Human hepatocellular carcinoma tissue was stained with Anti-Cytokeratin 8 (ABT534) Antibody



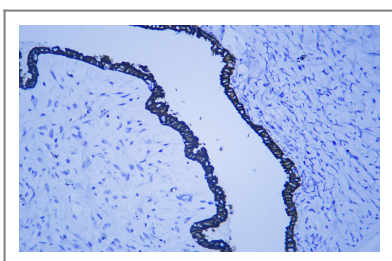
Human liver tissue was stained with Anti-Cytokeratin 8 (ABT534) Antibody



Human prostatic cancer tissue was stained with Anti-Cytokeratin 8 (ABT534) Antibody



Human Thyroid follicular carcinoma tissue was stained with Anti-Cytokeratin 8 (ABT534) Antibody



Human Ovarian serous adenocarcinoma tissue was stained with Anti-Cytokeratin 8 (ABT534) Antibody

| Contact information

Orders: order@immunoway.com
Support: tech@immunoway.com
Telephone: 408-747-0189 (USA) 400-8787-807(China)
Website: <http://www.immunoway.com>
Address: 2200 Ringwood Ave San Jose, CA 95131 USA



Please scan the QR code to access additional product information:
Cytokeratin 8 (ABT534) IHC kit

