

## Podoplanin (ABT513) IHC kit

CatalogNo: IHCM6109

### Key Features

#### Host Species

- Mouse

#### Reactivity

- Human,

#### Applications

- IHC

#### Isotype

- IgG1,Kappa

### Recommended Dilution Ratios

### Storage

**Storage\*** 2°C to 8°C/1 year

### Basic Information

**Clonality** Monoclonal

**Clone Number** ABT513

### Immunogen Information

**Immunogen** Synthesized peptide derived from human Podoplanin AA range: 23-100

**Specificity** The antibody can specifically recognize human Podoplanin protein.

### Target Information

**Gene name** PDPN GP36 PSEC0003 PSEC0025

**Protein Name** Aggrus Glycoprotein 36 Gp36 PA2.26 antigen T1-alpha T1A

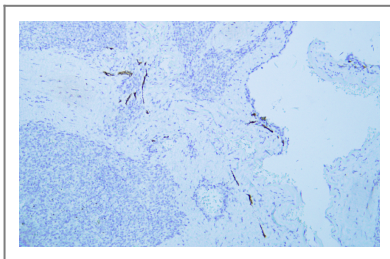
Organism	Gene ID	UniProt ID
Human	<a href="#">10630</a> ;	<a href="#">Q86YL7</a> ;
Mouse		<a href="#">Q62011</a> ;
Rat		<a href="#">Q64294</a> ;

**Cellular Localization** Cytoplasmic

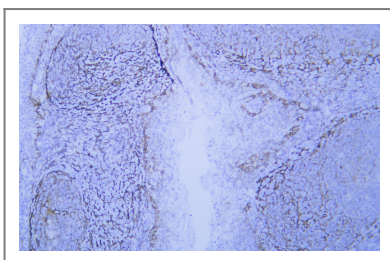
**Tissue specificity** Tonsil/ Appendix

**Function** Caution:The sequence shown here is derived from an Ensembl automatic analysis pipeline and should be considered as preliminary data.,Function:May be involved in cell migration and/or actin cytoskeleton organization. When expressed in keratinocytes, induces changes in cell morphology with transfected cells showing an elongated shape, numerous membrane protrusions, major reorganization of the actin cytoskeleton, increased motility and decreased cell adhesion. Required for normal lung cell proliferation and alveolus formation at birth. Induces platelet aggregation. Does not have any effect on folic acid or amino acid transport. Does not function as a water channel or as a regulator of aquaporin-type water channels.,PTM:Extensively O-glycosylated. Contains sialic acid residues. O-glycosylation is necessary for platelet aggregation activity.,PTM:The N-terminus is blocked.,similarity:Belongs to the podoplanin family.,subcellular location:Localized to actin-rich microvilli and plasma membrane projections such as filopodia, lamellipodia and ruffles.,tissue specificity:Highly expressed in placenta, lung, skeletal muscle and brain. Weakly expressed in brain, kidney and liver. In placenta, expressed on the apical plasma membrane of endothelium. In lung, expressed in alveolar epithelium. Up-regulated in colorectal tumors and expressed in 25% of early oral squamous cell carcinomas.,

## Validation Data



Human spleen tissue was stained with Podoplanin (ABT513) Antibody



Human tonsil tissue was stained with Podoplanin (ABT513) Antibody

## | Contact information

Orders: order@immunoway.com  
Support: tech@immunoway.com  
Telephone: 408-747-0189 (USA) 400-8787-807(China)  
Website: <http://www.immunoway.com>  
Address: 2200 Ringwood Ave San Jose, CA 95131 USA



Please scan the QR code to access additional product information:  
**Podoplanin (ABT513) IHC kit**

---

For Research Use Only. Not for Use in Diagnostic Procedures.

[Antibody](#) | [ELISA Kits](#) | [Protein](#) | [Reagents](#)