

TRAP (ABT239) IHC kit

CatalogNo: IHCM6106

Key Features

Host Species

- Mouse

Reactivity

- Human,

Applications

- IHC

Isotype

- IgG2a,Kappa

Recommended Dilution Ratios

Storage

Storage* 2°C to 8°C/1 year

Basic Information

Clonality Monoclonal

Clone Number ABT239

Immunogen Information

Immunogen Synthesized peptide derived from human TRAP AA range: 250-325

Specificity The antibody can specifically recognize human TRAP protein.

Target Information

Gene name ACP5

Protein Name Type 5 acid phosphatase;Acid phosphatase 5 tartrate resistant;Acid phosphatase 5, tartrate resistant;ACP5;EC 3.1.3.2;MGC117378;PPA5_HUMAN;serum band 5 tartrate-resistant acid phosphatase;SPENCDI;T5ap;Tartrate resistant acid ATPase;Tartrate resistant acid phosphatase type 5;Tartrate resistant acid phosphatase type 5 precursor;Tartrate-resistant acid ATPase;Tartrate-resistant acid phosphatase type 5;TR AP;TR-AP;TRACP 5;TRAP;TrATPase;Type 5 acid phosphatase

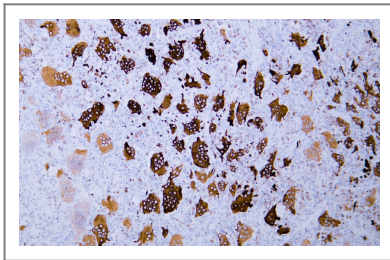
Organism	Gene ID	UniProt ID
Human	54;	P13686;
Mouse		Q05117;
Rat		P29288;

Cellular Localization Cytoplasmic

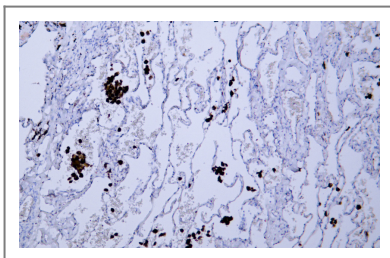
Tissue specificity Lung

Function Catalytic activity:A phosphate monoester + H(2)O = an alcohol + phosphate.,cofactor: Binds 2 iron ions per subunit.,Disease: This relatively minor intracellular isozyme of acid phosphatase can become the dominant isozyme in certain pathological states (Gaucher and Hodgkin diseases, the hairy cell, the B-cell, and the T-cell leukemias).,similarity: Belongs to the metallophosphoesterase superfamily. Purple acid phosphatase family.,subunit: Exists either as monomer or, after proteolytic processing, as a dimer of two chains linked by disulfide bond(s).

Validation Data



Human giant cell tumor tissue was stained with Anti-TRAP (ABT239) Antibody



Human lung tissue was stained with Anti-TRAP (ABT239) Antibody

Contact information

Orders: order@immunoway.com
Support: tech@immunoway.com
Telephone: 408-747-0189 (USA) 400-8787-807(China)
Website: http://www.immunoway.com
Address: 2200 Ringwood Ave San Jose, CA 95131 USA



Please scan the QR code
to access additional
product information:
**TRAP (ABT239) IHC
kit**

For Research Use Only. Not for Use in Diagnostic Procedures.

[Antibody](#) | [ELISA Kits](#) | [Protein](#) | [Reagents](#)