

## Synaptophysin (ABT533) IHC kit

CatalogNo: IHCM6105

### Key Features

#### Host Species

- Mouse

#### Reactivity

- Human, Mouse, Rat, Bovin,

#### Applications

- IHC

#### Isotype

- IgG1, Kappa

### Recommended Dilution Ratios

### Storage

**Storage\*** 2°C to 8°C/1 year

### Basic Information

**Clonality** Monoclonal

**Clone Number** ABT533

### Immunogen Information

**Immunogen** Synthesized peptide derived from human Synaptophysin AA range: 200-313

**Specificity** The antibody can specifically recognize human Synaptophysin protein.

### Target Information

**Gene name** SYP

**Protein Name** Major synaptic vesicle protein p38;MRX96;MRXSYP;Syn p38;Synaptophysin;Syp;SYPH;SYPH\_HUMAN;Synpl

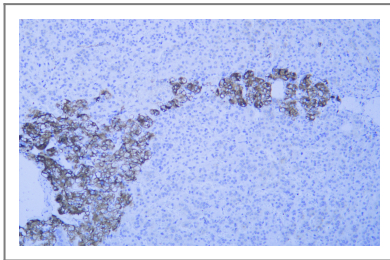
Organism	Gene ID	UniProt ID
Human	<a href="#">6855</a> ;	<a href="#">P08247</a> ;
Mouse		<a href="#">Q62277</a> ;
Rat		<a href="#">P07825</a> ;

**Cellular Localization** Cytoplasmic

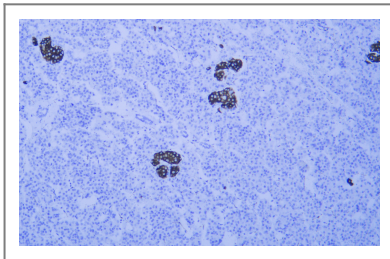
**Tissue specificity** Pancreas/ Colon

**Function** Domain:The calcium-binding activity is thought to be localized in the cytoplasmic tail of the protein.,Function:Possibly involved in structural functions as organizing other membrane components or in targeting the vesicles to the plasma membrane.,online information:Synaptophysin entry,PTM:Ubiquitinated; mediated by SIAH1 or SIAH2 and leading to its subsequent proteasomal degradation.,similarity:Belongs to the synaptophysin/synaptobrevin family.,similarity:Contains 1 MARVEL domain.,subunit:Homohexamer or homotetramer.,tissue specificity:Characteristic of a type of small (30-80 nm) neurosecretory vesicles, including presynaptic vesicles, but also vesicles of various neuroendocrine cells of both neuronal and epithelial phenotype.,

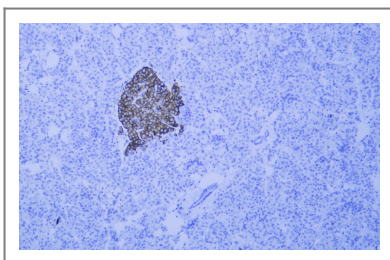
## Validation Data



Human adrenal gland tissue was stained with Anti-Synaptophysin (ABT533) Antibody



Human pancreas tissue was stained with Anti-Synaptophysin (ABT533) Antibody



Human pancreas tissue was stained with Anti-Synaptophysin (ABT533) Antibody

## | Contact information

Orders: order@immunoway.com  
Support: tech@immunoway.com  
Telephone: 408-747-0189 (USA) 400-8787-807(China)  
Website: <http://www.immunoway.com>  
Address: 2200 Ringwood Ave San Jose, CA 95131 USA



Please scan the QR code  
to access additional  
product information:  
**Synaptophysin  
(ABT533) IHC kit**

---

For Research Use Only. Not for Use in Diagnostic Procedures.

[Antibody](#) | [ELISA Kits](#) | [Protein](#) | [Reagents](#)