

PSA (ABT-PSA) IHC kit

CatalogNo: IHCM6091

Key Features

Host Species

- Mouse

Reactivity

- Human,

Applications

- IHC

Isotype

- IgG1,Kappa

Recommended Dilution Ratios

Storage

Storage* 2°C to 8°C/1 year

Basic Information

Clonality Monoclonal

Clone Number ABT-PSA

Immunogen Information

Immunogen Synthesized peptide derived from human Prostate-Specific Antigen(PSA) AA range: 100-200

Specificity The antibody can specifically recognize human PSA protein.

Target Information

Gene name KLK3 APS

Protein Name Prostate-specific antigen (PSA) (Gamma-seminoprotein) (Seminin) (Kallikrein-3) (P-30 antigen) (Semenogelase)

Organism

Human

Gene ID

[354;](#)

UniProt ID

[P07288;](#)

Cellular Localization

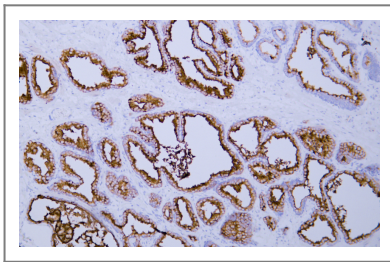
Cytoplasmic

Tissue specificity Leukocyte,PNS,Prostate,

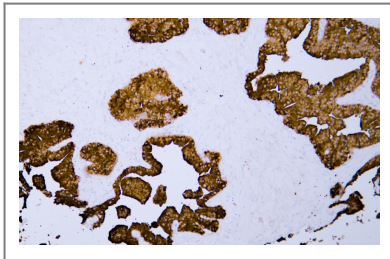
Function

Catalytic activity:Preferential cleavage: -Tyr-|Xaa-.,Function:Hydrolyzes semenogelin-1 thus leading to the liquefaction of the seminal coagulum.,online information:Prostate-specific antigen entry,similarity:Belongs to the peptidase S1 family.,similarity:Belongs to the peptidase S1 family. Kallikrein subfamily.,similarity:Contains 1 peptidase S1 domain.,

Validation Data



Human prostate tissue was stained with Anti-Prostate-Specific Antigen (ABT-PSA) Antibody



Human prostatic adenocarcinoma tissue was stained with Anti-Prostate-Specific Antigen (ABT-PSA) Antibody

Contact information

Orders: order@immunoway.com
Support: tech@immunoway.com
Telephone: 408-747-0189 (USA) 400-8787-807(China)
Website: <http://www.immunoway.com>
Address: 2200 Ringwood Ave San Jose, CA 95131 USA



Please scan the QR code to access additional product information:
PSA (ABT-PSA) IHC kit