

Prolactin (ABT-PRL) IHC kit

CatalogNo: IHCM6089

Key Features

Host Species

- Mouse

Reactivity

- Human,

Applications

- IHC

Isotype

- IgG1,Kappa

Recommended Dilution Ratios

Storage

Storage* 2°C to 8°C/1 year

Basic Information

Clonality Monoclonal

Clone Number ABT-PRL

Immunogen Information

Immunogen Synthesized peptide derived from human Prolactin AA range: 100-227

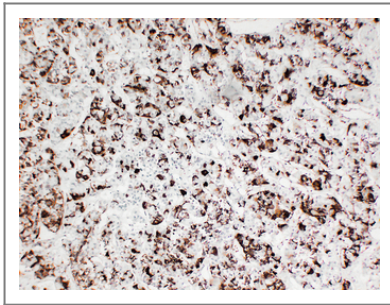
Specificity The antibody can specifically recognize human Prolactin protein.

Target Information

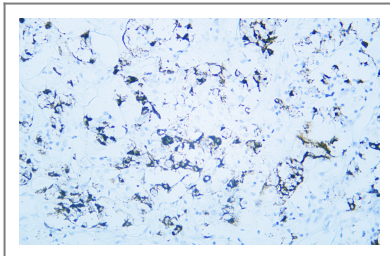
Gene name PRL

Protein Name	Prolactin (PRL)		
	Organism	Gene ID	UniProt ID
	Human	5617;	P01236;
Cellular Localization	Cytoplasmic		
Tissue specificity	Mammary gland,Pituitary,Testis,		
Function	Function:Prolactin acts primarily on the mammary gland by promoting lactation.,online information:Prolactin entry,similarity:Belongs to the somatotropin/prolactin family.,		

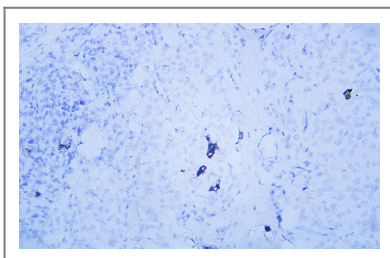
Validation Data



Human pituitary adenoma tissue was stained with Anti-Prolactin (ABT-PRL) Antibody



Human pituitary adenoma tissue was stained with Anti-Prolactin (ABT-PRL) Antibody



Human pituitary adenoma tissue was stained with Anti-Prolactin (ABT-PRL) Antibody

Contact information

Orders: order@immunoway.com
Support: tech@immunoway.com
Telephone: 408-747-0189 (USA) 400-8787-807(China)
Website: http://www.immunoway.com
Address: 2200 Ringwood Ave San Jose, CA 95131 USA



Please scan the QR code
to access additional
product information:
**Prolactin (ABT-PRL)
IHC kit**

For Research Use Only. Not for Use in Diagnostic Procedures.

[Antibody](#) | [ELISA Kits](#) | [Protein](#) | [Reagents](#)