

GST-Pi (ABT256) IHC kit

CatalogNo: IHCM6074

Key Features

Host Species

- Mouse

Reactivity

- Human, Mouse,

Applications

- IHC

Isotype

- IgG2b, Kappa

Recommended Dilution Ratios

Storage

Storage* 2°C to 8°C/1 year

Basic Information

Clonality Monoclonal

Clone Number ABT256

Immunogen Information

Immunogen Synthesized peptide derived from human GST-Pi AA range: 150-210

Specificity The antibody can specifically recognize human GST-Pi protein.

Target Information

Gene name GSTP1 FAES3 GST3

Protein Name Deafness;Deafness X-linked 7;DFN7;FAEES3;Fatty Acid Ethyl Ester Synthase III;Glutathione S Transferase 3;Glutathione S Transferase Pi;Glutathione S-transferase P;Glutathione S-transferase pi 1;GST class-pi;GST3;GSTP;Gstp1;GSTP1-1;GSTP1_HUMAN;PI;X linked 7

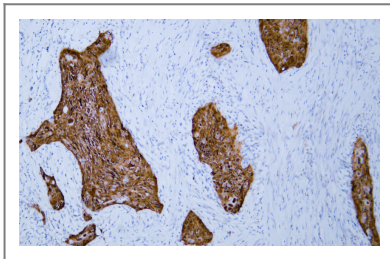
Organism	Gene ID	UniProt ID
Human	2950;	P09211;
Mouse		P19157;
Rat		P04906;

Cellular Localization Cytoplasmic

Tissue specificity Esophageal squamous cell carcinoma

Function Catalytic activity:RX + glutathione = HX + R-S-glutathione.,Function:Conjugation of reduced glutathione to a wide number of exogenous and endogenous hydrophobic electrophiles.,online information:The Singapore human mutation and polymorphism database,similarity:Belongs to the GST superfamily. Pi family.,similarity:Contains 1 GST C-terminal domain.,similarity:Contains 1 GST N-terminal domain.,subunit:Homodimer.,

Validation Data



Human esophageal squamous cell carcinoma tissue was stained with Anti-GST-Pi (ABT256) Antibody

Contact information

Orders: order@immunoway.com
Support: tech@immunoway.com
Telephone: 408-747-0189 (USA) 400-8787-807(China)
Website: <http://www.immunoway.com>
Address: 2200 Ringwood Ave San Jose, CA 95131 USA



Please scan the QR code to access additional product information:
GST-Pi (ABT256) IHC kit