

CD68 (ABT-CD68) IHC kit

CatalogNo: IHCM6022

Key Features

Host Species

- Mouse

Reactivity

- Human,

Applications

- IHC

Isotype

- IgG1,Kappa

Recommended Dilution Ratios

Storage

Storage* 2°C to 8°C/1 year

Basic Information

Clonality Monoclonal

Clone Number ABT-CD68

Immunogen Information

Immunogen Synthesized peptide derived from human CD68 AA range: 250-354

Specificity The antibody can specifically recognize human CD68 protein.

Target Information

Gene name CD68

Protein Name Macrosialin (Gp110) (CD antigen CD68)

Organism

Gene ID

UniProt ID

Human

[968](#);

[P34810](#);

Cellular Localization

Cytoplasmic, Membranous

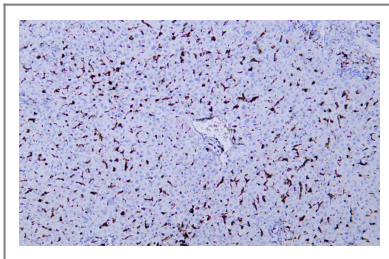
Tissue specificity

Highly expressed by blood monocytes and tissue macrophages. Also expressed in lymphocytes, fibroblasts and endothelial cells. Expressed in many tumor cell lines which could allow them to attach to selectins on vascular endothelium, facilitating their dissemination to secondary sites.

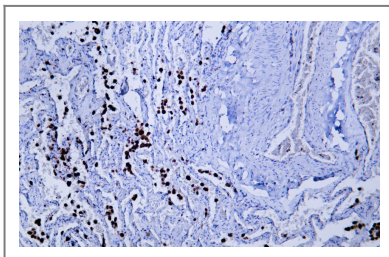
Function

Function:Could play a role in phagocytic activities of tissue macrophages, both in intracellular lysosomal metabolism and extracellular cell-cell and cell-pathogen interactions. Bind to tissue- and organ-specific lectins or selectins, allowing homing of macrophage subsets to particular sites. Rapid recirculation of CD68 from endosomes, lysosomes to the plasma membrane may allow macrophages to crawl over selectin bearing substrates or other cells.,PTM:N- and O-glycosylated.,similarity:Belongs to the LAMP family.,tissue specificity:Highly expressed by blood monocytes and tissue macrophages. Also expressed in many tumor cell lines which could allow them to attach to selectins on vascular endothelium, facilitating their dissemination to secondary sites.,

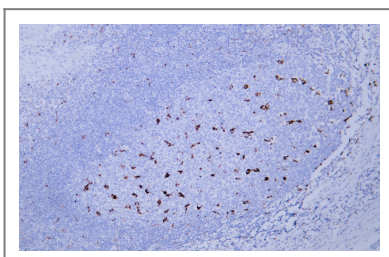
| Validation Data



Human liver tissue was stained with Anti-CD68 (ABT-CD68) Antibody



Human lung tissue was stained with Anti-CD68 (ABT-CD68) Antibody



Human tonsil tissue was stained with Anti-CD68 (ABT-CD68) Antibody

| Contact information

Orders: order@immunoway.com
Support: tech@immunoway.com
Telephone: 408-747-0189 (USA) 400-8787-807(China)
Website: <http://www.immunoway.com>
Address: 2200 Ringwood Ave San Jose, CA 95131 USA



Please scan the QR code
to access additional
product information:
CD68 (ABT-CD68)
IHC kit

For Research Use Only. Not for Use in Diagnostic Procedures.

[Antibody](#) | [ELISA Kits](#) | [Protein](#) | [Reagents](#)