

CD2 (ABT529) IHC kit

CatalogNo: IHCM6021

Key Features

Host Species

- Mouse

Reactivity

- Human,

Applications

- IHC

Isotype

- IgG2b,Kappa

Recommended Dilution Ratios

Storage

Storage* 2°C to 8°C/1 year

Basic Information

Clonality Monoclonal

Clone Number ABT529

Immunogen Information

Immunogen Synthesized peptide derived from human CD2 AA range: 1-100

Specificity The antibody can specifically recognize human CD2 protein.

Target Information

Gene name CD2 SRBC

Protein Name CD 2;CD2;CD2 antigen (p50), sheep red blood cell receptor;CD2 antigen;CD2 molecule;CD2_HUMAN;Erythrocyte receptor;FLJ46032;LFA-2;LFA-3 receptor;LFA2;LFA3 receptor;Ly-37;Lymphocyte function antigen 2;lymphocyte-function antigen-2;OTTHUMP00000024366;Rosette receptor;Sheep erythrocyte receptor;SRBC;T cell surface antigen CD2;T-cell surface antigen CD2;T-cell surface antigen T11/Leu-5;T-lymphocyte surface CD2 antigen;T11

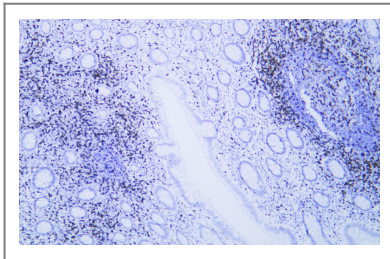
Organism	Gene ID	UniProt ID
Human	914;	P06729;
Mouse		P08920;
Rat		P08921;

Cellular Localization Membranous

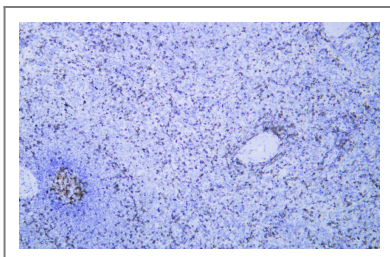
Tissue specificity Tonsil

Function Function:CD2 interacts with lymphocyte function-associated antigen (LFA-3) and CD48/BCM1 to mediate adhesion between T-cells and other cell types. CD2 is implicated in the triggering of T-cells, the cytoplasmic domain is implicated in the signaling function.,online information:CD2 entry,similarity:Contains 1 Ig-like C2-type (immunoglobulin-like) domain.,similarity:Contains 1 Ig-like V-type (immunoglobulin-like) domain.,subunit:Interacts with CD2AP (By similarity). Interacts with PSTPIP1.,

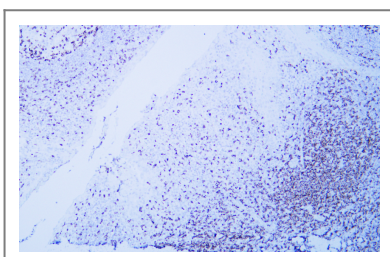
Validation Data



Human appendix tissue was stained with anti-CD2(ABT529) antibody.



Human spleen tissue was stained with anti-CD2(ABT529) antibody.



Human tonsil tissue was stained with anti-CD2(ABT529) antibody.

| Contact information

Orders: order@immunoway.com
Support: tech@immunoway.com
Telephone: 877-594-3616 (Toll Free), 408-747-0185
Website: <http://www.immunoway.com>
Address: 2200 Ringwood Ave San Jose, CA 95131 USA



Please scan the QR code
to access additional
product information:
**CD2 (ABT529) IHC
kit**

For Research Use Only. Not for Use in Diagnostic Procedures.

[Antibody](#) | [ELISA Kits](#) | [Protein](#) | [Reagents](#)