

## CD23 (ABT-CD23) IHC kit

CatalogNo: IHCM6014

### Key Features

#### Host Species

- Mouse

#### Reactivity

- Human,

#### Applications

- IHC

#### Isotype

- IgG1,Kappa

### Recommended Dilution Ratios

### Storage

**Storage\*** 2°C to 8°C/1 year

### Basic Information

**Clonality** Monoclonal

**Clone Number** ABT-CD23

### Immunogen Information

**Immunogen** Synthesized peptide derived from human CD23 AA range: 200-321

**Specificity** The antibody can specifically recognize human CD23 protein.

### Target Information

**Gene name** FCER2 CD23A CLEC4J FCE2 IGEBF

**Protein Name** Low affinity immunoglobulin epsilon Fc receptor (BLAST-2) (C-type lectin domain family 4 member J) (Fc-epsilon-RII) (Immunoglobulin E-binding factor) (Lymphocyte IgE receptor) (CD antigen CD23) [Cleaved into: Low affinity immunoglobulin epsilon Fc receptor membrane-bound form; Low affinity immunoglobulin epsilon Fc receptor soluble form]

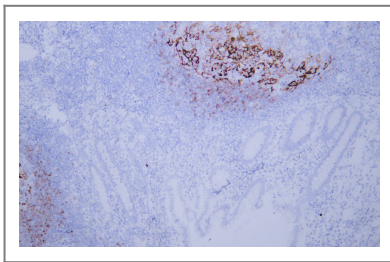
Organism	Gene ID	UniProt ID
Human	<a href="#">2208;</a>	<a href="#">P06734;</a>

**Cellular Localization** Membranous

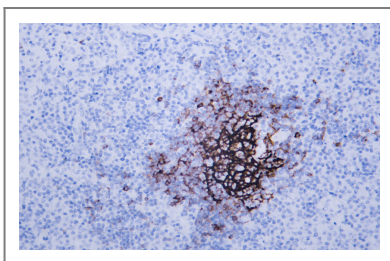
**Tissue specificity** B-cell,Blood,

**Function** Function:This receptor has essential roles in the regulation of IgE production and in the differentiation of B-cells (it is a B-cell-specific antigen).,miscellaneous:There are two kinds of Fc receptors for IgE, which differ in both structure and Function: high affinity receptors on basophils and mast cells and low affinity receptors on lymphocytes and monocytes.,online information:CD23,PTM:N- and O-glycosylated.,similarity:Contains 1 C-type lectin domain.,subcellular location:Also exists as a soluble excreted form.,

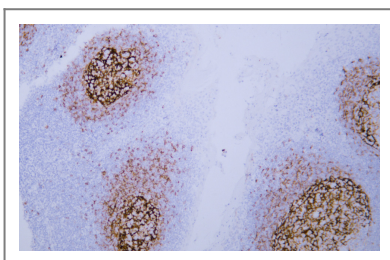
## Validation Data



Human appendix tissue was stained with anti-CD23(ABT-CD23) antibody.



Human diffuse large B-cell lymphoma tissue was stained with Anti-CD23 (ABT-CD23) Antibody



Human tonsil tissue was stained with anti-CD23(ABT-CD23) antibody.

## Contact information

Orders: order@immunoway.com  
Support: tech@immunoway.com  
Telephone: 408-747-0189 (USA) 400-8787-807(China)  
Website: http://www.immunoway.com  
Address: 2200 Ringwood Ave San Jose, CA 95131 USA



Please scan the QR code  
to access additional  
product information:  
**CD23 (ABT-CD23)**  
**IHC kit**

---

For Research Use Only. Not for Use in Diagnostic Procedures.

[Antibody](#) | [ELISA Kits](#) | [Protein](#) | [Reagents](#)