

Adrenocorticotropin(ACTH) (ABT-ACTH) IHC kit

CatalogNo: IHCM6001

Key Features

Host Species

- Mouse

Reactivity

- Human,

Applications

- IHC

Isotype

- IgG1,Kappa

Recommended Dilution Ratios

Storage

Storage* 2°C to 8°C/1 year

Basic Information

Clonality Monoclonal

Clone Number ABT-ACTH

Immunogen Information

Immunogen Synthesized peptide derived from human Adrenocorticotropin(ACTH) AA range: 100-200

Specificity The antibody can specifically recognize human ACTH protein.

Target Information

Gene name POMC

Protein Name Pro-opiomelanocortin (POMC) (Corticotropin-lipotropin) [Cleaved into: NPP; Melanotropin gamma (Gamma-MSH); Potential peptide; Corticotropin (Adrenocorticotrophic hormone) (ACTH); Melanotropin alpha (Alpha-MSH); Corticotropin-like intermediary peptide (CLIP); Lipotropin beta (Beta-LPH); Lipotropin gamma (Gamma-LPH); Melanotropin beta (Beta-MSH); Beta-endorphin; Met-enkephalin]

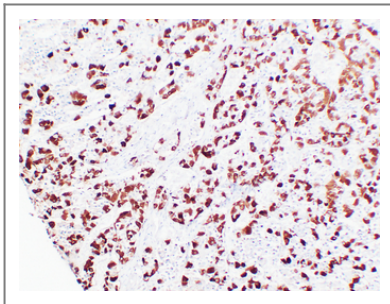
| Organism | Gene ID | UniProt ID |
|----------|------------------------|--------------------------|
| Human | 5443 ; | P01189 ; |

Cellular Localization Cytoplasmic

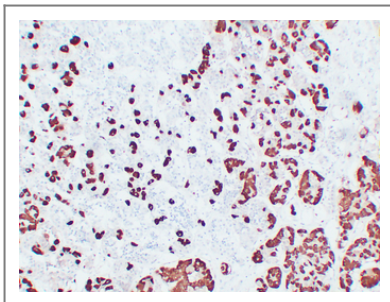
Tissue specificity ACTH and MSH are produced by the pituitary gland.

Function Disease:Defects in POMC are the cause of pro-opiomelanocortin deficiency [MIM:609734]. Affected individuals present early-onset obesity, adrenal insufficiency and red hair.,Disease:Defects in POMC may be associated with susceptibility to obesity [MIM:601665].,Function:ACTH stimulates the adrenal glands to release cortisol.,Function:Beta-endorphin and Met-enkephalin are endogenous opiates.,Function:MSH (melanocyte-stimulating hormone) increases the pigmentation of skin by increasing melanin production in melanocytes.,online information:Melanocyte-stimulating hormone entry,PTM:O-glycosylated; reducing sugar is probably N-acetylgalactosamine.,PTM:Specific enzymatic cleavages at paired basic residues yield the different active peptides.,similarity:Belongs to the POMC family.,tissue specificity:ACTH and MSH are produced by the pituitary gland.,

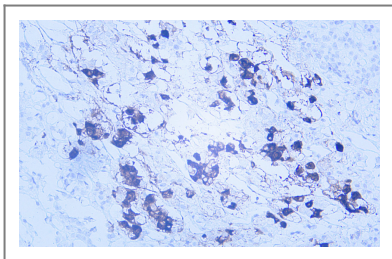
Validation Data



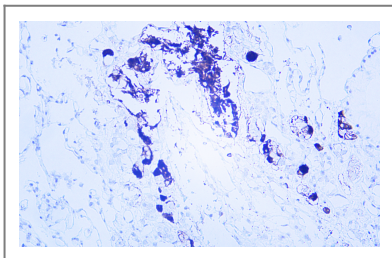
Human pituitary tissue was stained with anti-ACTH(ABT-ACTH) antibody.



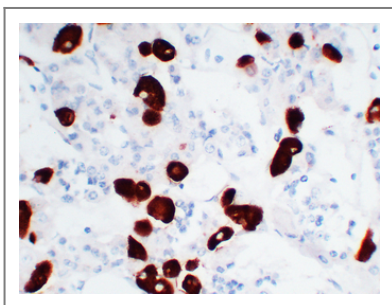
Human pituitary adenoma tissue was stained with anti-ACTH(ABT-ACTH) antibody.



Human pituitary adenoma tissue was stained with anti-ACTH(ABT-ACTH) antibody.



Human pituitary adenoma tissue was stained with anti-ACTH(ABT-ACTH) antibody.



Human pituitary adenoma tissue was stained with anti-ACTH(ABT-ACTH) antibody.

Contact information

Orders: order@immunoway.com
Support: tech@immunoway.com
Telephone: 408-747-0189 (USA) 400-8787-807(China)
Website: <http://www.immunoway.com>
Address: 2200 Ringwood Ave San Jose, CA 95131 USA



Please scan the QR code to access additional product information:
**Adrenocorticotropin(ACTH)
(ABT-ACTH) IHC kit**

For Research Use Only. Not for Use in Diagnostic Procedures.

[Antibody](#) | [ELISA Kits](#) | [Protein](#) | [Reagents](#)