

## Amylin Polyclonal Antibody

<b>Catalog No :</b>	YT0225
<b>Reactivity :</b>	Human;Rat;Mouse;
<b>Applications :</b>	WB;IHC;IF;ELISA
<b>Target :</b>	Amylin
<b>Fields :</b>	>>Neuroactive ligand-receptor interaction;>>Maturity onset diabetes of the young
<b>Gene Name :</b>	IAPP
<b>Protein Name :</b>	Islet amyloid polypeptide
<b>Human Gene Id :</b>	3375
<b>Human Swiss Prot No :</b>	P10997
<b>Mouse Swiss Prot No :</b>	P12968
<b>Immunogen :</b>	The antiserum was produced against synthesized peptide derived from human Amylin. AA range:1-50
<b>Specificity :</b>	Amylin Polyclonal Antibody detects endogenous levels of Amylin protein.
<b>Formulation :</b>	Liquid in PBS containing 50% glycerol, 0.5% BSA and 0.02% sodium azide.
<b>Source :</b>	Polyclonal, Rabbit,IgG
<b>Dilution :</b>	WB 1:500 - 1:2000. IHC 1:100 - 1:300. IF 1:200 - 1:1000. ELISA: 1:10000. Not yet tested in other applications.
<b>Purification :</b>	The antibody was affinity-purified from rabbit antiserum by affinity-chromatography using epitope-specific immunogen.
<b>Concentration :</b>	1 mg/ml

**Storage Stability :** -15°C to -25°C/1 year(Do not lower than -25°C)

**Observed Band :** 25kD

**Cell Pathway :** Maturity onset diabetes of the young;

**Background :** islet amyloid polypeptide(IAPP) Homo sapiens This gene encodes a member of the calcitonin family of peptide hormones. This hormone is released from pancreatic beta cells following food intake to regulate blood glucose levels and act as a satiation signal. Human patients with type 1 and advanced type 2 diabetes exhibit reduced levels of the encoded hormone in blood and pancreas. This protein also exhibits a bactericidal, antimicrobial activity. [provided by RefSeq, Jul 2016],

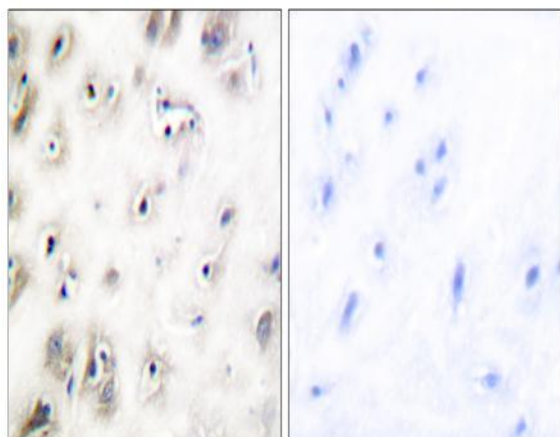
**Function :** disease:IAPP is the peptide subunit of amyloid found in pancreatic islets of type 2 diabetic patients and in insulinomas.,function:Selectively inhibits insulin-stimulated glucose utilization and glycogen deposition in muscle, while not affecting adipocyte glucose metabolism.,online information:Amylin entry,similarity:Belongs to the calcitonin family.,

**Subcellular Location :** Secreted .

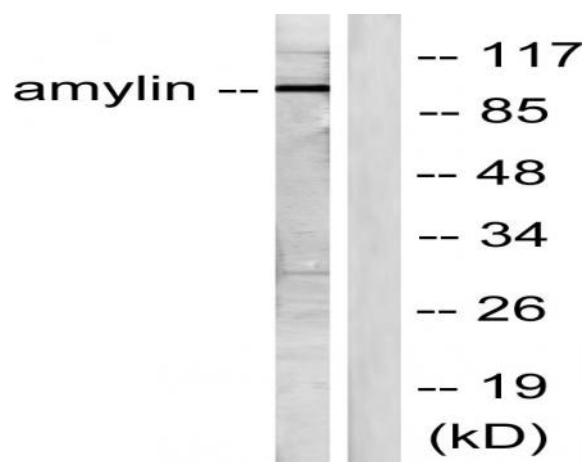
## Products Images



Western Blot analysis of various cells using Amylin Polyclonal Antibody diluted at 1:1000



Immunohistochemistry analysis of paraffin-embedded human brain tissue, using Amylin Antibody. The picture on the right is blocked with the synthesized peptide.



Western blot analysis of lysates from HeLa cells, treated with EGF 200ng/ml 30', using Amylin Antibody. The lane on the right is blocked with the synthesized peptide.