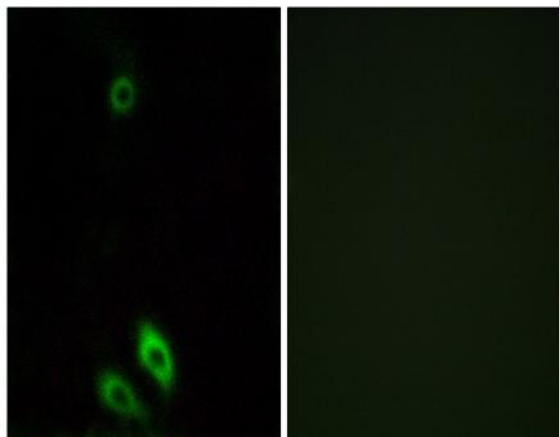


AKR1CL1 Polyclonal Antibody

Catalog No :	YT0170
Reactivity :	Human;Rat;Mouse;
Applications :	IF;ELISA
Target :	AKR1CL1
Gene Name :	AKR1CL1
Protein Name :	Aldo-keto reductase family 1 member C-like protein 1
Human Gene Id :	340811
Human Swiss Prot No :	Q5T2L2
Immunogen :	The antiserum was produced against synthesized peptide derived from human AKR1CL1. AA range:80-129
Specificity :	AKR1CL1 Polyclonal Antibody detects endogenous levels of AKR1CL1 protein.
Formulation :	Liquid in PBS containing 50% glycerol, 0.5% BSA and 0.02% sodium azide.
Source :	Polyclonal, Rabbit,IgG
Dilution :	IF 1:200 - 1:1000. ELISA: 1:40000. Not yet tested in other applications.
Purification :	The antibody was affinity-purified from rabbit antiserum by affinity-chromatography using epitope-specific immunogen.
Concentration :	1 mg/ml
Storage Stability :	-15°C to -25°C/1 year(Do not lower than -25°C)
Observed Band :	37kD
Background :	similarity:Belongs to the aldo/keto reductase family.,

Function :	<u>similarity:Belongs to the aldo/keto reductase family.,</u>
Subcellular Location :	<u>Cytoplasm .</u>
Expression :	<u>Testis,</u>

Products Images



Immunofluorescence analysis of A549 cells, using AKR1CL1 Antibody. The picture on the right is blocked with the synthesized peptide.