

## AGXT2L2 Polyclonal Antibody

<b>Catalog No :</b>	YT0144
<b>Reactivity :</b>	Human;Mouse;Rat
<b>Applications :</b>	WB;IHC;IF;ELISA
<b>Target :</b>	AGXT2L2
<b>Fields :</b>	>>Lysine degradation;>>Metabolic pathways
<b>Gene Name :</b>	AGXT2L2
<b>Protein Name :</b>	5-phosphohydroxy-L-lysine phospho-lyase
<b>Human Gene Id :</b>	85007
<b>Human Swiss Prot No :</b>	Q8IUZ5
<b>Mouse Gene Id :</b>	72947
<b>Mouse Swiss Prot No :</b>	Q8R1K4
<b>Immunogen :</b>	The antiserum was produced against synthesized peptide derived from human AGXT2L2. AA range:341-390
<b>Specificity :</b>	AGXT2L2 Polyclonal Antibody detects endogenous levels of AGXT2L2 protein.
<b>Formulation :</b>	Liquid in PBS containing 50% glycerol, 0.5% BSA and 0.02% sodium azide.
<b>Source :</b>	Polyclonal, Rabbit,IgG
<b>Dilution :</b>	WB 1:500 - 1:2000. IHC 1:100 - 1:300. ELISA: 1:10000.. IF 1:50-200
<b>Purification :</b>	The antibody was affinity-purified from rabbit antiserum by affinity-chromatography using epitope-specific immunogen.
<b>Concentration :</b>	1 mg/ml

**Storage Stability :** -15°C to -25°C/1 year(Do not lower than -25°C)

**Observed Band :** 50kD

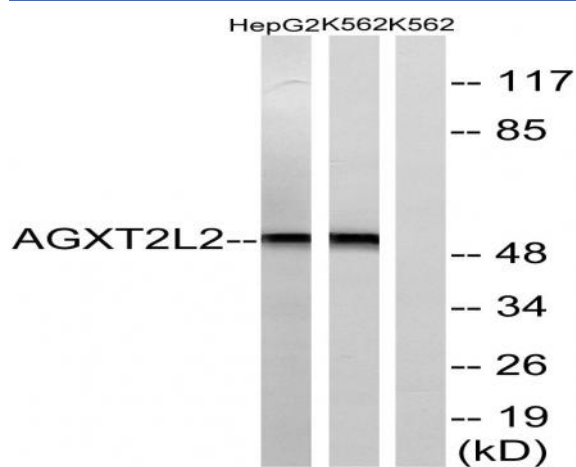
**Background :** 5-phosphohydroxy-L-lysine phospho-lyase(PHYKPL) Homo sapiens This is a nuclear gene encoding a mitochondrial enzyme that catalyzes the conversion of 5-phosphonoxy-L-lysine to ammonia, inorganic phosphate, and 2-aminoadipate semialdehyde. Mutations in this gene may cause phosphohydroxylysinuria. Alternative splicing results in multiple transcript variants. [provided by RefSeq, May 2013],

**Function :** cofactor:Pyridoxal phosphate .,similarity:Belongs to the class-III pyridoxal-phosphate-dependent aminotransferase family.,subunit:Homotetramer.,

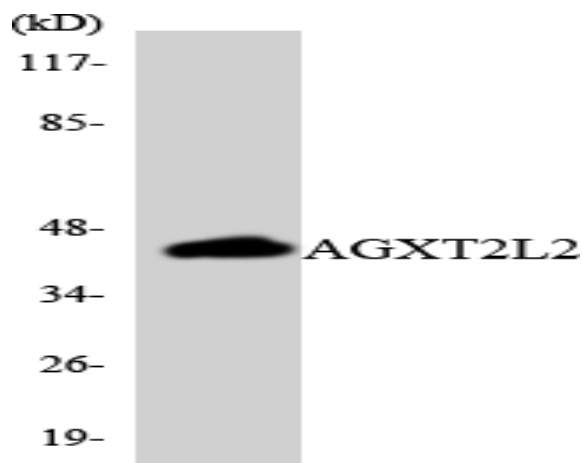
**Subcellular Location :** Mitochondrion .

**Expression :** Brain,Muscle,Pancreas,Stomach,

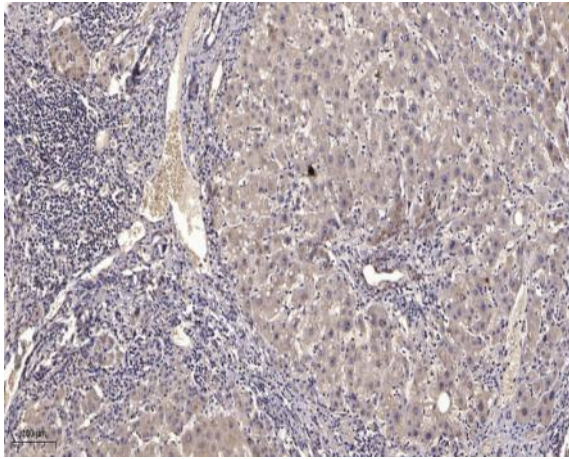
## Products Images



Western blot analysis of lysates from K562 and HepG2 cells, using AGXT2L2 Antibody. The lane on the right is blocked with the synthesized peptide.



Western blot analysis of the lysates from HUVEC cells using AGXT2L2 antibody.



Immunohistochemical analysis of paraffin-embedded human liver cancer. 1, Antibody was diluted at 1:200(4° overnight). 2, Tris-EDTA,pH9.0 was used for antigen retrieval. 3,Secondary antibody was diluted at 1:200(room temperature, 45min).