

ADAM32 Polyclonal Antibody

Catalog No :	YT0110
Reactivity :	Human;Rat;Mouse;
Applications :	WB;ELISA
Target :	ADAM32
Gene Name :	ADAM32
Protein Name :	Disintegrin and metalloproteinase domain-containing protein 32
Human Gene Id :	203102
Human Swiss Prot No :	Q8TC27
Mouse Swiss Prot No :	Q8K410
Immunogen :	Synthesized peptide derived from ADAM32 . at AA range: 460-540
Specificity :	ADAM32 Polyclonal Antibody detects endogenous levels of ADAM32 protein.
Formulation :	Liquid in PBS containing 50% glycerol, 0.5% BSA and 0.02% sodium azide.
Source :	Polyclonal, Rabbit,IgG
Dilution :	WB 1:500 - 1:2000. ELISA: 1:40000. Not yet tested in other applications.
Purification :	The antibody was affinity-purified from rabbit antiserum by affinity-chromatography using epitope-specific immunogen.
Concentration :	1 mg/ml
Storage Stability :	-15°C to -25°C/1 year(Do not lower than -25°C)
Observed Band :	87kD

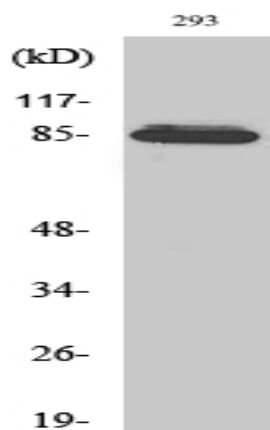
Background : ADAM metallopeptidase domain 32(ADAM32) Homo sapiens This gene encodes a member of the disintegrin family of membrane-anchored proteins that play a role in diverse biological processes such as brain development, fertilization, tumor development and inflammation. This gene is predominantly expressed in the testis. The encoded protein undergoes proteolytic processing to generate a mature polypeptide comprised of an metalloprotease, disintegrin and epidermal growth factor-like domains. This gene is located in a cluster of other disintegrin and metallopeptidase family genes on chromosome 8. Alternative splicing results in multiple transcript variants encoding different isoforms. [provided by RefSeq, Sep 2015],

Function : function:May play a role in sperm development and fertilization This is a non-catalytic metalloprotease-like protein.,similarity:Contains 1 disintegrin domain.,similarity:Contains 1 EGF-like domain.,similarity:Contains 1 peptidase M12B domain.,tissue specificity:Testis specific.,

Subcellular Location : Membrane ; Single-pass type I membrane protein .

Expression : Testis specific.

Products Images



Western Blot analysis of various cells using ADAM32 Polyclonal Antibody diluted at 1:1000