

ApoF Polyclonal Antibody

Catalog No :	YT0276
Reactivity :	Human;Rat;Mouse;
Applications :	WB;ELISA
Target :	ApoF
Gene Name :	APOF
Protein Name :	Apolipoprotein F
Human Gene Id :	319
Human Swiss Prot No :	Q13790
Mouse Swiss Prot No :	Q91V80
Immunogen :	The antiserum was produced against synthesized peptide derived from human APOF. AA range:221-270
Specificity :	ApoF Polyclonal Antibody detects endogenous levels of ApoF protein.
Formulation :	Liquid in PBS containing 50% glycerol, 0.5% BSA and 0.02% sodium azide.
Source :	Polyclonal, Rabbit,IgG
Dilution :	WB 1:500 - 1:2000. ELISA: 1:40000. Not yet tested in other applications.
Purification :	The antibody was affinity-purified from rabbit antiserum by affinity-chromatography using epitope-specific immunogen.
Concentration :	1 mg/ml
Storage Stability :	-15°C to -25°C/1 year(Do not lower than -25°C)
Observed Band :	38kD

Background :

The product of this gene is one of the minor apolipoproteins found in plasma. This protein forms complexes with lipoproteins and may be involved in transport and/or esterification of cholesterol. [provided by RefSeq, Jul 2008],

Function :

function:Minor apolipoprotein that associates with LDL. Inhibits cholesteryl ester transfer protein (CETP) activity and appears to be an important regulator of cholesterol transport. Also associates to a lesser degree with VLDL, Apo-AI and Apo-AII.,tissue specificity:Liver. Secreted in plasma.,

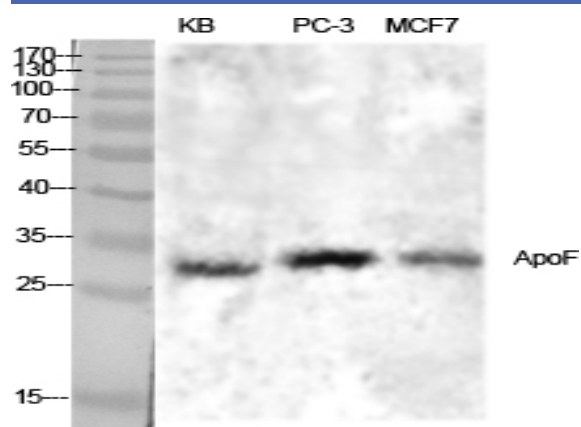
Subcellular Location :

Secreted .

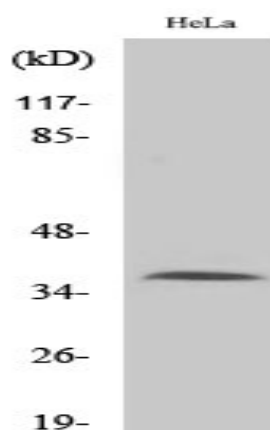
Expression :

Expressed by the liver and secreted in plasma.

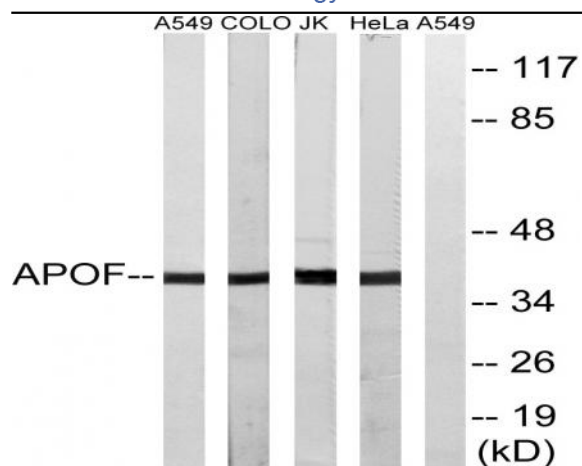
Products Images



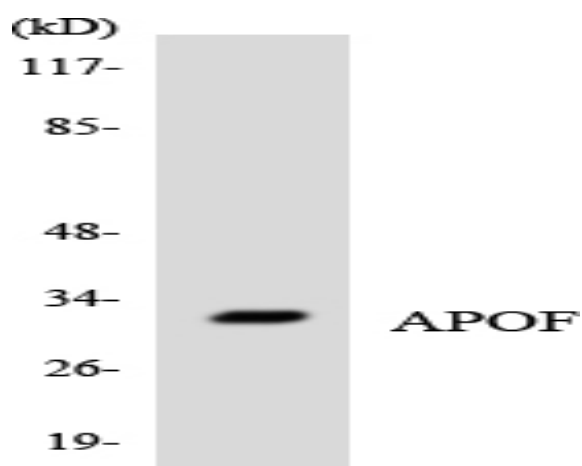
Western Blot analysis of various cells using ApoF Polyclonal Antibody diluted at 1:1000



Western Blot analysis of A549 cells using ApoF Polyclonal Antibody diluted at 1:1000



Western blot analysis of lysates from HeLa, Jurkat, COLO, and A549 cells, using APOF Antibody. The lane on the right is blocked with the synthesized peptide.



Western blot analysis of the lysates from COLO205 cells using APOF antibody.