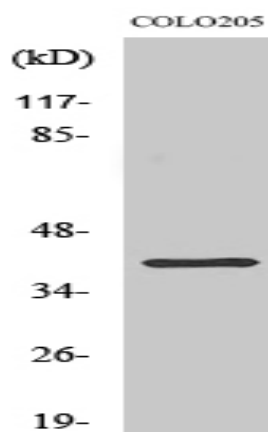


ABHD6 Polyclonal Antibody

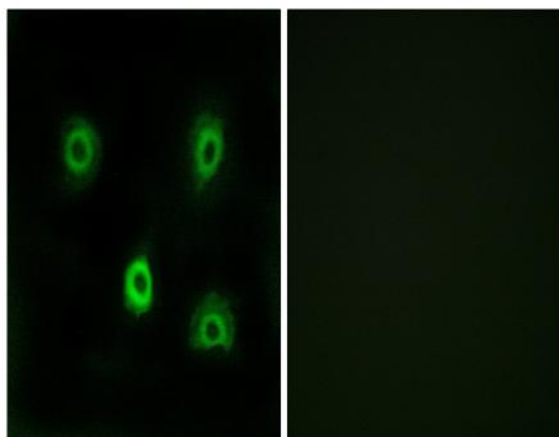
Catalog No :	YT0061
Reactivity :	Human;Mouse;Rat
Applications :	WB;IF;ELISA
Target :	ABHD6
Fields :	>>Retrograde endocannabinoid signaling
Gene Name :	ABHD6
Protein Name :	Monoacylglycerol lipase ABHD6
Human Gene Id :	57406
Human Swiss Prot No :	Q9BV23
Mouse Gene Id :	66082
Mouse Swiss Prot No :	Q8R2Y0
Rat Gene Id :	305795
Rat Swiss Prot No :	Q5XI64
Immunogen :	The antiserum was produced against synthesized peptide derived from human ABHD6. AA range:231-280
Specificity :	ABHD6 Polyclonal Antibody detects endogenous levels of ABHD6 protein.
Formulation :	Liquid in PBS containing 50% glycerol, 0.5% BSA and 0.02% sodium azide.
Source :	Polyclonal, Rabbit,IgG
Dilution :	WB 1:500 - 1:2000. IF 1:200 - 1:1000. ELISA: 1:20000. Not yet tested in other applications.

Purification :	The antibody was affinity-purified from rabbit antiserum by affinity-chromatography using epitope-specific immunogen.
Concentration :	1 mg/ml
Storage Stability :	-15°C to -25°C/1 year(Do not lower than -25°C)
Observed Band :	38kD
Background :	catalytic activity:Hydrolyzes glycerol monoesters of long-chain fatty acids.,function:Has 2-arachidonoylglycerol hydrolase activity (By similarity). May be a regulator of endocannabinoid signaling pathways.,similarity:Belongs to the AB hydrolase superfamily.,
Function :	catalytic activity:Hydrolyzes glycerol monoesters of long-chain fatty acids.,function:Has 2-arachidonoylglycerol hydrolase activity (By similarity). May be a regulator of endocannabinoid signaling pathways.,similarity:Belongs to the AB hydrolase superfamily.,
Subcellular Location :	Late endosome membrane ; Single-pass type II membrane protein . Lysosome membrane ; Single-pass type II membrane protein . Mitochondrion membrane ; Single-pass type II membrane protein .
Expression :	Cerebellum,Hepatoma,Lung,Pituitary,Skin,

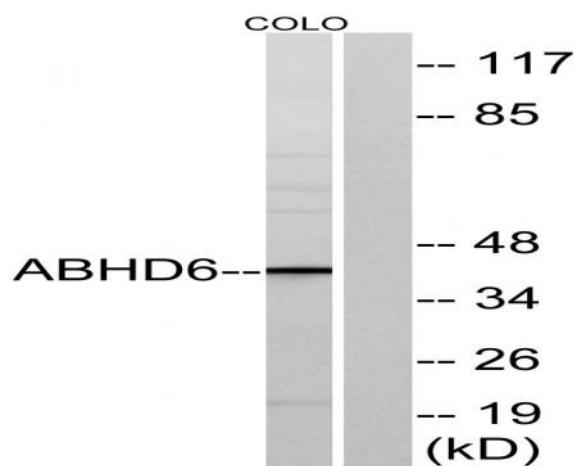
Products Images



Western Blot analysis of various cells using ABHD6 Polyclonal Antibody



Immunofluorescence analysis of A549 cells, using ABHD6 Antibody. The picture on the right is blocked with the synthesized peptide.



Western blot analysis of lysates from COLO cells, using ABHD6 Antibody. The lane on the right is blocked with the synthesized peptide.