

**ABHD14A Polyclonal Antibody**

<b>Catalog No :</b>	YT0057
<b>Reactivity :</b>	Human;Mouse;Rat
<b>Applications :</b>	WB;ELISA
<b>Target :</b>	ABHD14A
<b>Gene Name :</b>	ABHD14A
<b>Protein Name :</b>	Abhydrolase domain-containing protein 14A
<b>Human Gene Id :</b>	25864
<b>Human Swiss Prot No :</b>	Q9BUJ0
<b>Mouse Swiss Prot No :</b>	Q922Q6
<b>Rat Gene Id :</b>	300982
<b>Rat Swiss Prot No :</b>	Q5I0C4
<b>Immunogen :</b>	The antiserum was produced against synthesized peptide derived from human ABHD14A. AA range:201-250
<b>Specificity :</b>	ABHD14A Polyclonal Antibody detects endogenous levels of ABHD14A protein.
<b>Formulation :</b>	Liquid in PBS containing 50% glycerol, 0.5% BSA and 0.02% sodium azide.
<b>Source :</b>	Polyclonal, Rabbit,IgG
<b>Dilution :</b>	WB 1:500 - 1:2000. ELISA: 1:40000. Not yet tested in other applications.
<b>Purification :</b>	The antibody was affinity-purified from rabbit antiserum by affinity-chromatography using epitope-specific immunogen.
<b>Concentration :</b>	1 mg/ml

**Storage Stability :** -15°C to -25°C/1 year(Do not lower than -25°C)

**Observed Band :** 30kD

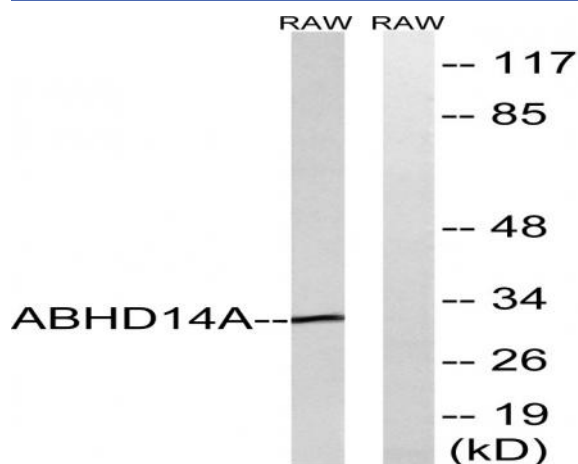
**Background :** caution:It is uncertain whether Met-1 or Met-30 is the initiator.,function:Possible role in granule neuron development.,similarity:Belongs to the AB hydrolase superfamily. ABHD14 family.,

**Function :** caution:It is uncertain whether Met-1 or Met-30 is the initiator.,function:Possible role in granule neuron development.,similarity:Belongs to the AB hydrolase superfamily. ABHD14 family.,

**Subcellular Location :** Cytoplasm . Membrane ; Single-pass type II membrane protein .

**Expression :** Brain,Lymph,

## Products Images



Western blot analysis of lysates from RAW264.7 cells, using ABHD14A Antibody. The lane on the right is blocked with the synthesized peptide.