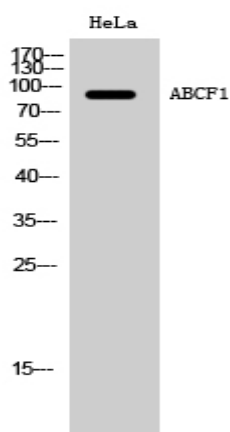


ABCF1 Polyclonal Antibody

Catalog No :	YT0051
Reactivity :	Human;Mouse;Rat
Applications :	WB;ELISA
Target :	ABCF1
Gene Name :	ABCF1
Protein Name :	ATP-binding cassette sub-family F member 1
Human Gene Id :	23
Human Swiss Prot No :	Q8NE71
Mouse Gene Id :	224742
Mouse Swiss Prot No :	Q6P542
Rat Gene Id :	85493
Rat Swiss Prot No :	Q6MG08
Immunogen :	Synthesized peptide derived from ABCF1 . at AA range: 760-840
Specificity :	ABCF1 Polyclonal Antibody detects endogenous levels of ABCF1 protein.
Formulation :	Liquid in PBS containing 50% glycerol, 0.5% BSA and 0.02% sodium azide.
Source :	Polyclonal, Rabbit,IgG
Dilution :	WB 1:500 - 1:2000. ELISA: 1:10000. Not yet tested in other applications.
Purification :	The antibody was affinity-purified from rabbit antiserum by affinity-chromatography using epitope-specific immunogen.

Concentration :	1 mg/ml
Storage Stability :	-15°C to -25°C/1 year(Do not lower than -25°C)
Observed Band :	95kD
Background :	The protein encoded by this gene is a member of the superfamily of ATP-binding cassette (ABC) transporters. ABC proteins transport various molecules across extra- and intra-cellular membranes. ABC genes are divided into seven distinct subfamilies (ABC1, MDR/TAP, MRP, ALD, OABP, GCN20, White). This protein is a member of the GCN20 subfamily. Unlike other members of the superfamily, this protein lacks the transmembrane domains which are characteristic of most ABC transporters. This protein may be regulated by tumor necrosis factor-alpha and play a role in enhancement of protein synthesis and the inflammation process. [provided by RefSeq, Jul 2008],
Function :	function:May function in mRNA translation.,induction:By TNF (in cultured synoviocytes).,PTM:Phosphorylated upon DNA damage, probably by ATM or ATR.,similarity:Belongs to the ABC transporter family.,similarity:Belongs to the ABC transporter family. EF3 subfamily.,similarity:Contains 2 ABC transporter domains.,subunit:Interacts with eukaryotic initiation factor 2 (eIF2). Associates with the ribosomes.,tissue specificity:Ubiquitous.,
Subcellular Location :	[Isoform 2]: Cytoplasm . Nucleus, nucleoplasm . Nucleus envelope .
Expression :	Ubiquitous.

Products Images



Western Blot analysis of HeLa cells using ABCF1 Polyclonal Antibody