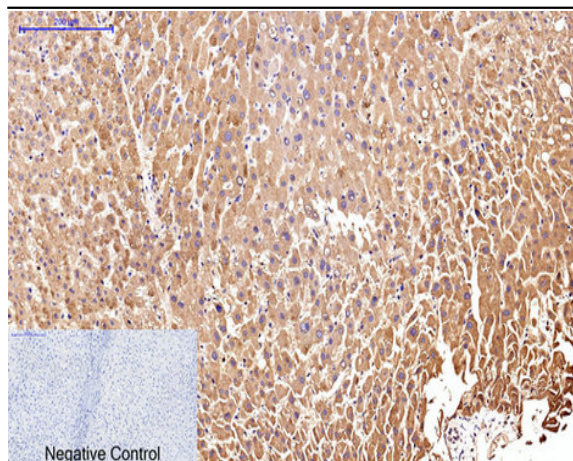


CD25 Monoclonal Antibody(Q22)

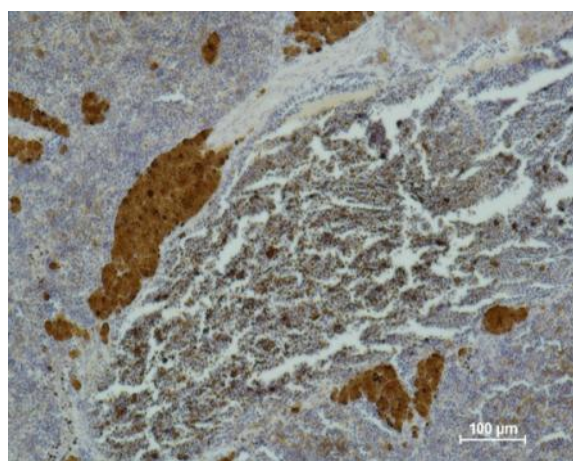
Catalog No :	YM3107
Reactivity :	Human
Applications :	IHC;IF
Target :	CD25
Fields :	>>Cytokine-cytokine receptor interaction;>>Viral protein interaction with cytokine and cytokine receptor;>>Endocytosis;>>PI3K-Akt signaling pathway;>>JAK-STAT signaling pathway;>>Hematopoietic cell lineage;>>Th1 and Th2 cell differentiation;>>Th17 cell differentiation;>>Measles;>>Human T-cell leukemia virus 1 infection;>>Pathways in cancer
Gene Name :	IL2RA
Protein Name :	Interleukin-2 receptor subunit alpha
Human Gene Id :	3559
Human Swiss Prot No :	P01589
Mouse Gene Id :	16184
Mouse Swiss Prot No :	P01590
Rat Gene Id :	25704
Rat Swiss Prot No :	P26897
Immunogen :	Synthetic Peptide of CD25
Specificity :	The antibody detects endogenous human CD25 protein.
Formulation :	PBS, pH 7.4, containing 0.5%BSA, 0.02% sodium azide as Preservative and 50% Glycerol.
Source :	Monoclonal, Mouse

Dilution :	IHC 1:200. IF 1:50-200
Purification :	The antibody was affinity-purified from mouse ascites by affinity-chromatography using specific immunogen.
Storage Stability :	-15°C to -25°C/1 year(Do not lower than -25°C)
Molecularweight :	31kD
Cell Pathway :	Cytokine-cytokine receptor interaction;Endocytosis;Jak_STAT;Hematopoietic cell lineage;
Background :	<p>The interleukin 2 (IL2) receptor alpha (IL2RA) and beta (IL2RB) chains, together with the common gamma chain (IL2RG), constitute the high-affinity IL2 receptor. Homodimeric alpha chains (IL2RA) result in low-affinity receptor, while homodimeric beta (IL2RB) chains produce a medium-affinity receptor. Normally an integral-membrane protein, soluble IL2RA has been isolated and determined to result from extracellular proteolysis. Alternately-spliced IL2RA mRNAs have been isolated, but the significance of each is presently unknown. Mutations in this gene are associated with interleukin 2 receptor alpha deficiency.[provided by RefSeq, Nov 2009],</p>
Function :	<p>disease:Genetic variations in IL2RA are associated with susceptibility to insulin-dependent diabetes mellitus type 10 (IDDM10) [MIM:601942].,function:Receptor for interleukin-2.,online information:IL2RA mutation db,similarity:Contains 2 Sushi (CCP/SCR) domains.,subunit:Non-covalent dimer of an alpha and a beta chains. IL2R exists in 3 different forms: a high affinity dimer, an intermediate affinity monomer (beta chain), and a low affinity monomer (alpha chain). The high and intermediate affinity forms also associate with a gamma chain.,</p>
Subcellular Location :	Membrane; Single-pass type I membrane protein.
Expression :	Thymus,

Products Images



Immunohistochemical analysis of paraffin-embedded Human-liver tissue. 1, CD25 Monoclonal Antibody (Q22) was diluted at 1:200 (4 °C, overnight). 2, Sodium citrate pH 6.0 was used for antibody retrieval (>98 °C, 20 min). 3, Secondary antibody was diluted at 1:200 (room temperature, 30 min). Negative control was used by secondary antibody only.



Immunohistochemical analysis of paraffin-embedded Mouse Spleen Tissue using CD 25 Mouse mAb diluted at 1:500.