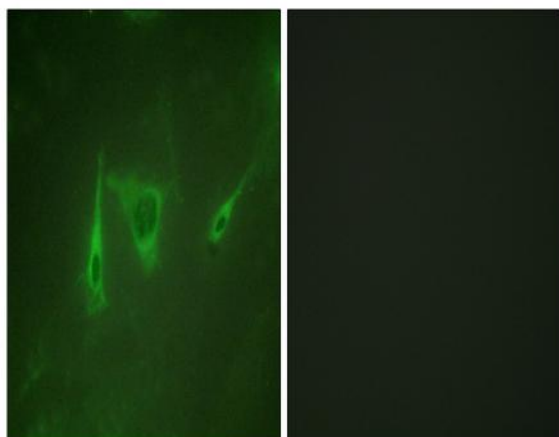


14-3-3 ζ/δ Polyclonal Antibody

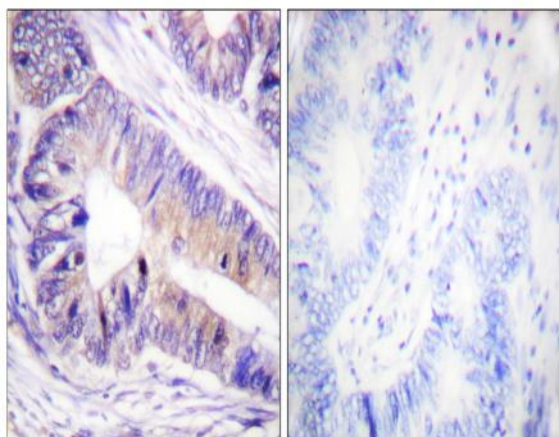
Catalog No :	YT0008
Reactivity :	Human;Mouse;Rat
Applications :	WB;IHC;IF;ELISA
Target :	14-3-3 ζ/δ
Fields :	>>Cell cycle;>>Oocyte meiosis;>>PI3K-Akt signaling pathway;>>Hippo signaling pathway;>>Hepatitis C;>>Hepatitis B;>>Viral carcinogenesis
Gene Name :	YWHAZ
Protein Name :	14-3-3 protein zeta/delta
Human Gene Id :	7534
Human Swiss Prot No :	P63104
Mouse Gene Id :	22631
Mouse Swiss Prot No :	P63101
Rat Gene Id :	25578
Rat Swiss Prot No :	P63102
Immunogen :	The antiserum was produced against synthesized peptide derived from human 14-3-3 zeta/delta. AA range:196-245
Specificity :	14-3-3 ζ/δ Polyclonal Antibody detects endogenous levels of 14-3-3 ζ/δ protein.
Formulation :	Liquid in PBS containing 50% glycerol, 0.5% BSA and 0.02% sodium azide.
Source :	Polyclonal, Rabbit,IgG
Dilution :	WB 1:500 - 1:2000. IHC 1:100 - 1:300. IF 1:200 - 1:1000. ELISA: 1:10000. Not yet tested in other applications.

Purification :	The antibody was affinity-purified from rabbit antiserum by affinity-chromatography using epitope-specific immunogen.
Concentration :	1 mg/ml
Storage Stability :	-15°C to -25°C/1 year(Do not lower than -25°C)
Observed Band :	28kD
Cell Pathway :	Cell_Cycle_G1S;Cell_Cycle_G2M_DNA;Oocyte meiosis;Neurotrophin;Pathogenic Escherichia coli infection;
Background :	This gene product belongs to the 14-3-3 family of proteins which mediate signal transduction by binding to phosphoserine-containing proteins. This highly conserved protein family is found in both plants and mammals, and this protein is 99% identical to the mouse, rat and sheep orthologs. The encoded protein interacts with IRS1 protein, suggesting a role in regulating insulin sensitivity. Several transcript variants that differ in the 5' UTR but that encode the same protein have been identified for this gene. [provided by RefSeq, Oct 2008],
Function :	caution:Was originally (PubMed:1577711) thought to have phospholipase A2 activity.,function:Adapter protein implicated in the regulation of a large spectrum of both general and specialized signaling pathway. Binds to a large number of partners, usually by recognition of a phosphoserine or phosphothreonine motif. Binding generally results in the modulation of the activity of the binding partner.,PTM:The delta, brain-specific form differs from the zeta form in being phosphorylated (By similarity). Phosphorylation on Ser-184 by MAPK8; promotes dissociation of BAX and translocation of BAX to mitochondria. Phosphorylation on Ser-58 by PKA; disrupts homodimerization and heterodimerization with YHAE and TP53. This phosphorylation appears to be activated by sphingosine. Phosphorylation on Thr-232; inhibits binding of RAF1.,similarity:Belongs to the 14-3-3 family.,subcellular location:Located to
Subcellular Location :	Cytoplasm . Melanosome . Located to stage I to stage IV melanosomes.
Expression :	B-cell lymphoma,Bone marrow

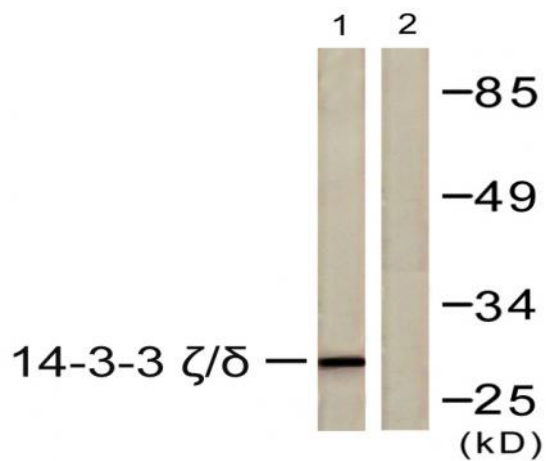
Products Images



Immunofluorescence analysis of NIH/3T3 cells, using 14-3-3 zeta/delta Antibody. The picture on the right is blocked with the synthesized peptide.



Immunohistochemistry analysis of paraffin-embedded human colon carcinoma tissue, using 14-3-3 zeta/delta Antibody. The picture on the right is blocked with the synthesized peptide.



Western blot analysis of lysates from K562 cells, using 14-3-3 zeta/delta Antibody. The lane on the right is blocked with the synthesized peptide.