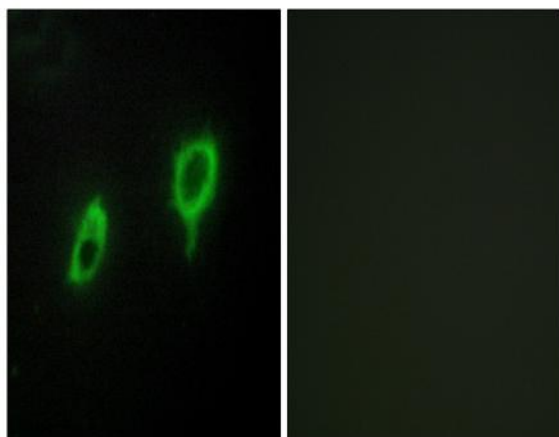


14-3-3 γ Polyclonal Antibody

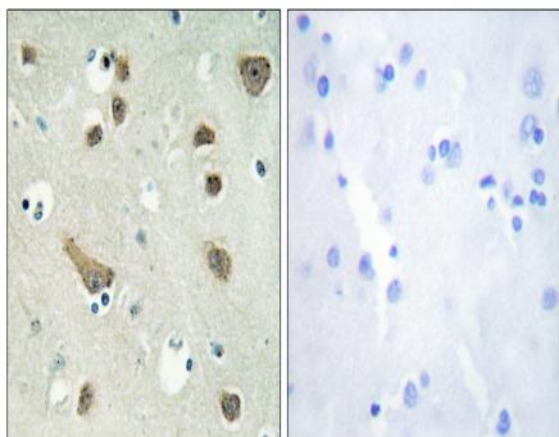
Catalog No :	YT0004
Reactivity :	Human;Mouse;Rat
Applications :	WB;IHC;IF;ELISA
Target :	14-3-3 γ
Fields :	>>Cell cycle;>>Oocyte meiosis;>>PI3K-Akt signaling pathway;>>Hippo signaling pathway;>>Hepatitis C;>>Viral carcinogenesis
Gene Name :	YWHAG
Protein Name :	14-3-3 protein gamma
Human Gene Id :	7532
Human Swiss Prot No :	P61981
Mouse Gene Id :	22628
Mouse Swiss Prot No :	P61982
Rat Gene Id :	56010
Rat Swiss Prot No :	P61983
Immunogen :	The antiserum was produced against synthesized peptide derived from human 14-3-3 gamma. AA range:51-100
Specificity :	14-3-3 γ Polyclonal Antibody detects endogenous levels of 14-3-3 γ protein.
Formulation :	Liquid in PBS containing 50% glycerol, 0.5% BSA and 0.02% sodium azide.
Source :	Polyclonal, Rabbit,IgG
Dilution :	WB 1:500 - 1:2000. IHC 1:100 - 1:300. IF 1:200 - 1:1000. ELISA: 1:10000. Not yet tested in other applications.

Purification :	The antibody was affinity-purified from rabbit antiserum by affinity-chromatography using epitope-specific immunogen.
Concentration :	1 mg/ml
Storage Stability :	-15°C to -25°C/1 year(Do not lower than -25°C)
Observed Band :	28kD
Cell Pathway :	Cell_Cycle_G1S;Cell_Cycle_G2M_DNA;Oocyte meiosis;Neurotrophin;
Background :	This gene product belongs to the 14-3-3 family of proteins which mediate signal transduction by binding to phosphoserine-containing proteins. This highly conserved protein family is found in both plants and mammals, and this protein is 100% identical to the rat ortholog. It is induced by growth factors in human vascular smooth muscle cells, and is also highly expressed in skeletal and heart muscles, suggesting an important role for this protein in muscle tissue. It has been shown to interact with RAF1 and protein kinase C, proteins involved in various signal transduction pathways. [provided by RefSeq, Jul 2008],
Function :	function:Adapter protein implicated in the regulation of a large spectrum of both general and specialized signaling pathway. Binds to a large number of partners, usually by recognition of a phosphoserine or phosphothreonine motif. Binding generally results in the modulation of the activity of the binding partner.,PTM:Phosphorylated by various PKC isozymes.,similarity:Belongs to the 14-3-3 family.,subunit:Homodimer. Interacts with RAF1, SSH1 and CRTC2/TORC2. Interacts with ABL1 (phosphorylated form); the interaction retains it in the cytoplasm.,tissue specificity:Highly expressed in brain, skeletal muscle, and heart.,
Subcellular Location :	Cytoplasm .
Expression :	Highly expressed in brain, skeletal muscle, and heart.

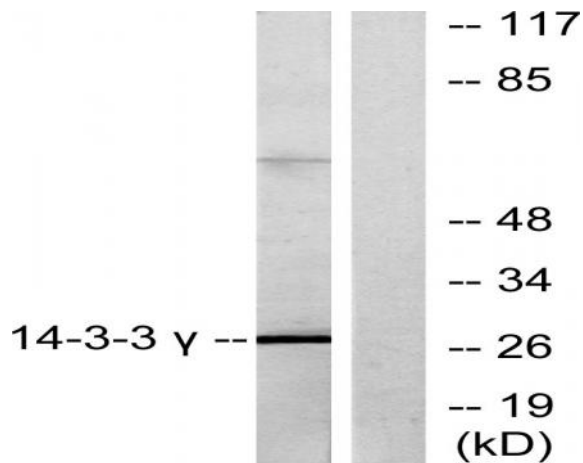
Products Images



Immunofluorescence analysis of COS7 cells, using 14-3-3 gamma Antibody. The picture on the right is blocked with the synthesized peptide.



Immunohistochemistry analysis of paraffin-embedded human brain tissue, using 14-3-3 gamma Antibody. The picture on the right is blocked with the synthesized peptide.



Western blot analysis of lysates from K562 cells, treated with insulin 0.01U/ml 15', using 14-3-3 gamma Antibody. The lane on the right is blocked with the synthesized peptide.