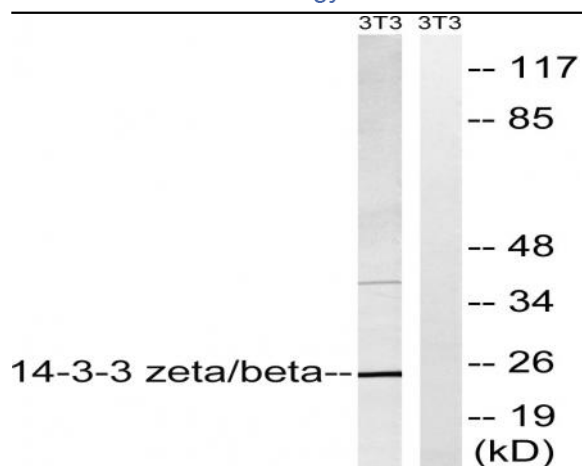


14-3-3 β/ζ Polyclonal Antibody

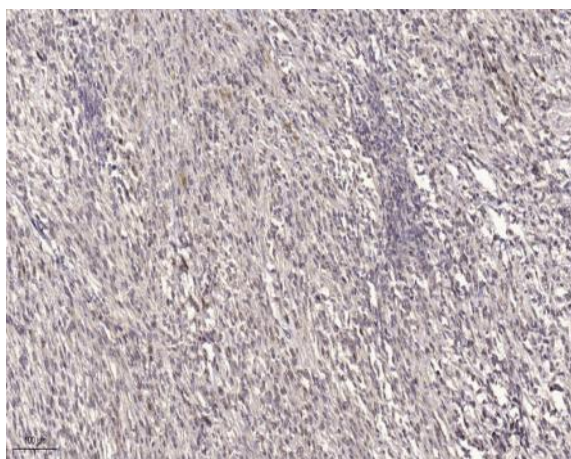
Catalog No :	YT0003
Reactivity :	Human;Mouse;Rat
Applications :	WB;IHC;IF;ELISA
Target :	14-3-3 β/ζ
Fields :	>>Cell cycle;>>Oocyte meiosis;>>PI3K-Akt signaling pathway;>>Hippo signaling pathway;>>Hepatitis C;>>Hepatitis B;>>Viral carcinogenesis
Gene Name :	YWHAB/YWHAZ
Protein Name :	14-3-3 protein beta/alpha/14-3-3 protein zeta/delta
Human Gene Id :	7534/7529
Human Swiss Prot No :	P63104/P31946
Mouse Gene Id :	22631/54401
Rat Gene Id :	25578/56011
Rat Swiss Prot No :	P63102/P35213
Immunogen :	The antiserum was produced against synthesized peptide derived from human YWHAZ. AA range:151-200
Specificity :	14-3-3 β/ζ Polyclonal Antibody detects endogenous levels of 14-3-3 β/ζ protein.
Formulation :	Liquid in PBS containing 50% glycerol, 0.5% BSA and 0.02% sodium azide.
Source :	Polyclonal, Rabbit,IgG
Dilution :	WB 1:500 - 1:2000. ELISA: 1:20000.. IF 1:50-200
Purification :	The antibody was affinity-purified from rabbit antiserum by affinity-chromatography using epitope-specific immunogen.

Concentration :	<u>1 mg/ml</u>
Storage Stability :	<u>-15°C to -25°C/1 year(Do not lower than -25°C)</u>
Observed Band :	<u>24kD</u>
Cell Pathway :	<u>Akt_PKB;Cell_Cycle_G1S;Cell_Cycle_G2M_DNA;Oocyte meiosis;Neurotrophin;Pathogenic Escherichia coli infection;</u>
Background :	<u>This gene product belongs to the 14-3-3 family of proteins which mediate signal transduction by binding to phosphoserine-containing proteins. This highly conserved protein family is found in both plants and mammals, and this protein is 99% identical to the mouse, rat and sheep orthologs. The encoded protein interacts with IRS1 protein, suggesting a role in regulating insulin sensitivity. Several transcript variants that differ in the 5' UTR but that encode the same protein have been identified for this gene. [provided by RefSeq, Oct 2008],</u>
Function :	<u>caution:Was originally (PubMed:1577711) thought to have phospholipase A2 activity.,function:Adapter protein implicated in the regulation of a large spectrum of both general and specialized signaling pathway. Binds to a large number of partners, usually by recognition of a phosphoserine or phosphothreonine motif. Binding generally results in the modulation of the activity of the binding partner.,PTM:The delta, brain-specific form differs from the zeta form in being phosphorylated (By similarity). Phosphorylation on Ser-184 by MAPK8; promotes dissociation of BAX and translocation of BAX to mitochondria. Phosphorylation on Ser-58 by PKA; disrupts homodimerization and heterodimerization with YHAE and TP53. This phosphorylation appears to be activated by sphingosine. Phosphorylation on Thr-232; inhibits binding of RAF1.,similarity:Belongs to the 14-3-3 family.,subcellular location:Located to</u>
Subcellular Location :	<u>Cytoplasm . Melanosome . Located to stage I to stage IV melanosomes.</u>
Expression :	<u>B-cell lymphoma,Bone marrow</u>

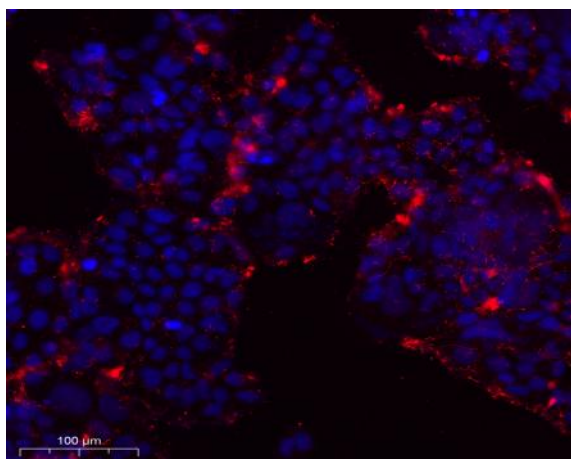
Products Images



Western blot analysis of lysates from NIH/3T3 cells, using 14-3-3 beta/zeta Antibody. The lane on the right is blocked with the synthesized peptide.



Immunohistochemical analysis of paraffin-embedded human small intestinal carcinoma tissue. 1, primary Antibody was diluted at 1:200 (4° overnight). 2, Sodium citrate pH 6.0 was used for antigen retrieval (>98° C, 20min). 3, Secondary antibody was diluted at 1:200



Immunofluorescence analysis of Caco2 cell. 1, primary Antibody was diluted at 1:100 (4° C overnight). 2, Goat Anti Rabbit IgG (H&L) - AFluor 594 Secondary antibody (catalog No: RS3611) was diluted at 1:500 (room temperature, 50min).