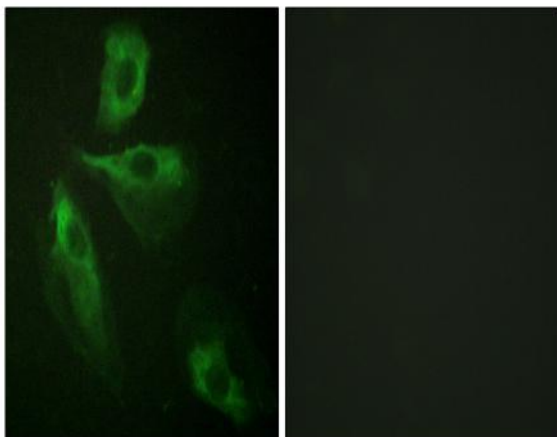


ADD1 Polyclonal Antibody

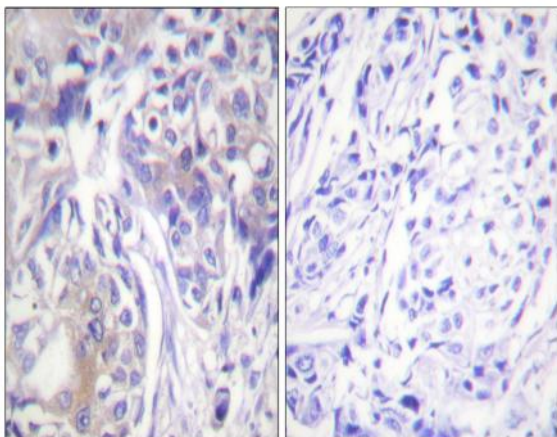
| | |
|------------------------------|---|
| Catalog No : | YT0124 |
| Reactivity : | Human;Mouse;Rat |
| Applications : | IHC;IF;ELISA |
| Target : | ADD1 |
| Gene Name : | ADD1 |
| Protein Name : | Alpha-adducin |
| Human Gene Id : | 118 |
| Human Swiss Prot No : | P35611 |
| Mouse Gene Id : | 11518 |
| Mouse Swiss Prot No : | Q9QYC0 |
| Rat Gene Id : | 24170 |
| Rat Swiss Prot No : | Q63028 |
| Immunogen : | The antiserum was produced against synthesized peptide derived from human ADD1. AA range:411-460 |
| Specificity : | ADD1 Polyclonal Antibody detects endogenous levels of ADD1 protein. |
| Formulation : | Liquid in PBS containing 50% glycerol, 0.5% BSA and 0.02% sodium azide. |
| Source : | Polyclonal, Rabbit,IgG |
| Dilution : | IHC 1:100 - 1:300. IF 1:200 - 1:1000. ELISA: 1:10000. Not yet tested in other applications. |
| Purification : | The antibody was affinity-purified from rabbit antiserum by affinity-chromatography using epitope-specific immunogen. |

| | |
|-------------------------------|---|
| Concentration : | 1 mg/ml |
| Storage Stability : | -15°C to -25°C/1 year(Do not lower than -25°C) |
| Molecularweight : | 81kD |
| Background : | <p>adducin 1 (ADD1) Homo sapiens Adducins are a family of cytoskeleton proteins encoded by three genes (alpha, beta, gamma). Adducin is a heterodimeric protein that consists of related subunits, which are produced from distinct genes but share a similar structure. Alpha- and beta-adducin include a protease-resistant N-terminal region and a protease-sensitive, hydrophilic C-terminal region. Alpha- and gamma-adducins are ubiquitously expressed. In contrast, beta-adducin is expressed at high levels in brain and hematopoietic tissues. Adducin binds with high affinity to Ca(2+)/calmodulin and is a substrate for protein kinases A and C. Alternative splicing results in multiple variants encoding distinct isoforms; however, not all variants have been fully described. [provided by RefSeq, Jul 2008],</p> |
| Function : | <p>alternative products:Additional isoforms seem to exist,domain:Each subunit is comprised of three regions: a NH2-terminal protease-resistant globular head region, a short connecting subdomain, and a protease-sensitive tail region.,function:Membrane-cytoskeleton-associated protein that promotes the assembly of the spectrin-actin network. Binds to calmodulin.,PTM:The N-terminus is blocked.,similarity:Belongs to the aldolase class II family. Adducin subfamily.,subunit:Heterodimer of an alpha and a beta subunit or an alpha and a gamma subunit. Binds ROCK1.,tissue specificity:Expressed in all tissues. Found in much higher levels in reticulocytes than the beta subunit.,</p> |
| Subcellular Location : | Cytoplasm, cytoskeleton. Cell membrane; Peripheral membrane protein; Cytoplasmic side. |
| Expression : | Expressed in all tissues. Found in much higher levels in reticulocytes than the beta subunit. |

Products Images



Immunofluorescence analysis of HeLa cells, using ADD1 Antibody. The picture on the right is blocked with the synthesized peptide.



Immunohistochemistry analysis of paraffin-embedded human breast carcinoma tissue, using ADD1 Antibody. The picture on the right is blocked with the synthesized peptide.