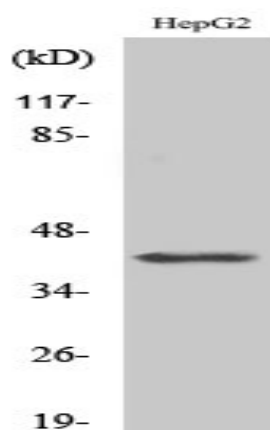


## Actin-κ Polyclonal Antibody

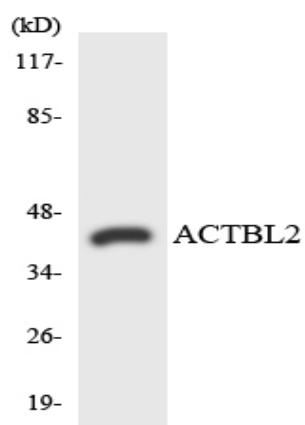
<b>Catalog No :</b>	YT0105
<b>Reactivity :</b>	Human;Mouse
<b>Applications :</b>	WB;ELISA
<b>Target :</b>	Actin-κ
<b>Gene Name :</b>	ACTBL2
<b>Protein Name :</b>	Beta-actin-like protein 2
<b>Human Gene Id :</b>	345651
<b>Human Swiss Prot No :</b>	Q562R1
<b>Mouse Gene Id :</b>	238880
<b>Mouse Swiss Prot No :</b>	Q8BFZ3
<b>Immunogen :</b>	The antiserum was produced against synthesized peptide derived from human ACTBL2. AA range:81-130
<b>Specificity :</b>	Actin-κ Polyclonal Antibody detects endogenous levels of Actin-κ protein.
<b>Formulation :</b>	Liquid in PBS containing 50% glycerol, 0.5% BSA and 0.02% sodium azide.
<b>Source :</b>	Polyclonal, Rabbit,IgG
<b>Dilution :</b>	WB 1:500 - 1:2000. ELISA: 1:20000. Not yet tested in other applications.
<b>Purification :</b>	The antibody was affinity-purified from rabbit antiserum by affinity-chromatography using epitope-specific immunogen.
<b>Concentration :</b>	1 mg/ml
<b>Storage Stability :</b>	-15°C to -25°C/1 year(Do not lower than -25°C)

<b>Observed Band :</b>	40kD
<b>Cell Pathway :</b>	Adherens_Junction
<b>Background :</b>	<p>function:Actins are highly conserved proteins that are involved in various types of cell motility and are ubiquitously expressed in all eukaryotic cells.,miscellaneous:In vertebrates 3 main groups of actin isoforms, alpha, beta and gamma have been identified. The alpha actins are found in muscle tissues and are a major constituent of the contractile apparatus. The beta and gamma actins coexist in most cell types as components of the cytoskeleton and as mediators of internal cell motility.,similarity:Belongs to the actin family.,subunit:Polymerization of globular actin (G-actin) leads to a structural filament (F-actin) in the form of a two-stranded helix. Each actin can bind to 4 others (By similarity). Interacts with PFN1 and PFDN1.,</p>
<b>Function :</b>	<p>function:Actins are highly conserved proteins that are involved in various types of cell motility and are ubiquitously expressed in all eukaryotic cells.,miscellaneous:In vertebrates 3 main groups of actin isoforms, alpha, beta and gamma have been identified. The alpha actins are found in muscle tissues and are a major constituent of the contractile apparatus. The beta and gamma actins coexist in most cell types as components of the cytoskeleton and as mediators of internal cell motility.,similarity:Belongs to the actin family.,subunit:Polymerization of globular actin (G-actin) leads to a structural filament (F-actin) in the form of a two-stranded helix. Each actin can bind to 4 others (By similarity). Interacts with PFN1 and PFDN1.,</p>
<b>Subcellular Location :</b>	Cytoplasm, cytoskeleton .
<b>Expression :</b>	Endometrial tumor,Hepatoma,

## Products Images



Western Blot analysis of various cells using Actin-k Polyclonal Antibody



Western blot analysis of the lysates from HUVECcells using ACTBL2 antibody.