

Catenin δ -1 (PT0385R) PT® Rabbit mAb

Catalog No :	YM8235
Reactivity :	Human; Mouse; Rat;
Applications :	WB;IHC;IF;IP;ELISA
Target :	p120 Catenin
Fields :	>>Rap1 signaling pathway;>>Adherens junction;>>Leukocyte transendothelial migration
Gene Name :	CTNND1 KIAA0384
Protein Name :	Cadherin associated Src substrate;Cadherin-associated Src substrate;CAS;Catenin (cadherin associated protein) delta 1;Catenin delta 1;Catenin delta;Catenin delta-1;CTND1_HUMAN;CTNND1;CTNND;CTNND1;del
Human Swiss Prot No :	O60716
Mouse Swiss Prot No :	P30999
Specificity :	endogenous
Formulation :	PBS, 50% glycerol, 0.05% Proclin 300, 0.05%BSA
Source :	Monoclonal, rabbit, IgG, Kappa
Dilution :	IHC 1:200-1:1000;WB 1:1000-1:5000;IF 1:200-1:1000;ELISA 1:5000-1:20000;IP 1:50-1:200;
Purification :	Protein A
Storage Stability :	-15 °C to -25 °C/1 year(Do not lower than -25 °C)
Molecularweight :	108kD
Observed Band :	108kD

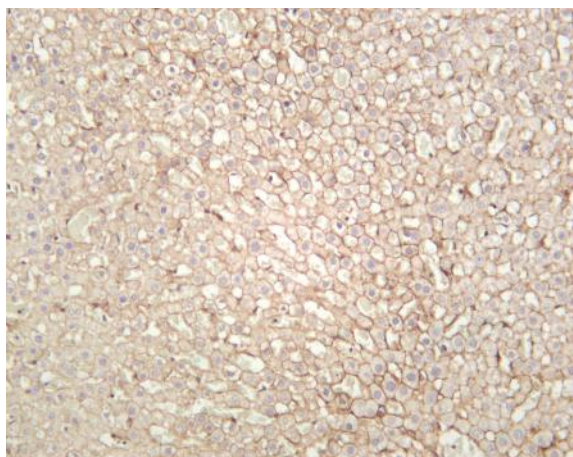
Background : catenin delta 1 (CTNND1) Homo sapiens This gene encodes a member of the Armadillo protein family, which function in adhesion between cells and signal transduction. Multiple translation initiation codons and alternative splicing result in many different isoforms being translated. Not all of the full-length nature of the described transcript variants have been determined. Read-through transcription also exists between this gene and the neighboring upstream thioredoxin-related transmembrane protein 2 (TMX2) gene. [provided by RefSeq, Dec 2010],

Function : alternative products:Experimental confirmation may be lacking for some isoforms,disease:May contribute to cell malignancy. Complete loss of expression was observed in approximately 10% of invasive ductal breast carcinomas investigated.,domain:A possible nuclear localization signal exists in all isoforms where Asp-626--631-Arg are deleted.,function:Binds to and inhibits the transcriptional repressor ZBTB33, which may lead to activation of target genes of the Wnt signaling pathway (By similarity). May associate with and regulate the cell adhesion properties of both C- and E-cadherins. Implicated both in cell transformation by SRC and in ligand-induced receptor signaling through the EGF, PDGF, CSF-1 and ERBB2 receptors. Promotes GLIS2 C-terminal cleavage.,induction:Induced in vascular endothelium by wounding. This effect is potentiated by prior laminar shear stress, which enhances wound clo

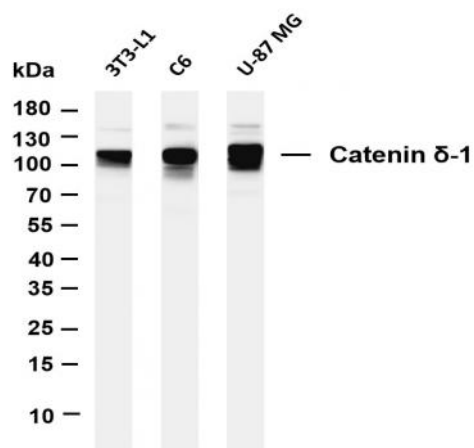
Subcellular Location : Membrane

Expression : Breast/ Tonsil

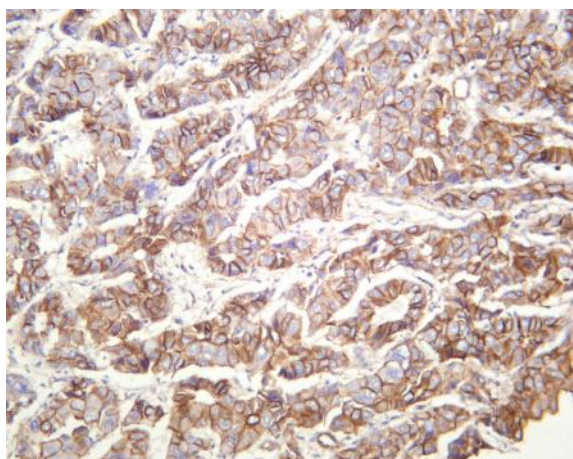
Products Images



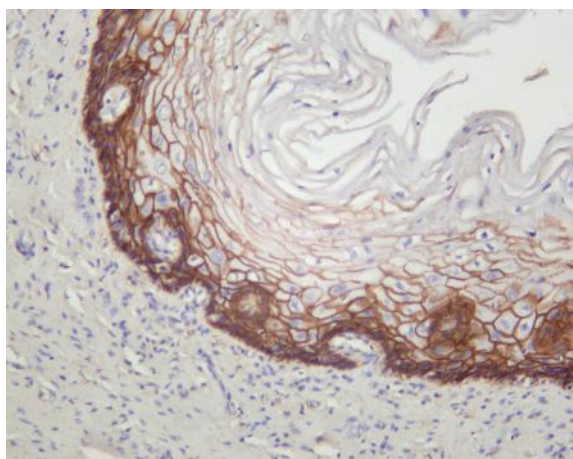
Rat liver was stained with anti-Catenin δ -1 (PT0385R) rabbit antibody



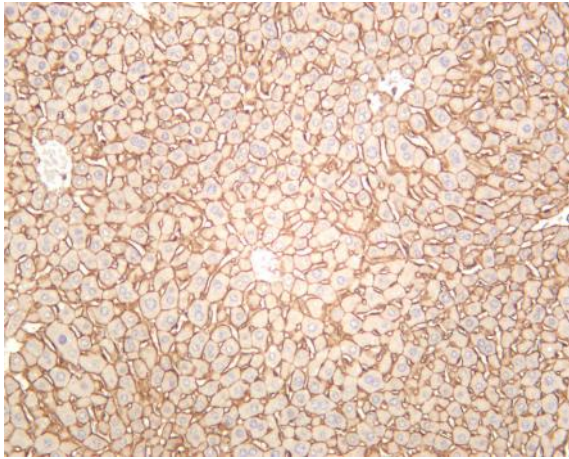
Various whole cell lysates were separated by 4-20% SDS-PAGE, and the membrane was blotted with anti-Catenin δ -1 (PT0385R) antibody. The HRP-conjugated Goat anti-Rabbit IgG(H + L) antibody was used to detect the antibody. Lane 1: 3T3-L1 Lane 2: C6 Lane 3: U-87 MG Predicted band size: 108kDa Observed band size: 108kDa



Human cervical squamous carcinoma was stained with anti-Catenin δ -1 (PT0385R) rabbit antibody



Human hepatocellular carcinoma was stained with anti-Catenin δ -1 (PT0385R) rabbit antibody



Mouse liver was stained with anti-Catenin δ -1 (PT0385R) rabbit antibody