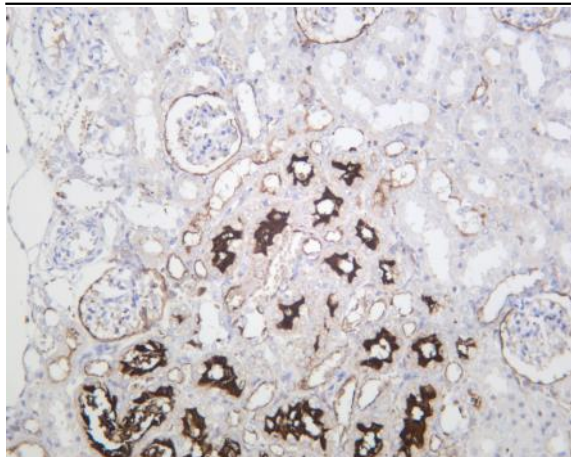


CD10 (PT0537R) PT® Rabbit mAb

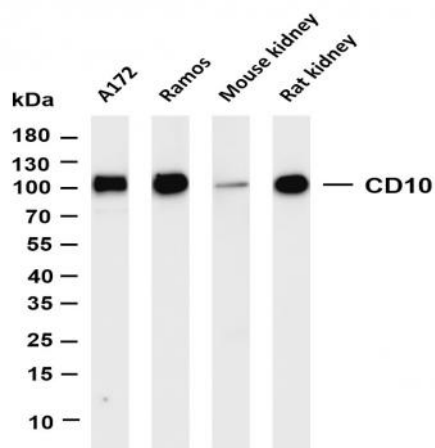
Catalog No :	YM8358
Reactivity :	Human; Mouse; Rat;
Applications :	WB;IHC;IF;IP;ELISA
Target :	CD10
Fields :	>>Renin-angiotensin system;>>Hematopoietic cell lineage;>>Protein digestion and absorption;>>Alzheimer disease
Gene Name :	MME
Protein Name :	Neprilysin
Human Gene Id :	4311
Human Swiss Prot No :	P08473
Mouse Gene Id :	17380
Mouse Swiss Prot No :	Q61391
Rat Gene Id :	24590
Rat Swiss Prot No :	P07861
Specificity :	endogenous
Formulation :	PBS, 50% glycerol, 0.05% Proclin 300, 0.05%BSA
Source :	Monoclonal, rabbit, IgG, Kappa
Dilution :	IHC 1:1000-1:4000;WB 1:2000-1:10000;IF 1:200-1:1000;ELISA 1:5000-1:20000;IP 1:50-1:200;
Purification :	Protein A

Storage Stability :	<u>-15°C to -25°C/1 year(Do not lower than -25°C)</u>
Molecularweight :	<u>86kD</u>
Observed Band :	<u>100kD</u>
Cell Pathway :	<u>Renin-angiotensin system;Hematopoietic cell lineage;Alzheimer's disease;</u>
Background :	<p>This gene encodes a common acute lymphocytic leukemia antigen that is an important cell surface marker in the diagnosis of human acute lymphocytic leukemia (ALL). This protein is present on leukemic cells of pre-B phenotype, which represent 85% of cases of ALL. This protein is not restricted to leukemic cells, however, and is found on a variety of normal tissues. It is a glycoprotein that is particularly abundant in kidney, where it is present on the brush border of proximal tubules and on glomerular epithelium. The protein is a neutral endopeptidase that cleaves peptides at the amino side of hydrophobic residues and inactivates several peptide hormones including glucagon, enkephalins, substance P, neurotensin, oxytocin, and bradykinin. This gene, which encodes a 100-kD type II transmembrane glycoprotein, exists in a single copy of greater than 45 kb. The 5' untranslated region of this</p>
Function :	<p>catalytic activity:Preferential cleavage of polypeptides between hydrophobic residues, particularly with Phe or Tyr at P1'.,cofactor:Binds 1 zinc ion per subunit.,disease:Important cell surface marker in the diagnostic of human acute lymphocytic leukemia.,enzyme regulation:Inhibited in a dose dependent manner by opiorphin.,function:Thermolysin-like specificity, but is almost confined on acting on polypeptides of up to 30 amino acids. Biologically important in the destruction of opioid peptides such as Met- and Leu-enkephalins by cleavage of a Gly-Phe bond. Involved in the degradation of atrial natriuretic factor (ANF).,similarity:Belongs to the peptidase M13 family.,</p>
Subcellular Location :	<u>Membrane</u>
Expression :	<u>Adrenal cortex,Brain,Kidney,Placenta,</u>

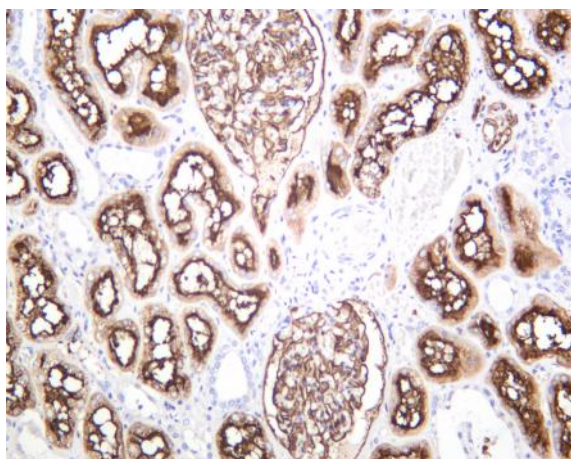
Products Images



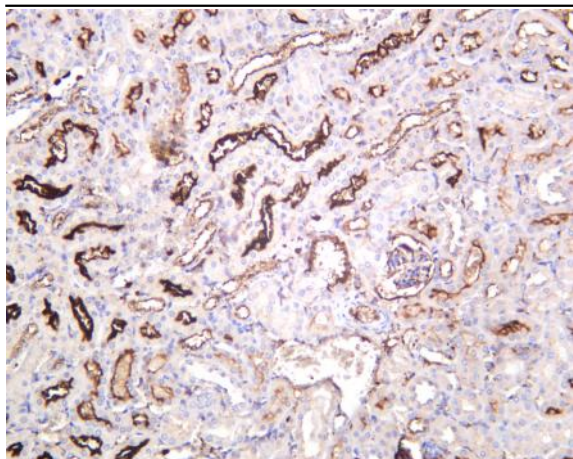
Rat kidney was stained with anti-CD10 (PT0537R) rabbit antibody



Various whole cell lysates were separated by 4-20% SDS-PAGE, and the membrane was blotted with anti-CD10 (PT0537R) antibody. The HRP-conjugated Goat anti-Rabbit IgG(H + L) antibody was used to detect the antibody. Lane 1: A172 Lane 2: Ramos Lane 3: Mouse kidney Lane 4: Rat kidney Predicted band size: 86kDa Observed band size: 100kDa



Human kidney was stained with anti-CD10 (PT0537R) rabbit antibody



Mouse kidney was stained with anti-CD10 (PT0537R) rabbit antibody