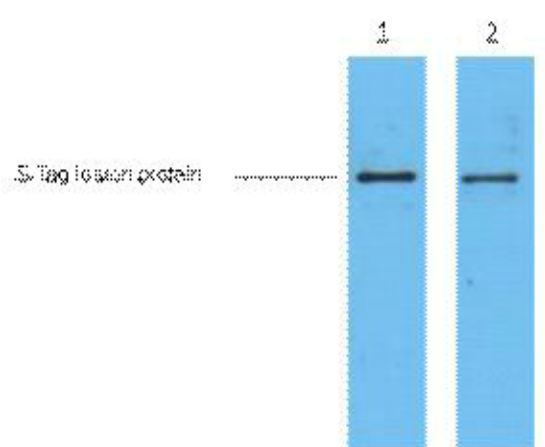


S-Tag Monoclonal Antibody(3B3)

Catalog No :	YM3017
Reactivity :	Species independent
Applications :	WB
Target :	S-Tag
Immunogen :	Synthetic Peptide of S-Tag
Specificity :	The antibody detects S tag fusion proteins.
Formulation :	PBS, pH 7.4, containing 0.5%BSA, 0.02% sodium azide as Preservative and 50% Glycerol.
Source :	Monoclonal, Mouse
Dilution :	WB 1:5000
Purification :	The antibody was affinity-purified from mouse ascites by affinity-chromatography using specific immunogen.
Storage Stability :	-15°C to -25°C/1 year(Do not lower than -25°C)
Background :	S-tag is the name of an oligopeptide derived from pancreatic ribonuclease A (RNase A). If RNase A is digested with subtilisin, a single peptide bond is cleaved, but the resulting two products remain weakly bound to each other and the protein, called ribonuclease S, remains active although each of the two products alone shows no enzymatic activity. The N-terminus of the original RNase A, also called S-peptide, consists of 20 amino acids KETAAAKFERQHMDs. S Tag antibody can recognize C-terminal, internal, and N-terminal S-tagged proteins.

Products Images



2ug S-Tag fusion protein+ Primary antibody dilution at 1) 1:5000
2) 1:10000