

R-Cadherin (PT2127) mouse mAb

Catalog No :	YM4300
Reactivity :	Human;Mouse;Rat;
Applications :	WB;IF;ELISA
Target :	CDH4
Gene Name :	CDH4
Protein Name :	Cadherin-4 (Retinal cadherin) (R-CAD) (R-cadherin)
Human Gene Id :	1002
Human Swiss Prot No :	P55283
Mouse Gene Id :	12561
Mouse Swiss Prot No :	P39038
Rat Swiss Prot No :	Q63149
Immunogen :	Synthesized peptide derived from human R-Cadherin. AA range: 150-250
Specificity :	This antibody detects endogenous levels of R-Cadherin protein.
Formulation :	PBS, 50% glycerol, 0.05% Proclin 300, 0.05%BSA
Source :	Mouse, Monoclonal/IgG1, kappa
Dilution :	WB 1:500-2000. IF 1:100-500. ELISA 1:1000-5000
Purification :	Protein G
Concentration :	1 mg/ml
Storage Stability :	-15°C to -25°C/1 year(Do not lower than -25°C)

Molecularweight : 102kD

Observed Band : 120kD

Background :

cadherin 4(CDH4) Homo sapiens This gene is a classical cadherin from the cadherin superfamily. The encoded protein is a calcium-dependent cell-cell adhesion glycoprotein comprised of five extracellular cadherin repeats, a transmembrane region and a highly conserved cytoplasmic tail. Based on studies in chicken and mouse, this cadherin is thought to play an important role during brain segmentation and neuronal outgrowth. In addition, a role in kidney and muscle development is indicated. Of particular interest are studies showing stable cis-heterodimers of cadherins 2 and 4 in cotransfected cell lines. Previously thought to interact in an exclusively homophilic manner, this is the first evidence of cadherin heterodimerization. Three transcript variants encoding different isoforms have been found for this gene. [provided by RefSeq, Nov 2011],

Function :

Cadherins are calcium-dependent cell adhesion proteins. They preferentially interact with themselves in a homophilic manner in connecting cells; cadherins may thus contribute to the sorting of heterogeneous cell types. May play an important role in retinal development.

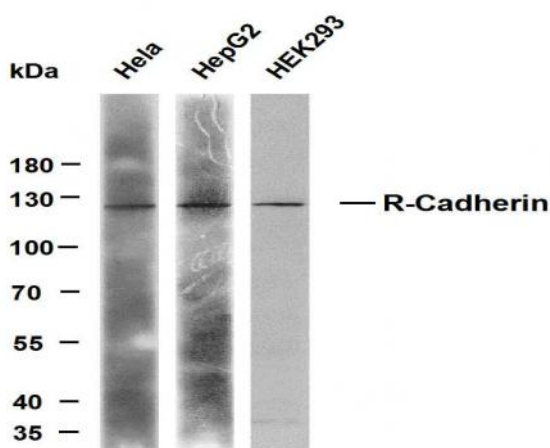
Subcellular Location :

Membranous

Expression :

Expressed mainly in brain but also found in other tissues.

Products Images



Various whole cell lysates were separated by 8% SDS-PAGE, and the membrane was blotted with anti-R-Cadherin (PT2127) antibody. The HRP-conjugated anti-Mouse IgG antibody was used to detect the antibody. Lane 1: HeLa Lane 2: HepG2 Lane 3: HEK293