

## Stathmin (ABT347) mouse mAb (Ready to Use)

<b>Catalog No :</b>	YM6097R
<b>Reactivity :</b>	Human;Mouse;Rat;
<b>Applications :</b>	IHC
<b>Target :</b>	Stathmin 1
<b>Fields :</b>	>>MAPK signaling pathway;>>MicroRNAs in cancer
<b>Gene Name :</b>	STMN1 C1orf215 LAP18 OP18
<b>Protein Name :</b>	C1orf215;Lag;LAP 18;LAP18;Leukemia associated phosphoprotein p18;Leukemia-associated phosphoprotein p18;Metablastin;Oncoprotein 18;OP 18;Op18;p18;p19;Phosphoprotein 19;Phosphoprotein p19;pp17;pp19;PR2
<b>Human Swiss Prot No :</b>	P16949
<b>Mouse Swiss Prot No :</b>	P54227
<b>Rat Swiss Prot No :</b>	P13668
<b>Immunogen :</b>	Synthesized peptide derived from human Stathmin AA range: 1-100
<b>Specificity :</b>	The antibody can specifically recognize human Stathmin protein.
<b>Formulation :</b>	The prediluted ready-to-use antibody is diluted in phosphate buffer saline containing stabilizing protein and 0.05% Proclin 300
<b>Source :</b>	Mouse, Monoclonal/IgG2a, kappa
<b>Dilution :</b>	Ready to use for IHC
<b>Purification :</b>	The antibody was affinity-purified from ascites by affinity-chromatography using specific immunogen.
<b>Storage Stability :</b>	2°C to 8°C/1 year

## Background :

This gene belongs to the stathmin family of genes. It encodes a ubiquitous cytosolic phosphoprotein proposed to function as an intracellular relay integrating regulatory signals of the cellular environment. The encoded protein is involved in the regulation of the microtubule filament system by destabilizing microtubules. It prevents assembly and promotes disassembly of microtubules. Multiple transcript variants encoding different isoforms have been found for this gene. [provided by RefSeq, Feb 2009],

## Function :

disease:Present in much greater abundance in cells from patients with acute leukemia of different subtypes than in normal peripheral blood lymphocytes, non-leukemic proliferating lymphoid cells, bone marrow cells, or cells from patients with chronic lymphoid or myeloid leukemia.,function:Involved in the regulation of the microtubule (MT) filament system by destabilizing microtubules. Prevents assembly and promotes disassembly of microtubules. Phosphorylation at Ser-16 may be required for axon formation during neurogenesis. Involved in the control of the learned and innate fear.,PTM:Many different phosphorylated forms are observed depending on specific combinations among the sites which can be phosphorylated. MAPK is responsible for the phosphorylation of stathmin in response to NGF. Phosphorylation at Ser-16 seems to be required for neuron polarization (By similarity). Phosphorylation at

## Subcellular

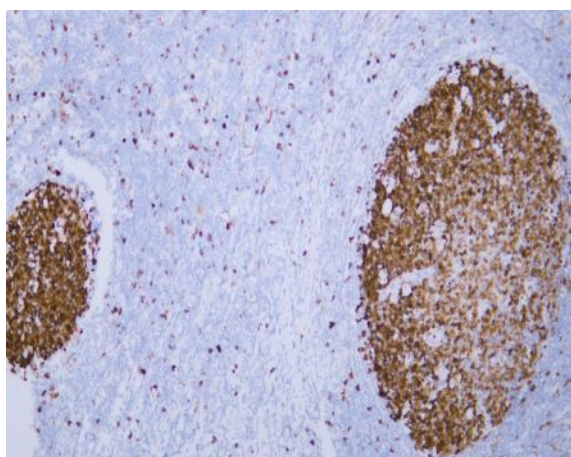
## Location :

Cytoplasmic

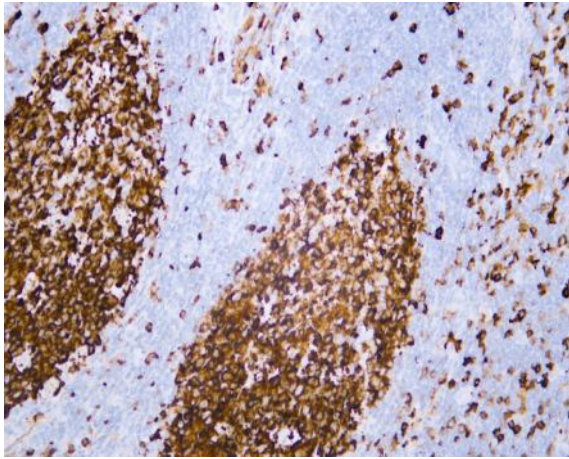
## Expression :

Tonsil

## Products Images



Human tonsil tissue was stained with Anti-Stathmin (ABT347) Antibody



Human tonsil tissue was stained with Anti-Stathmin (ABT347) Antibody