

## CD34 (ABT-CD34) mouse mAb

|                              |  |
|------------------------------|--|
| <b>Catalog No :</b>          | YM6152   |
| <b>Reactivity :</b>          | Human  |
| <b>Applications :</b>        | IHC;IF;ELISA   |
| <b>Target :</b>              | CD34   |
| <b>Fields :</b>              | >>Cell adhesion molecules;>>Hematopoietic cell lineage   |
| <b>Gene Name :</b>           | CD34   |
| <b>Protein Name :</b>        | Hematopoietic progenitor cell antigen CD34 (CD antigen CD34)   |
| <b>Human Gene Id :</b>       | 947  |
| <b>Human Swiss Prot No :</b> | P28906   |
| <b>Immunogen :</b>           | Synthesized peptide derived from human CD34 AA range: 150-250  |
| <b>Specificity :</b>         | This antibody detects endogenous levels of human CD34. Heat-induced epitope retrieval (HIER) TRIS-EDTA of pH8.0 was highly recommended as antigen repair method in paraffin section  |
| <b>Formulation :</b>         | Liquid in PBS containing 50% glycerol, 0.5% BSA and 0.02% sodium azide.  |
| <b>Source :</b>              | Mouse, Monoclonal/IgG1, Kappa  |
| <b>Dilution :</b>            | IHC 1:200-400. IF 1:50-200, ELISA 1:5000-20000   |
| <b>Purification :</b>        | The antibody was affinity-purified from mouse ascites by affinity-chromatography using specific immunogen.   |
| <b>Storage Stability :</b>   | -15°C to -25°C/1 year(Do not lower than -25°C)   |
| <b>Background :</b>          | The protein encoded by this gene may play a role in the attachment of stem cells to the bone marrow extracellular matrix or to stromal cells. This single-pass membrane protein is highly glycosylated and phosphorylated by protein kinase C. |

---

Two transcript variants encoding different isoforms have been found for this gene.  
[provided by RefSeq, Aug 2011],

---

**Function :**

alternative products:Both isoforms are expressed on the cell surface.  
CD34-T/CD34-F ratio increases with cell differentiation,developmental stage:On early hematopoietic progenitor cells.,disease:Abnormal CD34 expression in leukemogenesis.,function:Possible adhesion molecule with a role in early hematopoiesis by mediating the attachment of stem cells to the bone marrow extracellular matrix or directly to stromal cells. Could act as a scaffold for the attachment of lineage specific glycans, allowing stem cells to bind to lectins expressed by stromal cells or other marrow components. Presents carbohydrate ligands to selectins.,online information:CD34 entry,PTM:Highly glycosylated.,PTM:Phosphorylated on serine residues by PKC.,similarity:Belongs to the CD34 family.,tissue specificity:Selectively expressed on hematopoietic progenitor cells and the small vessel endothelium of a variety of tiss

---

**Subcellular Location :**

Membrane; Single-pass type I membrane protein.

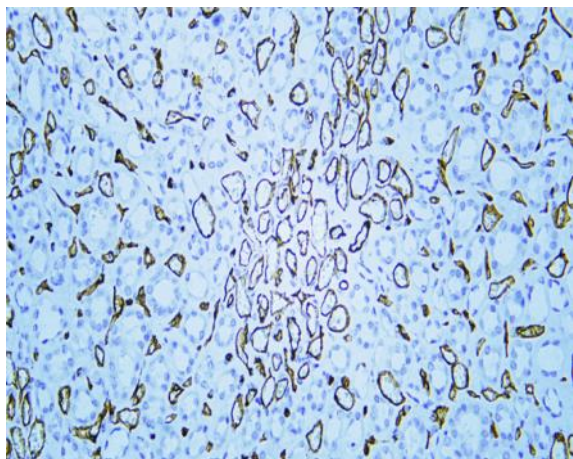
---

**Expression :**

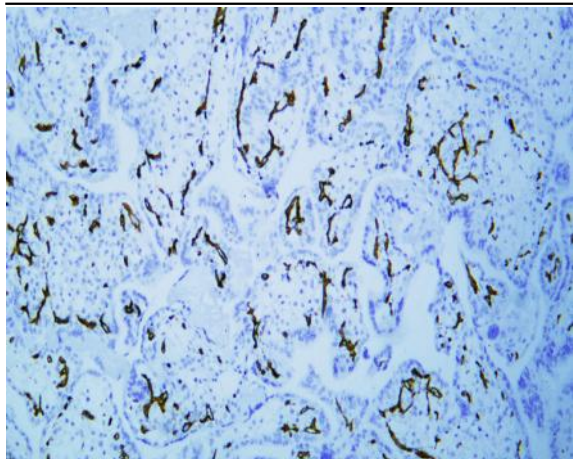
Selectively expressed on hematopoietic progenitor cells and the small vessel endothelium of a variety of tissues.

---

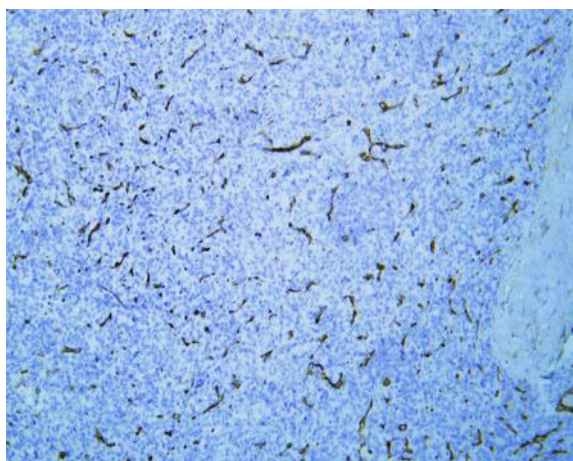
## Products Images



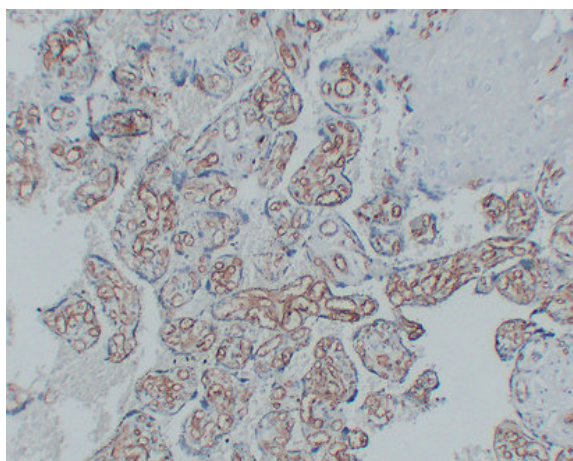
Human kidney tissue was stained with Anti-CD34 (ABT-CD34) Antibody



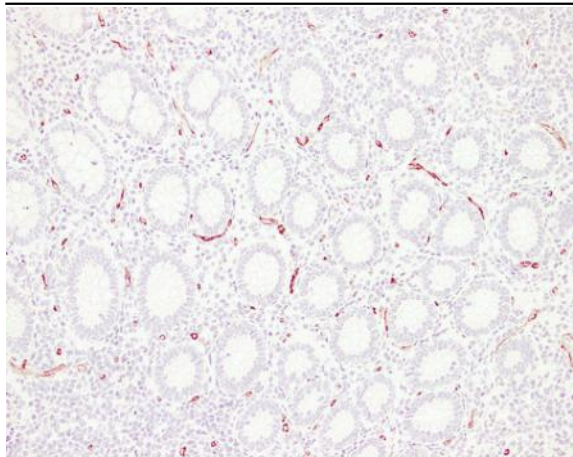
Human placenta tissue was stained with Anti-CD34 (ABT-CD34) Antibody



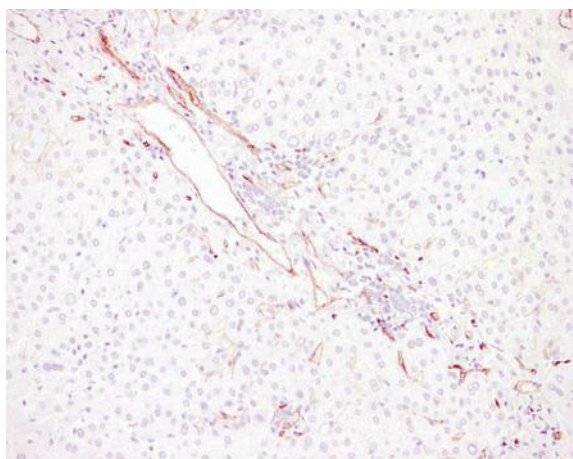
Human spleen tissue was stained with Anti-CD34 (ABT-CD34) Antibody



Immunohistochemical analysis of paraffin-embedded Placenta. 1, Antibody was diluted at 1:200(4° overnight). 2, Tris-EDTA,pH8.0 was used for antigen retrieval. 3,Secondary antibody was diluted at 1:200(room temperature, 30min).



Immunohistochemical analysis of paraffin-embedded Appendix. 1, Antibody was diluted at 1:200(4° overnight). 2, Tris-EDTA,pH8.0 was used for antigen retrieval. 3,Secondary antibody was diluted at 1:200(room temperature, 30min).



Immunohistochemical analysis of paraffin-embedded Liver. 1, Antibody was diluted at 1:200(4° overnight). 2, Tris-EDTA,pH8.0 was used for antigen retrieval. 3,Secondary antibody was diluted at 1:200(room temperature, 30min).