

NFκB-p100 Polyclonal Antibody

Catalog No :	YT3093
Reactivity :	Human,Mouse,Rat
Applications :	WB,IHC-p,IP,IF/ICC,ELISA
Gene Name :	NFKB2
Protein Name :	Nuclear factor NF-kappa-B p100 subunit
Human Gene Id :	4791
Human Swiss Prot No :	Q00653
Mouse Gene Id :	18034
Mouse Swiss Prot No :	Q9WTK5
Immunogen :	The antiserum was produced against synthesized peptide derived from human NF-kappaB p100/p52. AA range:833-882
Specificity :	NFκB-p100 Polyclonal Antibody detects endogenous levels of NFκB-p100 protein.
Formulation :	Liquid in PBS containing 50% glycerol, 0.5% BSA and 0.02% sodium azide.
Source :	Rabbit
Dilution :	Western Blot: 1/500 - 1/2000. Immunohistochemistry: 1/100 - 1/300. Immunoprecipitation: 2-5 ug/mg lysate. Immunofluorescence: 1/200 - 1/1000. ELISA: 1/20000. Not yet tested in other applications.
Purification :	The antibody was affinity-purified from rabbit antiserum by affinity-chromatography using epitope-specific immunogen.
Concentration :	1 mg/ml
Storage Stability :	-20°C/1 year

Molecularweight : 96749

Cell Pathway : B Cell Receptor, Stem cell pathway, MAPK_ERK_Growth,MAPK_G_Protein, PI3K/Akt, NF_kappaB, Protein_Acetylation

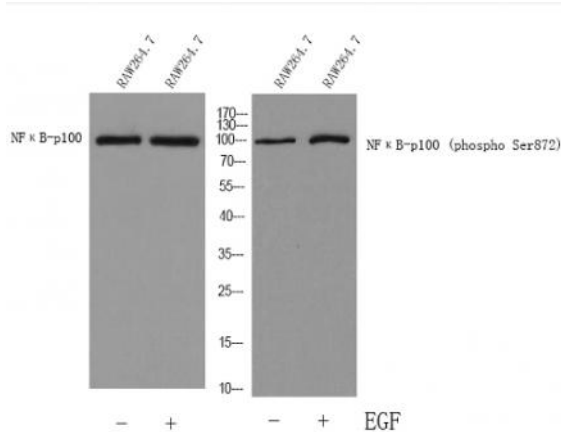
Background : nuclear factor kappa B subunit 2(NFKB2) Homo sapiens This gene encodes a subunit of the transcription factor complex nuclear factor-kappa-B (NFkB). The NFkB complex is expressed in numerous cell types and functions as a central activator of genes involved in inflammation and immune function. The protein encoded by this gene can function as both a transcriptional activator or repressor depending on its dimerization partner. The p100 full-length protein is co-translationally processed into a p52 active form. Chromosomal rearrangements and translocations of this locus have been observed in B cell lymphomas, some of which may result in the formation of fusion proteins. There is a pseudogene for this gene on chromosome 18. Alternative splicing results in multiple transcript variants. [provided by RefSeq, Dec 2013],

Function : disease:A chromosomal aberration involving NFKB2 is found in a case of B-cell non Hodgkin lymphoma (B-NHL). Translocation t(10;14)(q24;q32) with IGHA1. The resulting oncogene is also called Lyt-10C alpha variant.,disease:A chromosomal aberration involving NFKB2 is found in a cutaneous T-cell leukemia (C-TCL) cell line. This rearrangement produces the p80HT gene which encodes for a truncated 80 kDa protein (p80HT).,disease:In B-cell leukemia (B-CLL) cell line, LB40 and EB308, can be found after heterogeneous chromosomal aberrations, such as internal deletions.,domain:The C-terminus of p100 might be involved in cytoplasmic retention, inhibition of DNA-binding by p52 homodimers, and/or transcription activation.,domain:The glycine-rich region (GRR) appears to be a critical element in the generation of p52.,function:NF-kappa-B is a pleiotropic transcription factor which is present in almost a

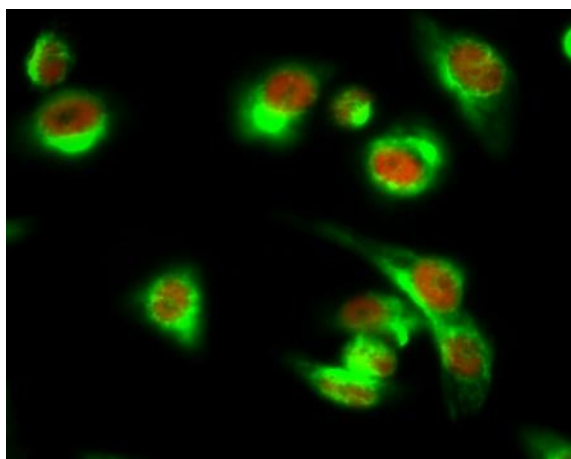
Subcellular Location : nucleus,nucleoplasm,cytoplasm,cytosol,Bcl3/NF-kappaB2 complex,

Expression : Leukemia,Lymph,Thymus,

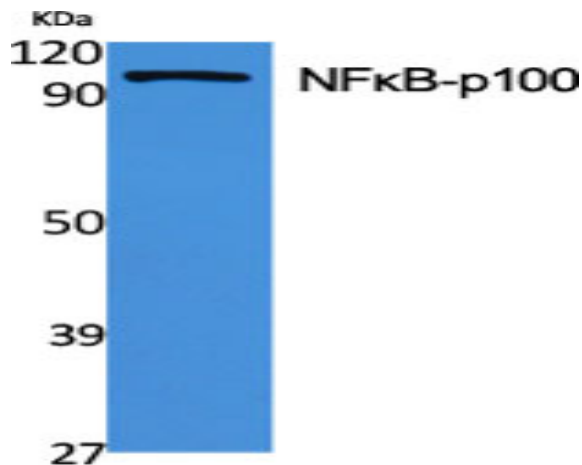
Products Images



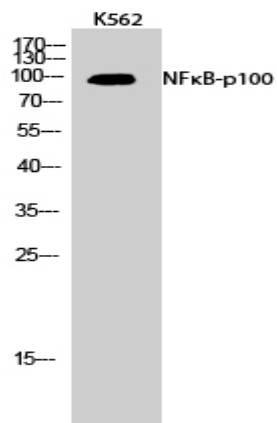
Western blot analysis of lysates from RAW264.7 cells treated with EGF 200ng/ml 30', using NF-kappaB p100 Antibody. Primary Antibody was diluted at 1:1000 4° over night, secondary antibody(Immunoway cat:RS23920)was diluted at 1:10000, 37° 1 hour.



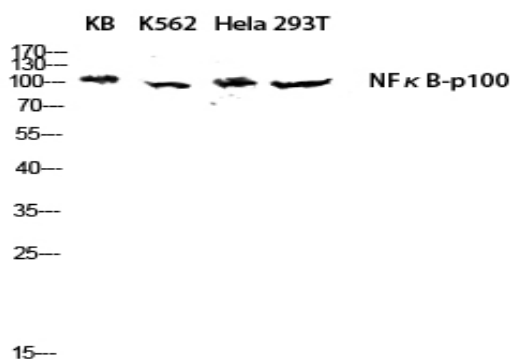
Immunofluorescence analysis of HeLa cell. 1, NFκB-p100 Polyclonal Antibody(red) was diluted at 1:200(4° overnight). ATG5 mouse Monoclonal Antibody(3C7)(green) was diluted at 1:200(4° overnight). 2, Goat Anti Rabbit Alexa Fluor 594 Catalog:RS3611 was diluted at 1:1000(room temperature, 50min). Goat Anti Mouse Alexa Fluor 488 Catalog:RS3208 was diluted at 1:1000(room temperature, 50min).



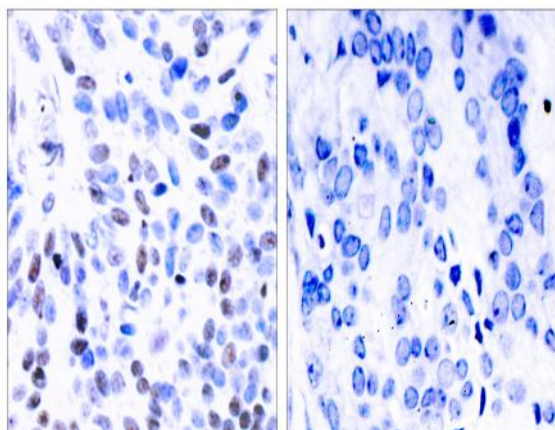
Western Blot analysis of various cells using NFκB-p100 Polyclonal Antibody diluted at 1:1000



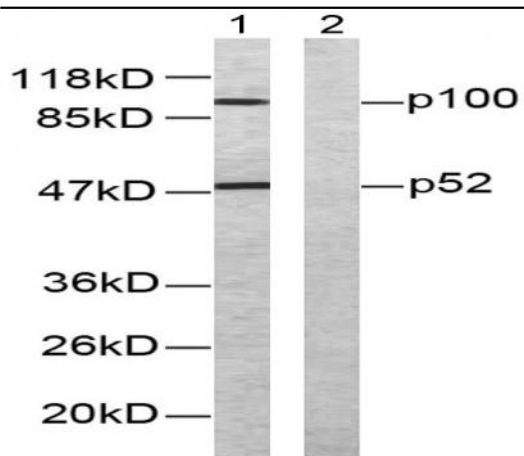
Western Blot analysis of K562 cells using NFκB-p100 Polyclonal Antibody diluted at 1:1000



Western blot analysis of KB K562 HeLa 293T lysis using NFκB-p100 antibody. Antibody was diluted at 1:1000



Immunohistochemistry analysis of paraffin-embedded human breast carcinoma tissue, using NF-kappaB p100/p52 Antibody. The picture on the right is blocked with the synthesized peptide.



Western blot analysis of lysates from ovary cancer cells, using NF-kappaB p100/p52 Antibody. The lane on the right is blocked with the synthesized peptide.