

## S100 Polyclonal Antibody

|                              |   |
|------------------------------|---|
| <b>Catalog No :</b>          | YN5481  |
| <b>Reactivity :</b>          | Human;Rat;Mouse   |
| <b>Applications :</b>        | WB;IHC;IF   |
| <b>Target :</b>              | S100  |
| <b>Gene Name :</b>           | S100A1  |
| <b>Protein Name :</b>        | Protein S100-A1 (S-100 protein alpha chain) (S-100 protein subunit alpha) (S100 calcium-binding protein A1)           |
| <b>Human Gene Id :</b>       | 6271  |
| <b>Human Swiss Prot No :</b> | P23297  |
| <b>Mouse Swiss Prot No :</b> | P56565  |
| <b>Rat Swiss Prot No :</b>   | P35467  |
| <b>Immunogen :</b>           | Recombinant Protein of S100   |
| <b>Specificity :</b>         | The antibody detects endogenous S100 protein  |
| <b>Formulation :</b>         | Liquid in PBS containing 50% glycerol, 0.5% BSA and 0.02% sodium azide.   |
| <b>Source :</b>              | Polyclonal, Rabbit,IgG  |
| <b>Dilution :</b>            | WB 1:500 - 1:2000. IHC 1:100 - 1:300. ELISA: 1:40000.. IF 1:50-200  |
| <b>Purification :</b>        | The antibody was affinity-purified from rabbit antiserum by affinity-chromatography using epitope-specific immunogen. |
| <b>Concentration :</b>       | 1 mg/ml   |
| <b>Storage Stability :</b>   | -15°C to -25°C/1 year(Do not lower than -25°C)  |

**Observed Band :** 15kD

**Background :**

S100 calcium binding protein A1 (S100A1) Homo sapiens The protein encoded by this gene is a member of the S100 family of proteins containing 2 EF-hand calcium-binding motifs. S100 proteins are localized in the cytoplasm and/or nucleus of a wide range of cells, and involved in the regulation of a number of cellular processes such as cell cycle progression and differentiation. S100 genes include at least 13 members which are located as a cluster on chromosome 1q21. This protein may function in stimulation of Ca<sup>2+</sup>-induced Ca<sup>2+</sup> release, inhibition of microtubule assembly, and inhibition of protein kinase C-mediated phosphorylation. Reduced expression of this protein has been implicated in cardiomyopathies. [provided by RefSeq, Jul 2008],

**Function :**

function:Weakly binds calcium but binds zinc very tightly-distinct binding sites with different affinities exist for both ions on each monomer. Physiological concentrations of potassium ion antagonize the binding of both divalent cations, especially affecting high-affinity calcium-binding sites.,similarity:Belongs to the S-100 family.,similarity:Contains 2 EF-hand domains.,subunit:Dimer of either two alpha chains, or two beta chains, or one alpha and one beta chain.,tissue specificity:Highly prevalent in heart. Also found in lesser quantities in skeletal muscle and brain.,

**Subcellular**

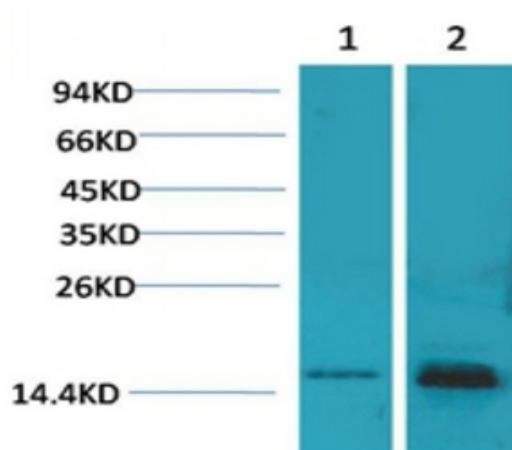
Cytoplasm . Sarcoplasmic reticulum . Mitochondrion .

**Location :**

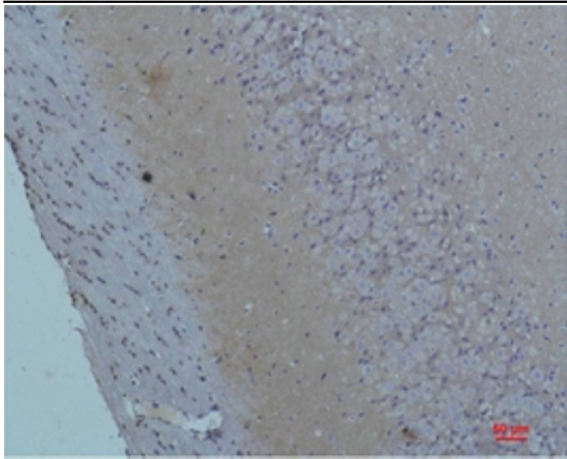
**Expression :**

Highly prevalent in heart (PubMed:12804600, PubMed:1384693). Also found in lesser quantities in skeletal muscle and brain (PubMed:1384693).

## Products Images



Western blot analysis of 1) 293T, 2) Mouse Brain Tissue with S100 Rabbit pAb diluted at 1:2,000.



Immunohistochemical analysis of paraffin-embedded Rat Brain Tissue using S100Rabbit pAb diluted at 1:200.