

## β II Tubulin Polyclonal Antibody

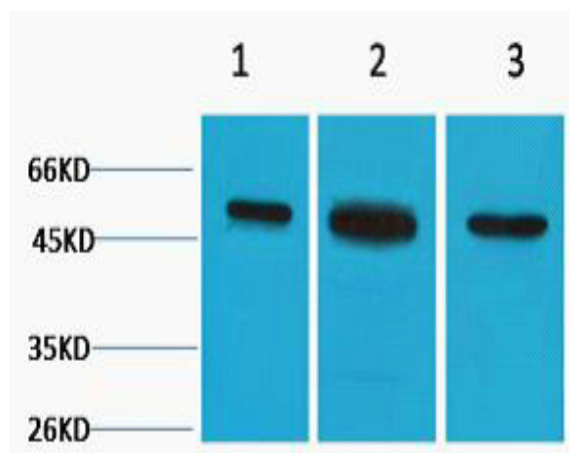
<b>Catalog No :</b>	YN5436
<b>Reactivity :</b>	Human;Mouse;Rat
<b>Applications :</b>	WB;IF
<b>Target :</b>	Tubulin β II
<b>Fields :</b>	>>Phagosome;>>Gap junction;>>Alzheimer disease;>>Parkinson disease;>>Amyotrophic lateral sclerosis;>>Huntington disease;>>Prion disease;>>Pathways of neurodegeneration - multiple diseases;>>Pathogenic Escherichia coli infection;>>Salmonella infection
<b>Gene Name :</b>	TUBB2A
<b>Protein Name :</b>	Tubulin beta-2A chain
<b>Human Gene Id :</b>	7280
<b>Human Swiss Prot No :</b>	Q13885
<b>Mouse Gene Id :</b>	22151
<b>Mouse Swiss Prot No :</b>	Q7TMM9
<b>Rat Gene Id :</b>	498736
<b>Rat Swiss Prot No :</b>	P85108
<b>Immunogen :</b>	Synthetic Peptide of β II Tubulin AA range: 80-130
<b>Specificity :</b>	The antibody detects endogenous β II tubulin protein.
<b>Formulation :</b>	PBS, pH 7.4, containing 0.5%BSA, 0.02% sodium azide as Preservative and 50% Glycerol.
<b>Source :</b>	Polyclonal, Rabbit,IgG

---

<b>Dilution :</b>	WB 1:500-2000; IF ICC 1:100-500
<b>Purification :</b>	The antibody was affinity-purified from rabbit antiserum by affinity-chromatography using epitope-specific immunogen.
<b>Storage Stability :</b>	-15°C to -25°C/1 year(Do not lower than -25°C)
<b>Observed Band :</b>	50kD
<b>Cell Pathway :</b>	Gap junction;Pathogenic Escherichia coli infection;
<b>Background :</b>	Microtubules, key participants in processes such as mitosis and intracellular transport, are composed of heterodimers of alpha- and beta-tubulins. The protein encoded by this gene is a beta-tubulin. Defects in this gene are associated with complex cortical dysplasia with other brain malformations-5. Two transcript variants encoding distinct isoforms have been found for this gene. [provided by RefSeq, Jul 2015],
<b>Function :</b>	function:Tubulin is the major constituent of microtubules. It binds two moles of GTP, one at an exchangeable site on the beta chain and one at a non-exchangeable site on the alpha-chain.,similarity:Belongs to the tubulin family.,subunit:Dimer of alpha and beta chains.,
<b>Subcellular Location :</b>	Cytoplasm, cytoskeleton .
<b>Expression :</b>	High expression in brain, where it represents 30% of all beta-tubulins.

---

## Products Images



Western blot analysis of 1) Hela, 2) 3T3, 3) Rat Kidney tissue, diluted at 1:3000. Secondary antibody(catalog#:RS0002) was diluted at 1:20000